

Anti-Phospho-Rb (T826) Rabbit Polyclonal Antibody



Catalog #: U1365

Aliases

RB1; Retinoblastoma-associated protein; p105-Rb; pRb; Rb; pp110

Background

Gene Name: RB1

NCBI Gene Entry: [5925](#)

UniProt Entry: [P06400](#)

Application Information

Molecular Weight: Predicted, 106 kDa; observed, 110 kDa

Clonality: Rabbit polyclonal antibody

Species Reactivity: Human, mouse, rat

Applications Tested: Western blotting (WB), immunohistochemistry (IHC), immunocytochemistry (IC)

Immunogen

A synthesized peptide derived from human Phospho-Rb (Thr826)

Isotype

Rabbit IgG

Storage Buffer

Supplied in PBS containing 50% glycerol, 0.5% BSA and 0.02% sodium azide.

Storage

Store at -20 °C for one year.

Recommended Dilutions

Western Blotting (WB): 1:500-1:2,000

Immunohistochemistry (IHC): 1:100-1:300

Immunocytochemistry (IC): 1:200-1:1,000

Note: This product is for research use only.

Validation Data

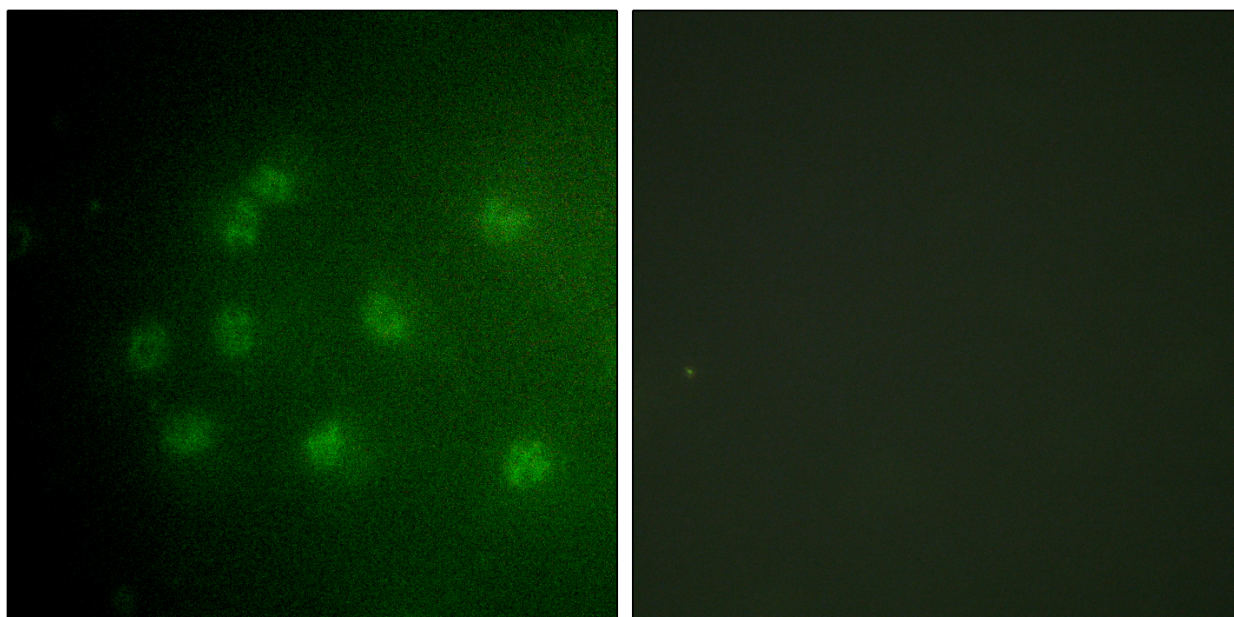
SUPPORT

SUPPORT@GENUINBIOTECH.COM
TEL: +1-540-855-7041

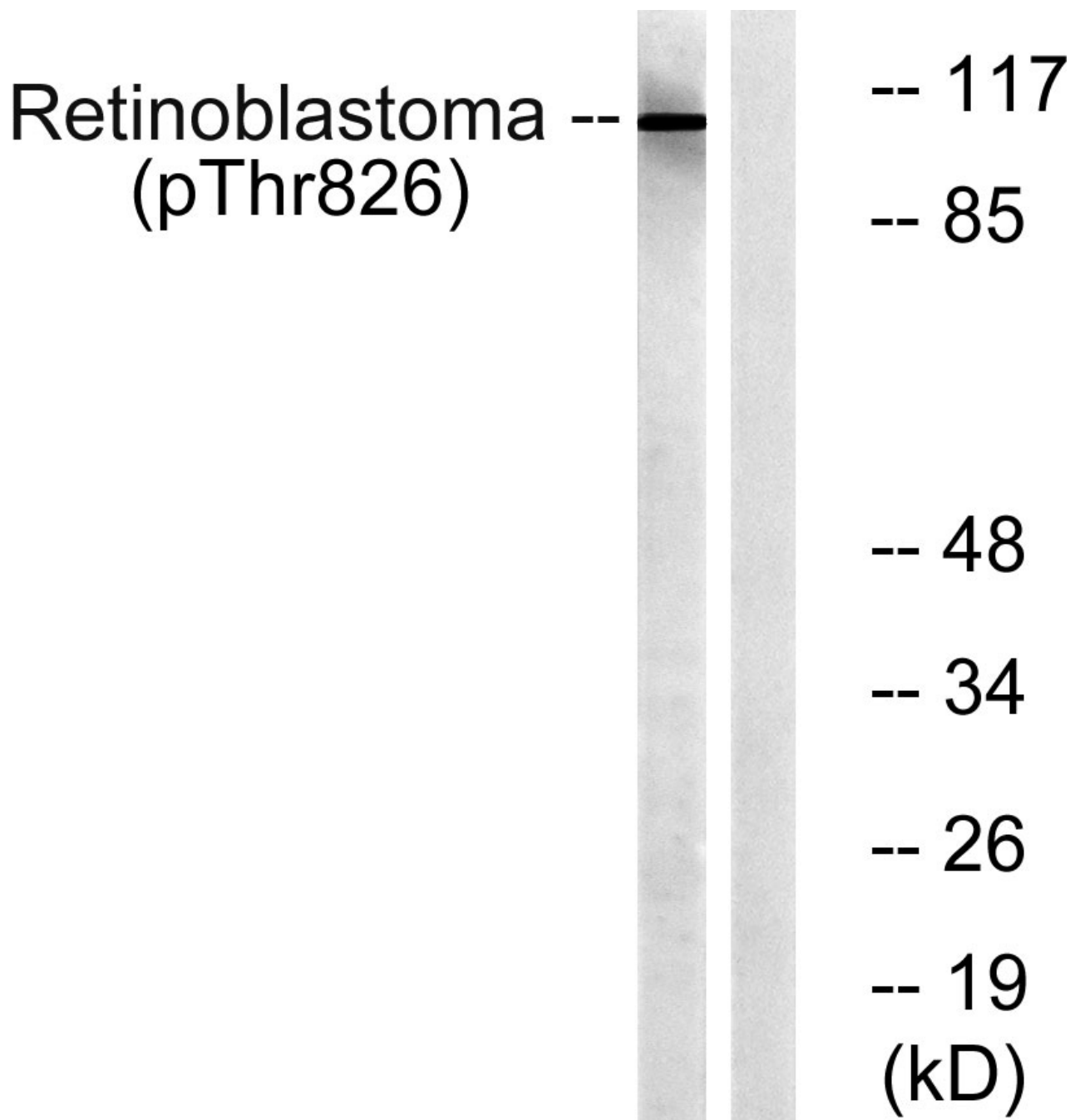
ORDERS

SALES@GENUINBIOTECH.COM
FAX: +1-540-855-7041

WWW.GENUINBIOTECH.COM



Immunofluorescence analysis of COS7 cells, using Retinoblastoma (Phospho-Thr826) Antibody.
The picture on the right is blocked with the phospho peptide.



Western blotting analysis of lysates from HepG2 cells treated with nocodazole 1ug/ml 16h, using Retinoblastoma (Phospho-Thr826) Antibody. The lane on the right is blocked with the phospho peptide.