

Anti-Phospho-ATP1A1 (S23) Rabbit Polyclonal Antibody



Catalog #: U1372

Aliases

ATP1A1; Sodium/potassium-transporting ATPase subunit alpha-1; Na(+)/K(+) ATPase alpha-1 subunit; Sodium pump subunit alpha-1

Background

Gene Name: ATP1A1

NCBI Gene Entry: [476](#)

UniProt Entry: [P05023](#)

Application Information

Molecular Weight: Predicted, 113 kDa; observed, 113 kDa

Clonality: Rabbit polyclonal antibody

Species Reactivity: Rat

Applications Tested: Western blotting (WB), immunocytochemistry (IC)

Immunogen

A synthesized peptide derived from human Phospho-Na⁺/K⁺-ATPase α1 (Ser23)

Isotype

Rabbit IgG

Storage Buffer

Supplied in PBS containing 50% glycerol, 0.5% BSA and 0.02% sodium azide.

Storage

Store at -20 °C for one year.

Recommended Dilutions

Western Blotting (WB): 1:500-1:2,000

Immunocytochemistry (IC): 1:100-1:300

Note: This product is for research use only.

Validation Data

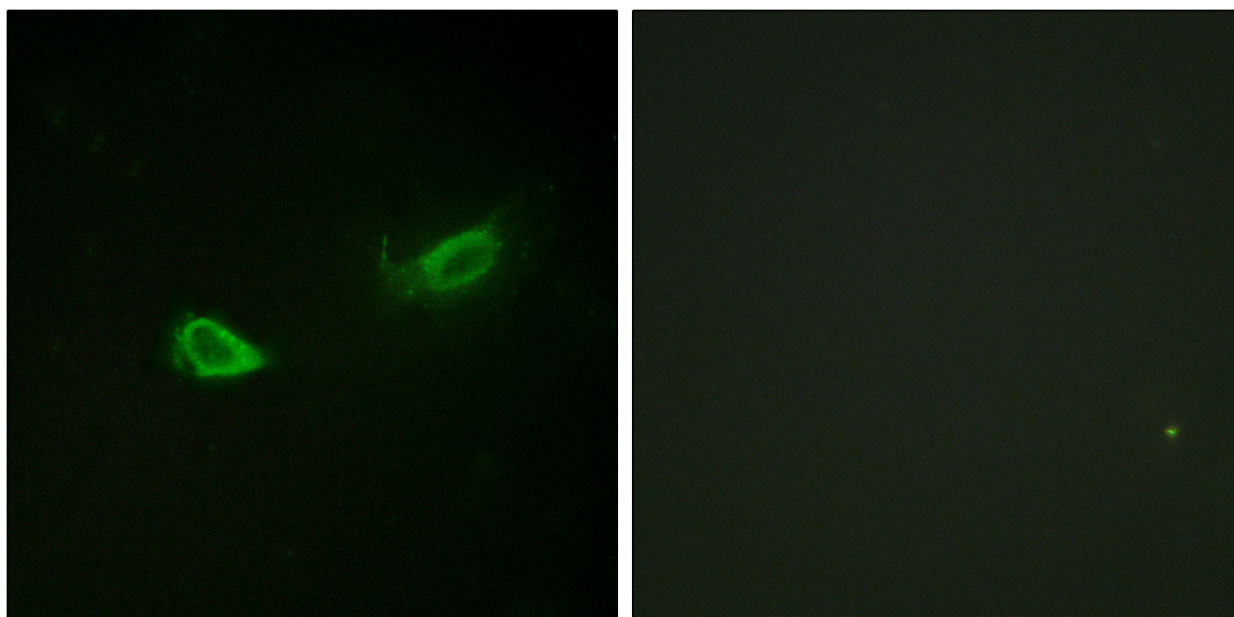
SUPPORT

SUPPORT@GENUINBIOTECH.COM
TEL: +1-540-855-7041

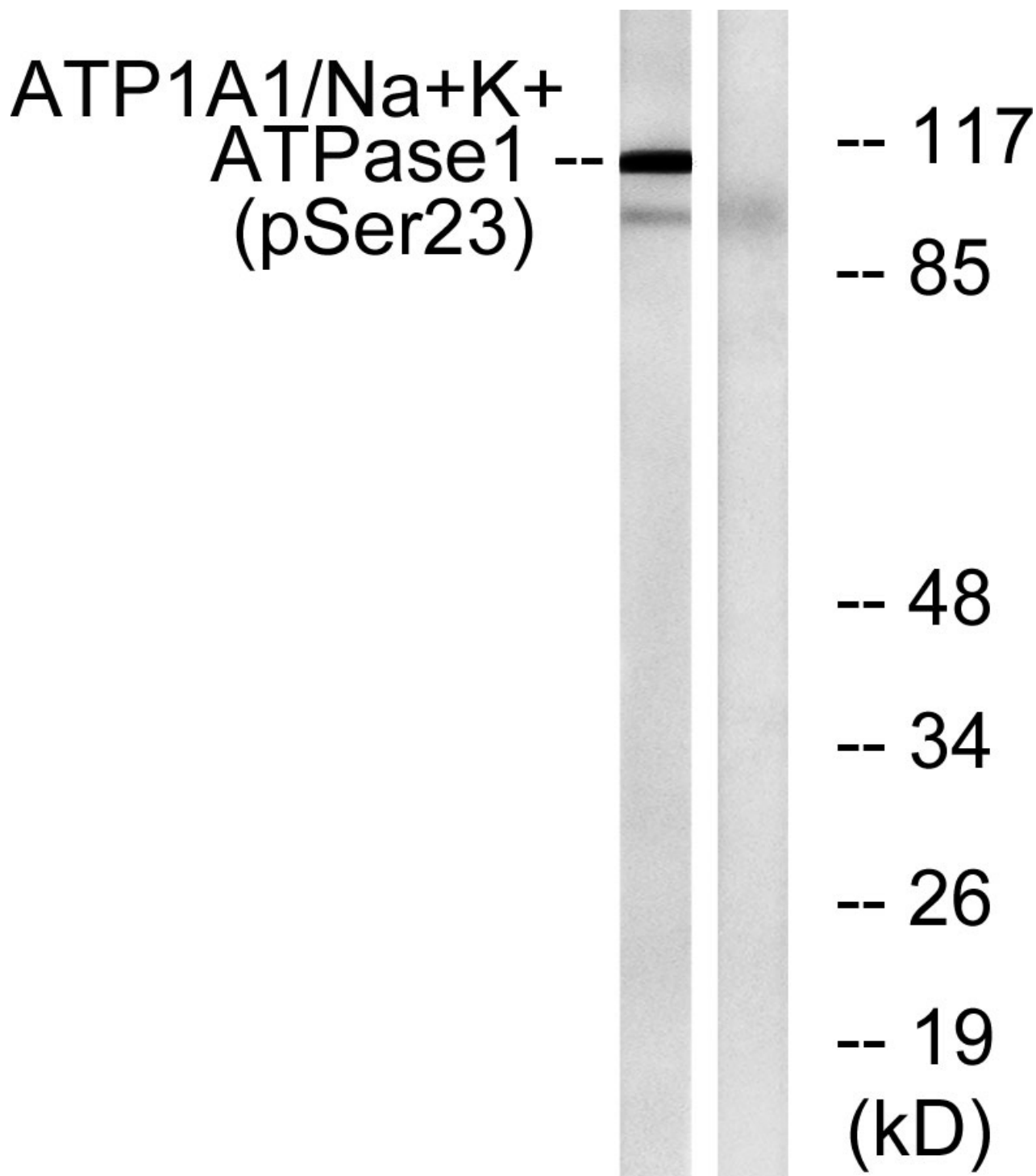
ORDERS

SALES@GENUINBIOTECH.COM
FAX: +1-540-855-7041

WWW.GENUINBIOTECH.COM



Immunofluorescence analysis of NIH/3T3 cells, using ATP1 alpha1/Na⁺K⁺ ATPase1 (Phospho-Ser23) Antibody. The picture on the right is blocked with the phospho peptide.



Western blotting analysis of lysates from rat brain, using ATP1 alpha1/Na⁺K⁺ ATPase1 (Phospho-Ser23) Antibody. The lane on the right is blocked with the phospho peptide.