

Anti-Phospho-Tyrosine Hydroxylase (S62) Rabbit Polyclonal Antibody



Catalog #: U1393

Aliases

TH; TYH; Tyrosine 3-monooxygenase; Tyrosine 3-hydroxylase; TH

Background

Gene Name: TH

NCBI Gene Entry: [7054](#)

UniProt Entry: [P07101](#)

Application Information

Molecular Weight: Predicted, 59 kDa; observed, 60 kDa

Clonality: Rabbit polyclonal antibody

Species Reactivity: Human, mouse, rat, monkey

Applications Tested: Western blotting (WB), immunohistochemistry (IHC), immunocytochemistry (IC)

Immunogen

A synthesized peptide derived from human Phospho-TH (Ser62)

Isotype

Rabbit IgG

Storage Buffer

Supplied in PBS containing 50% glycerol, 0.5% BSA and 0.02% sodium azide.

Storage

Store at -20 °C for one year.

Recommended Dilutions

Western Blotting (WB): 1:500-1:2,000

Immunohistochemistry (IHC): 1:100-1:300

Immunocytochemistry (IC): 1:50-1:200

Note: This product is for research use only.

Validation Data

SUPPORT

SUPPORT@GENUINBIOTECH.COM
TEL: +1-540-855-7041

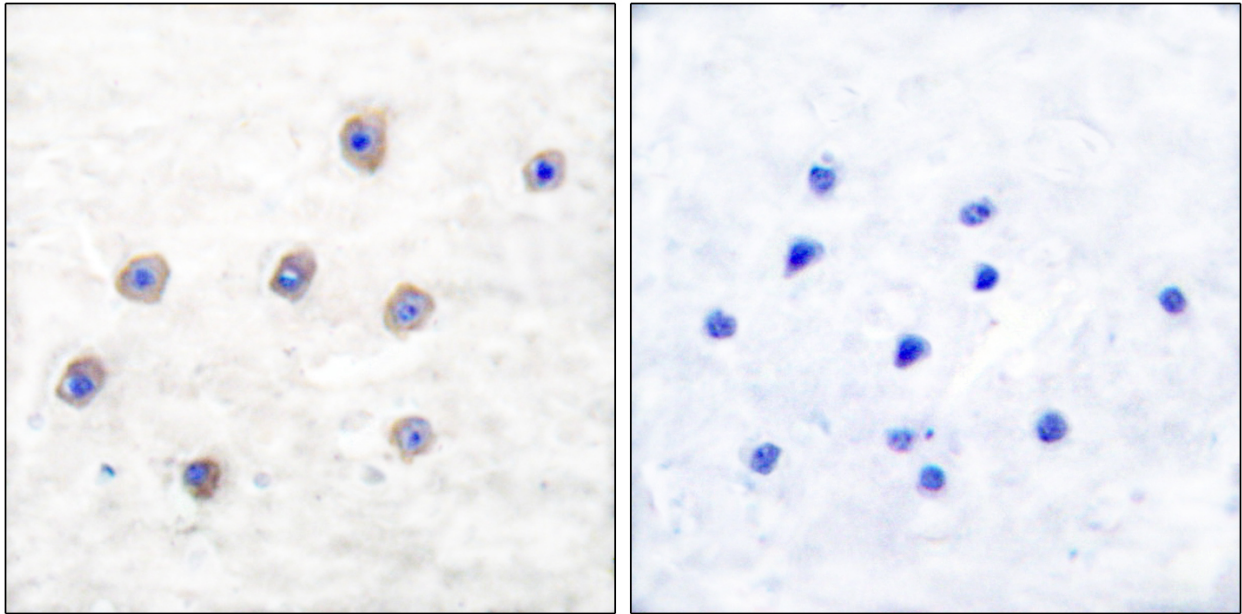
ORDERS

SALES@GENUINBIOTECH.COM
FAX: +1-540-855-7041

WWW.GENUINBIOTECH.COM

Anti-Phospho-Tyrosine Hydroxylase (S62) Rabbit Polyclonal Antibody

PAGE 2



Immunohistochemistry analysis of paraffin-embedded human brain, using Tyrosine Hydroxylase (Phospho-Ser31) Antibody. The picture on the right is blocked with the phospho peptide.

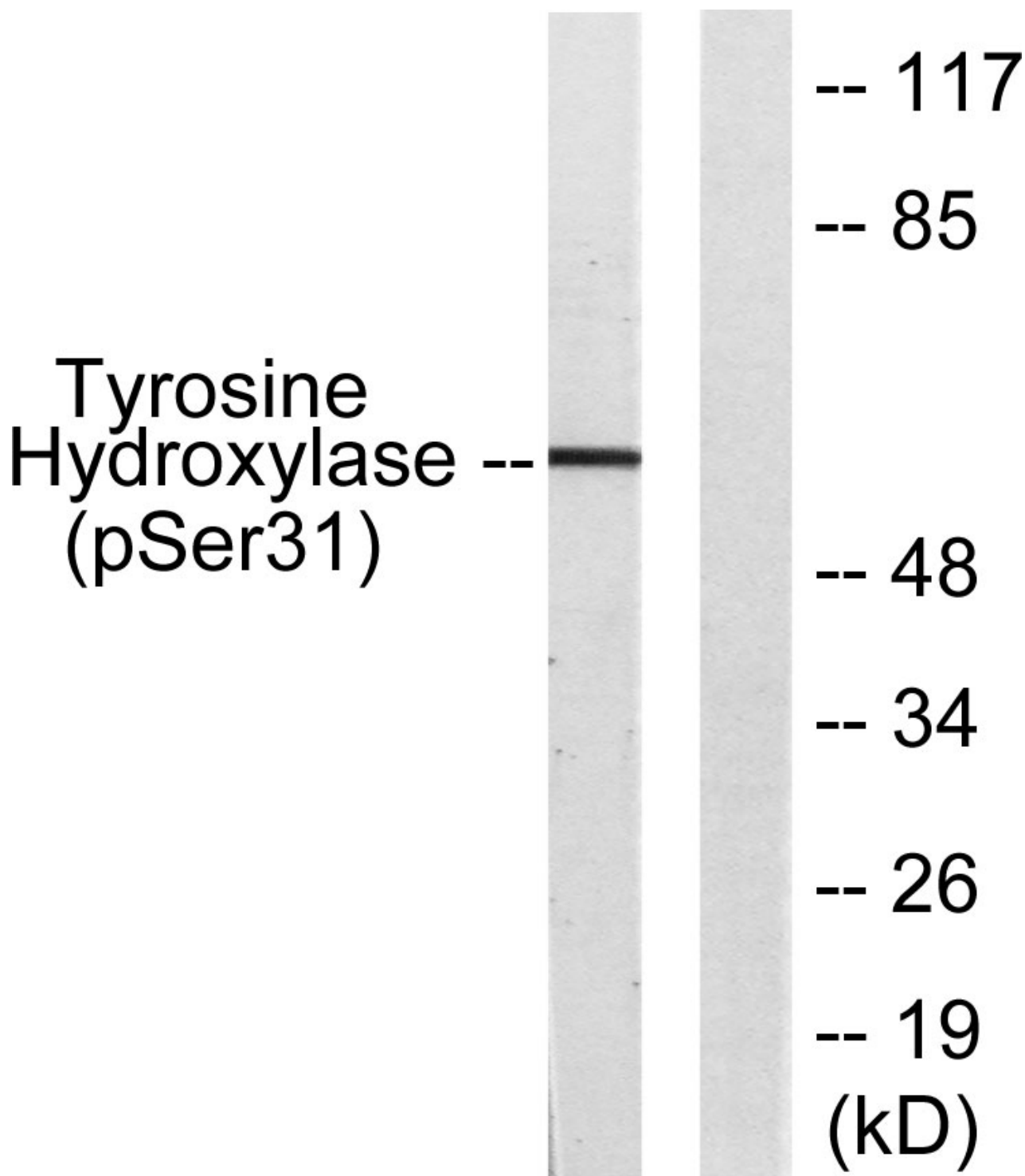
SUPPORT

SUPPORT@GENUINBIOTECH.COM
TEL: +1-540-855-7041

ORDERS

SALES@GENUINBIOTECH.COM
FAX: +1-540-855-7041

WWW.GENUINBIOTECH.COM



Western blotting analysis of lysates from 293 cells treated with UV 15', using Tyrosine Hydroxylase (Phospho-Ser31) Antibody. The lane on the right is blocked with the phospho peptide.