

Anti-Phospho-ALK (Y1507) Rabbit Polyclonal Antibody



Catalog #: U1471

Aliases

ALK; ALK tyrosine kinase receptor; Anaplastic lymphoma kinase; CD antigen CD246

Background

Gene Name: ALK

NCBI Gene Entry: [238](#)

UniProt Entry: [Q9UM73](#)

Application Information

Molecular Weight: Predicted, 176 kDa; observed, 150-240 kDa

Clonality: Rabbit polyclonal antibody

Species Reactivity: Human, mouse, monkey

Applications Tested: Western blotting (WB), immunohistochemistry (IHC), immunocytochemistry (IC)

Immunogen

A synthesized peptide derived from human Phospho-ALK (Tyr1507)

Isotype

Rabbit IgG

Storage Buffer

Supplied in PBS containing 50% glycerol, 0.5% BSA and 0.02% sodium azide.

Storage

Store at -20 °C for one year.

Recommended Dilutions

Western Blotting (WB): 1:500-1:2,000

Immunohistochemistry (IHC): 1:100-1:300

Immunocytochemistry (IC): 1:50-1:200

Note: This product is for research use only.

Validation Data

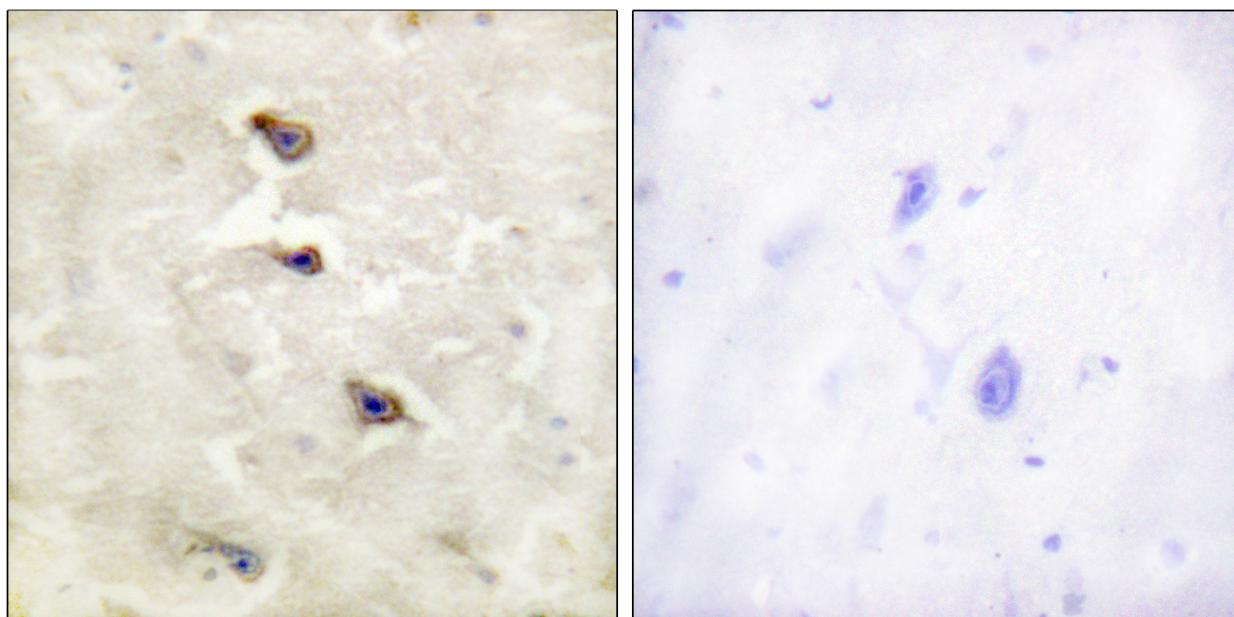
SUPPORT

SUPPORT@GENUINBIOTECH.COM
TEL: +1-540-855-7041

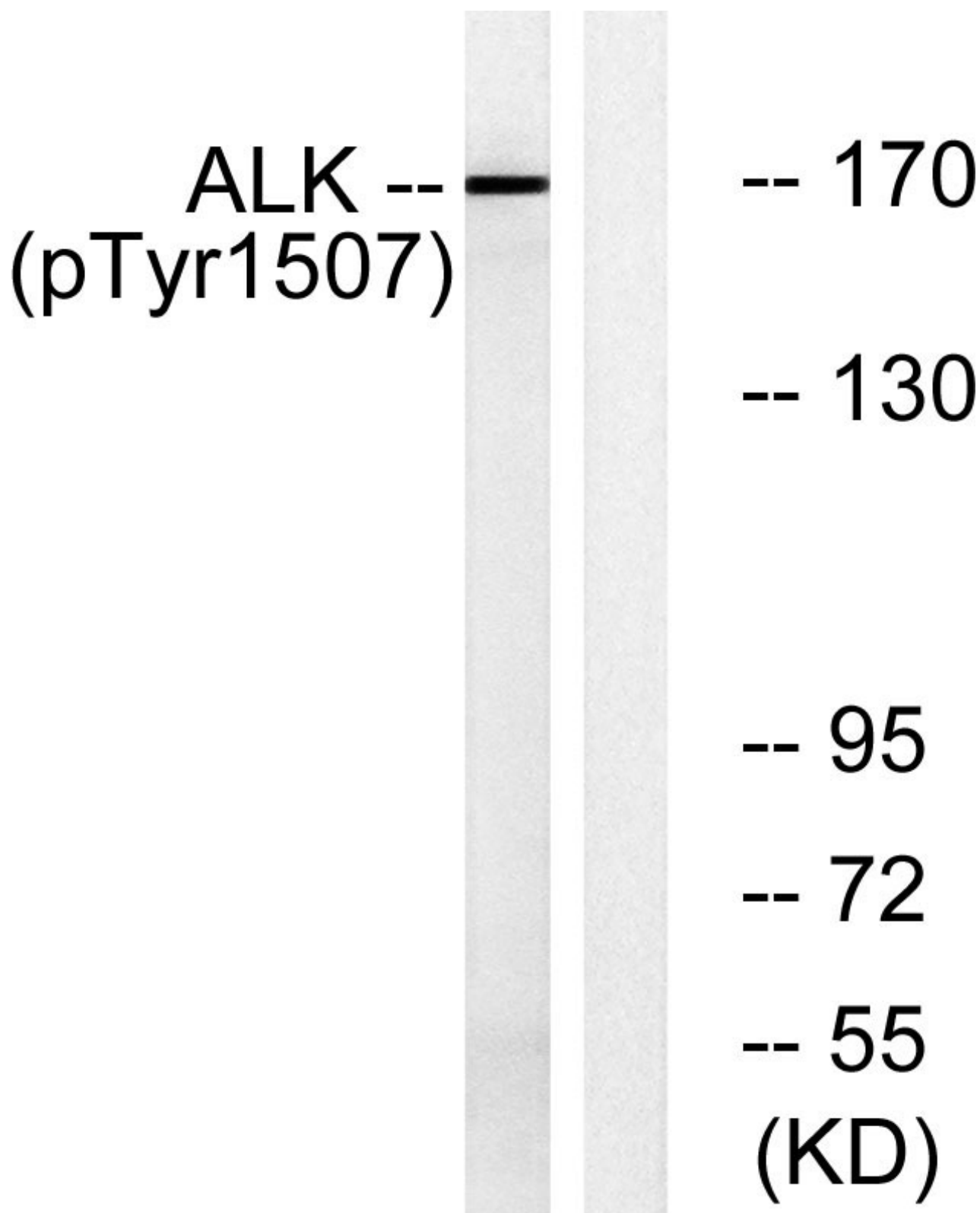
ORDERS

SALES@GENUINBIOTECH.COM
FAX: +1-540-855-7041

WWW.GENUINBIOTECH.COM



Immunohistochemistry analysis of paraffin-embedded human brain, using ALK (Phospho-Tyr1507) Antibody. The picture on the right is blocked with the phospho peptide.



Western blotting analysis of lysates from COS7 cells treated with anisomycin 25ug/ml 30', using ALK (Phospho-Tyr1507) Antibody. The lane on the right is blocked with the phospho peptide.

SUPPORT

SUPPORT@GENUINBIOTECH.COM
TEL: +1-540-855-7041

ORDERS

SALES@GENUINBIOTECH.COM
FAX: +1-540-855-7041

WWW.GENUINBIOTECH.COM