

Anti-Phospho-p130 Cas (Y165) Rabbit Polyclonal Antibody



Catalog #: U1480

Aliases

BCAR1; CAS; CASS1; CRKAS; Breast cancer anti-estrogen resistance protein 1; CRK-associated substrate; Cas scaffolding protein family member 1; p130cas

Background

Gene Name: BCAR1

NCBI Gene Entry: [9564](#)

UniProt Entry: [P56945](#)

Application Information

Molecular Weight: Predicted, 93 kDa; observed, 130 kDa

Clonality: Rabbit polyclonal antibody

Species Reactivity: Human, mouse, rat

Applications Tested: Western blotting (WB), immunohistochemistry (IHC), immunocytochemistry (IC)

Immunogen

A synthesized peptide derived from human Phospho-p130 Cas (Tyr165)

Isotype

Rabbit IgG

Storage Buffer

Supplied in PBS containing 50% glycerol, 0.5% BSA and 0.02% sodium azide.

Storage

Store at -20 °C for one year.

Recommended Dilutions

Western Blotting (WB): 1:500-1:2,000

Immunohistochemistry (IHC): 1:100-1:300

Immunocytochemistry (IC): 1:50-1:200

Note: This product is for research use only.

Validation Data

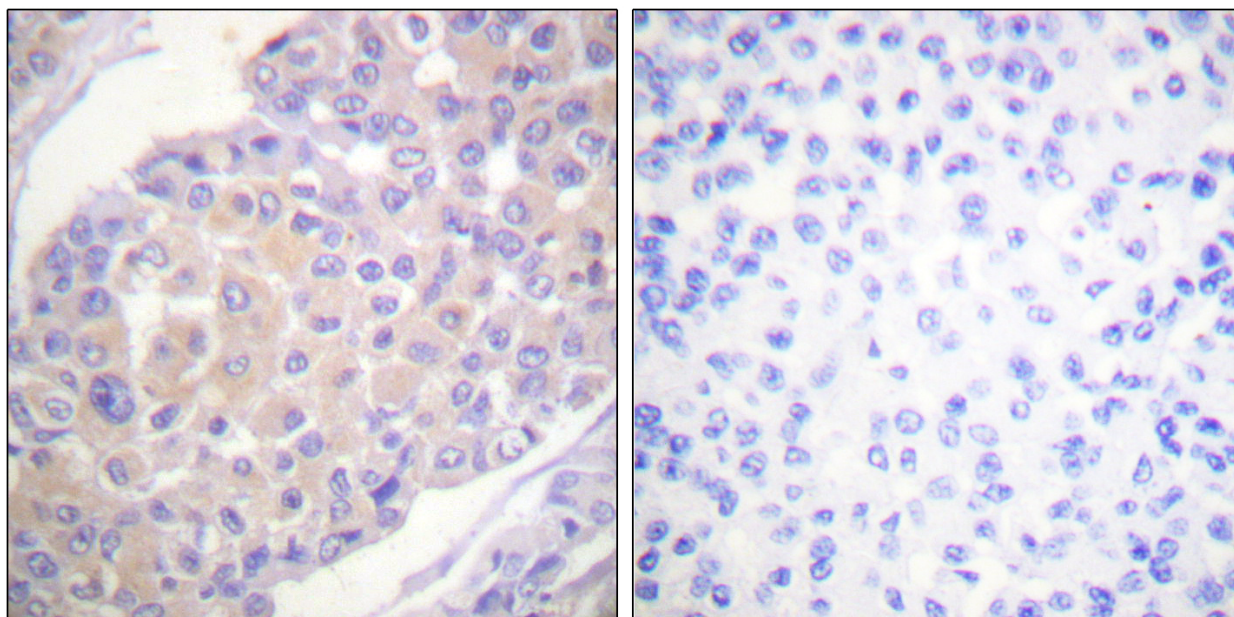
SUPPORT

SUPPORT@GENUINBIOTECH.COM
TEL: +1-540-855-7041

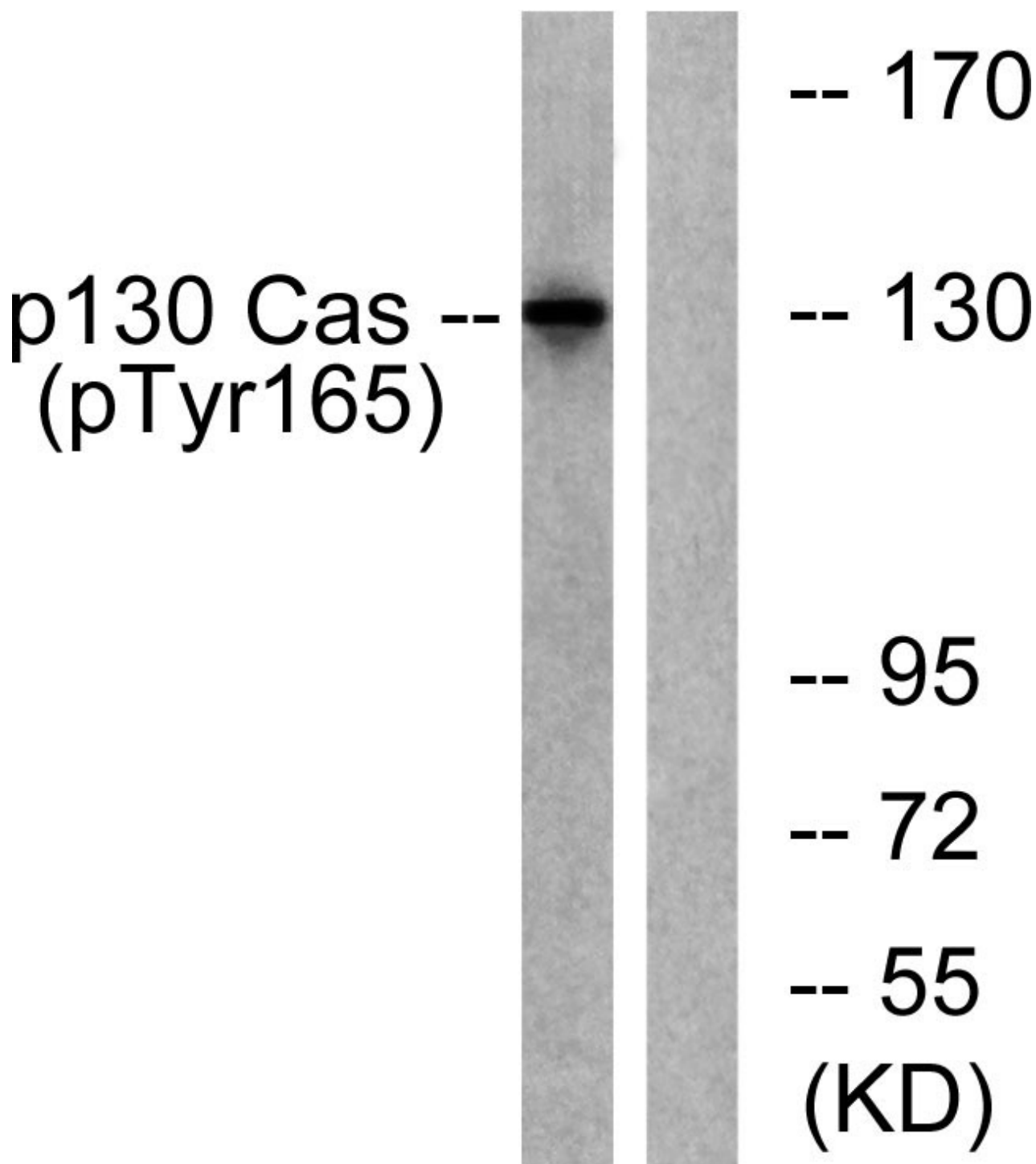
ORDERS

SALES@GENUINBIOTECH.COM
FAX: +1-540-855-7041

WWW.GENUINBIOTECH.COM



Immunohistochemistry analysis of paraffin-embedded human breast carcinoma, using p130 Cas (Phospho-Tyr165) Antibody. The picture on the right is blocked with the phospho peptide.



Western blotting analysis of lysates from HepG2 cells treated with EGF 200ng/ml 30', using p130 Cas (Phospho-Tyr165) Antibody. The lane on the right is blocked with the phospho peptide.