

Anti-Phospho-5-LO (S272) Rabbit Polyclonal Antibody



Catalog #: U1493

Aliases

ALOX5; LOG5; Arachidonate 5-lipoxygenase; 5-LO; 5-lipoxygenase

Background

Gene Name: ALOX5

NCBI Gene Entry: [240](#)

UniProt Entry: [P09917](#)

Application Information

Molecular Weight: Predicted, 78 kDa; observed, 78 kDa

Clonality: Rabbit polyclonal antibody

Species Reactivity: Human, mouse, rat

Applications Tested: Western blotting (WB), immunohistochemistry (IHC), immunocytochemistry (IC)

Immunogen

A synthesized peptide derived from human Phospho-5-LO (Ser272)

Isotype

Rabbit IgG

Storage Buffer

Supplied in PBS containing 50% glycerol, 0.5% BSA and 0.02% sodium azide.

Storage

Store at -20 °C for one year.

Recommended Dilutions

Western Blotting (WB): 1:500-1:2,000

Immunohistochemistry (IHC): 1:100-1:300

Immunocytochemistry (IC): 1:50-1:200

Note: This product is for research use only.

Validation Data

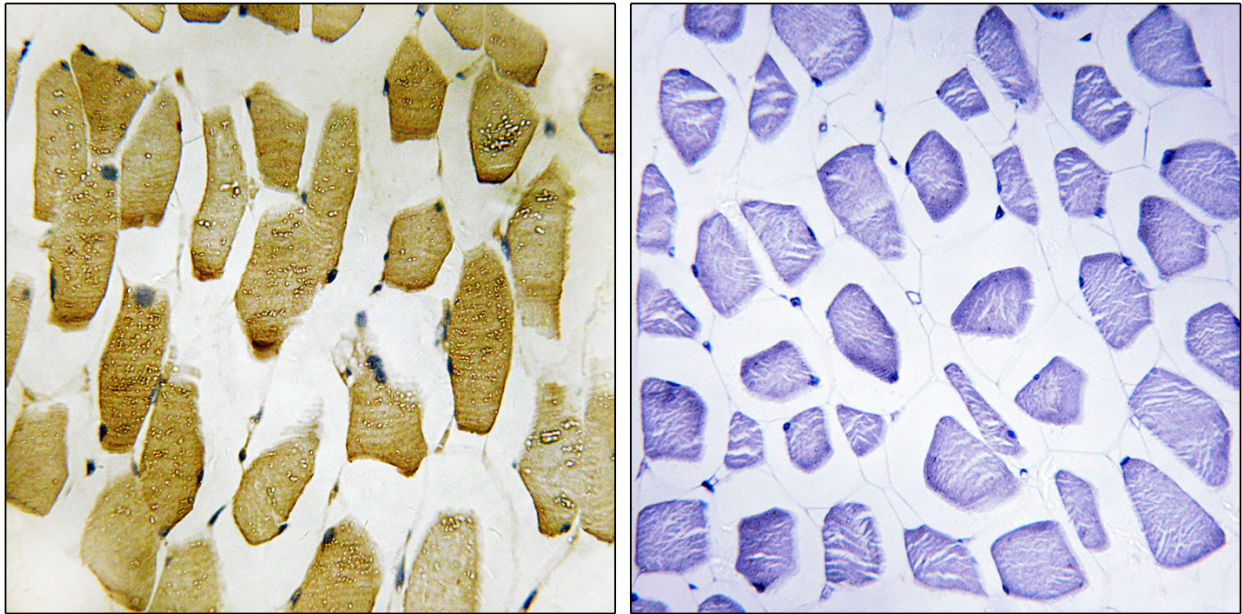
SUPPORT

SUPPORT@GENUINBIOTECH.COM
TEL: +1-540-855-7041

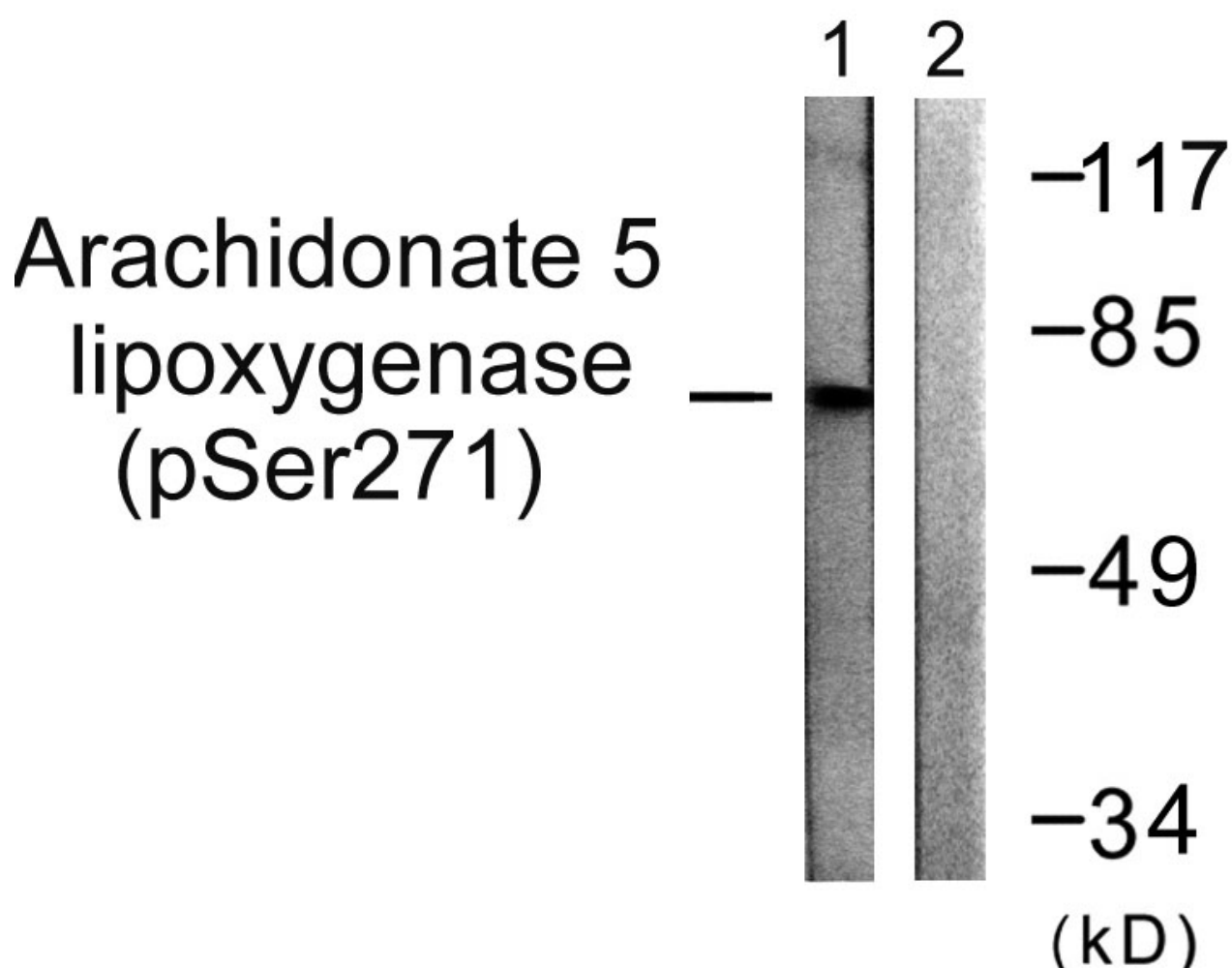
ORDERS

SALES@GENUINBIOTECH.COM
FAX: +1-540-855-7041

WWW.GENUINBIOTECH.COM



Immunohistochemistry analysis of paraffin-embedded human skeletal muscle, using Arachidonate 5 Lipoxygenase (Phospho-Ser271) Antibody. The picture on the right is blocked with the phosphopeptide.



Western blotting analysis of lysates from HUVEC cells, using Arachidonate 5 Lipxygenase (Phospho-Ser271) Antibody. The lane on the right is blocked with the phospho peptide.