

Anti-Phospho-GluR4 (S862) Rabbit Polyclonal Antibody



Catalog #: U1516

Aliases

GRIA4; GLUR4; Glutamate receptor 4; GluR-4; GluR4; AMPA-selective glutamate receptor 4; GluR-D; Glutamate receptor ionotropic; AMPA 4; GluA4

Background

Gene Name: GRIA4

NCBI Gene Entry: [2893](#)

UniProt Entry: [P48058](#)

Application Information

Molecular Weight: Predicted, 101 kDa; observed, 100 kDa

Clonality: Rabbit polyclonal antibody

Species Reactivity: Human, mouse, rat

Applications Tested: Western blotting (WB), immunohistochemistry (IHC), immunocytochemistry (IC)

Immunogen

A synthesized peptide derived from human Phospho-GluR4 (Ser862)

Isotype

Rabbit IgG

Storage Buffer

Supplied in PBS containing 50% glycerol, 0.5% BSA and 0.02% sodium azide.

Storage

Store at -20 °C for one year.

Recommended Dilutions

Western Blotting (WB): 1:500-1:2,000

Immunohistochemistry (IHC): 1:100-1:300

Immunocytochemistry (IC): 1:50-1:200

Note: This product is for research use only.

Validation Data

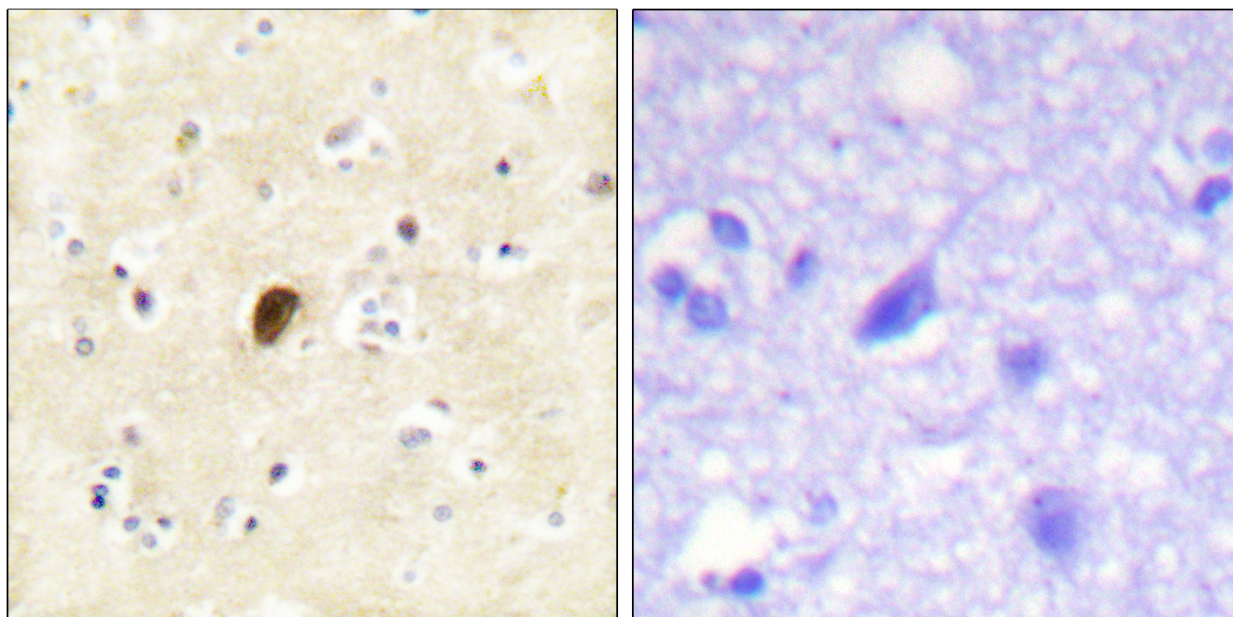
SUPPORT

SUPPORT@GENUINBIOTECH.COM
TEL: +1-540-855-7041

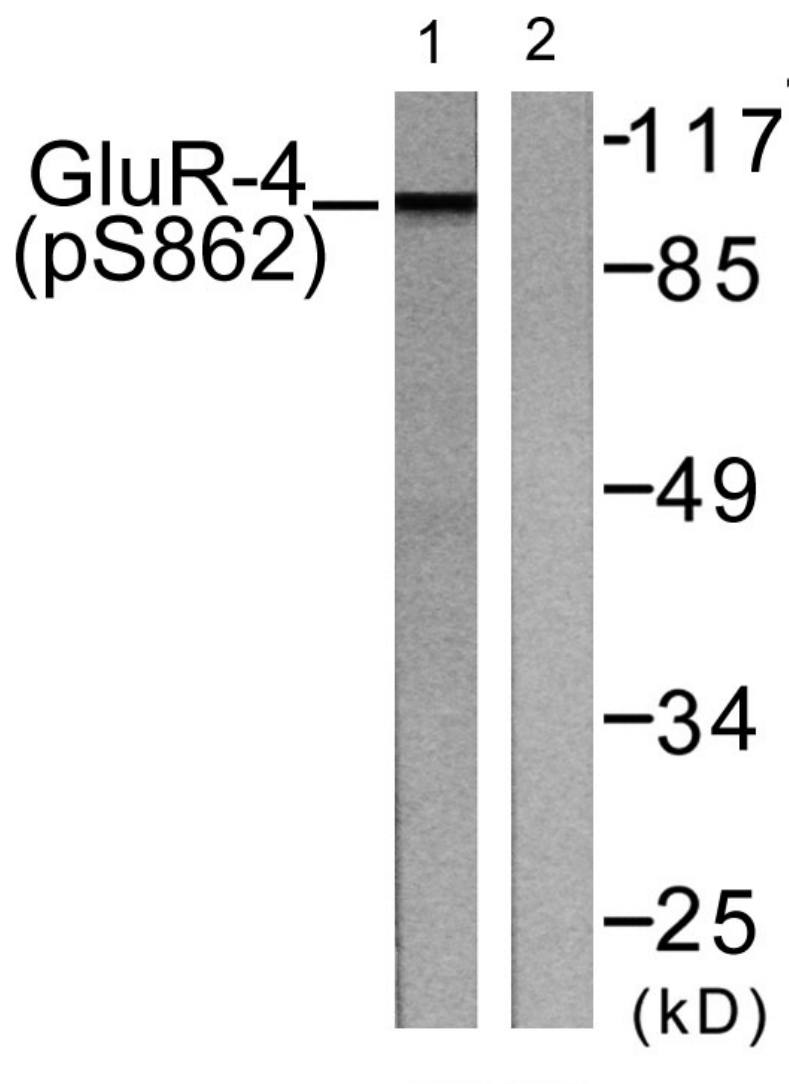
ORDERS

SALES@GENUINBIOTECH.COM
FAX: +1-540-855-7041

WWW.GENUINBIOTECH.COM



Immunohistochemistry analysis of paraffin-embedded human brain, using GluR4 (Phospho-Ser862) Antibody. The picture on the right is blocked with the phospho peptide.



Western blotting analysis of lysates from HepG2 cells treated with Forskolin 40nM 30', using GluR4 (Phospho-Ser862) Antibody. The lane on the right is blocked with the phospho peptide.