

Anti-Phospho-IGF-IIR (S2409) Rabbit Polyclonal Antibody



Catalog #: U1539

Aliases

IGF2R; MPRI; Cation-independent mannose-6-phosphate receptor; CI Man-6-P receptor; CI-MPR; M6PR; 300 kDa mannose 6-phosphate receptor; MPR 300; Insulin-like growth factor 2 receptor; Insulin-like growth factor II receptor; IGF-II receptor;

Background

Gene Name: IGF2R

NCBI Gene Entry: [3482](#)

UniProt Entry: [P11717](#)

Application Information

Molecular Weight: Predicted, 274 kDa; observed, 300 kDa

Clonality: Rabbit polyclonal antibody

Species Reactivity: Human, mouse, monkey

Applications Tested: Western blotting (WB), immunohistochemistry (IHC), immunocytochemistry (IC)

Immunogen

A synthesized peptide derived from human Phospho-IGF-IIR (Ser2409)

Isotype

Rabbit IgG

Storage Buffer

Supplied in PBS containing 50% glycerol, 0.5% BSA and 0.02% sodium azide.

Storage

Store at -20 °C for one year.

Recommended Dilutions

Western Blotting (WB): 1:500-1:2,000

Immunohistochemistry (IHC): 1:100-1:300

Immunocytochemistry (IC): 1:50-1:200

Note: This product is for research use only.

SUPPORT

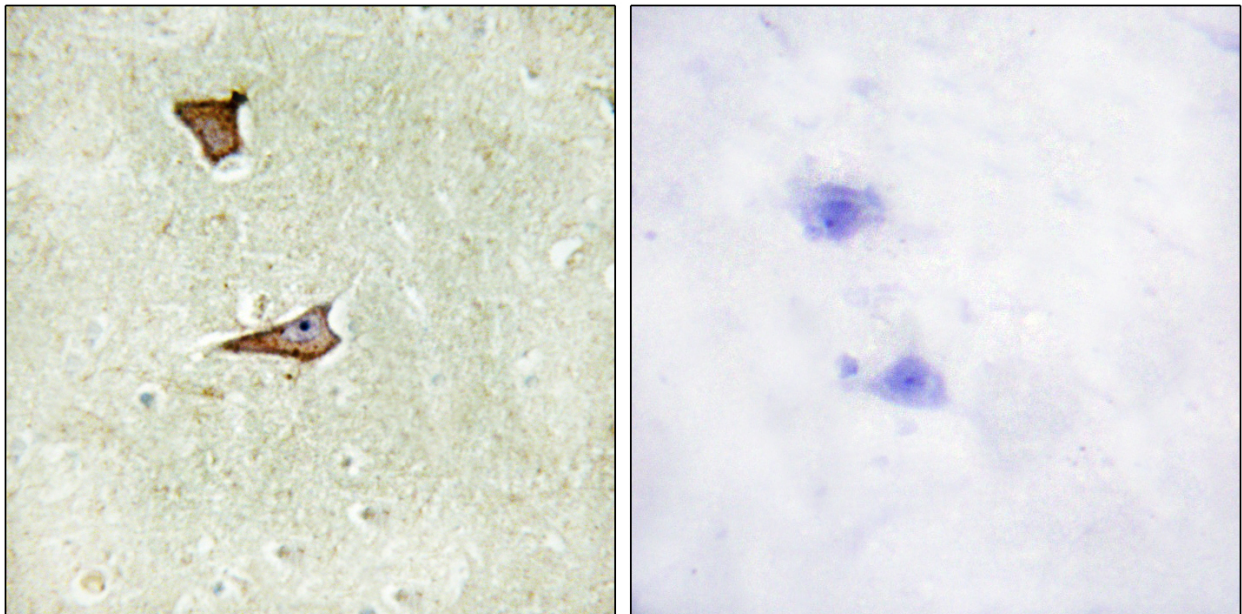
SUPPORT@GENUINBIOTECH.COM
TEL: +1-540-855-7041

ORDERS

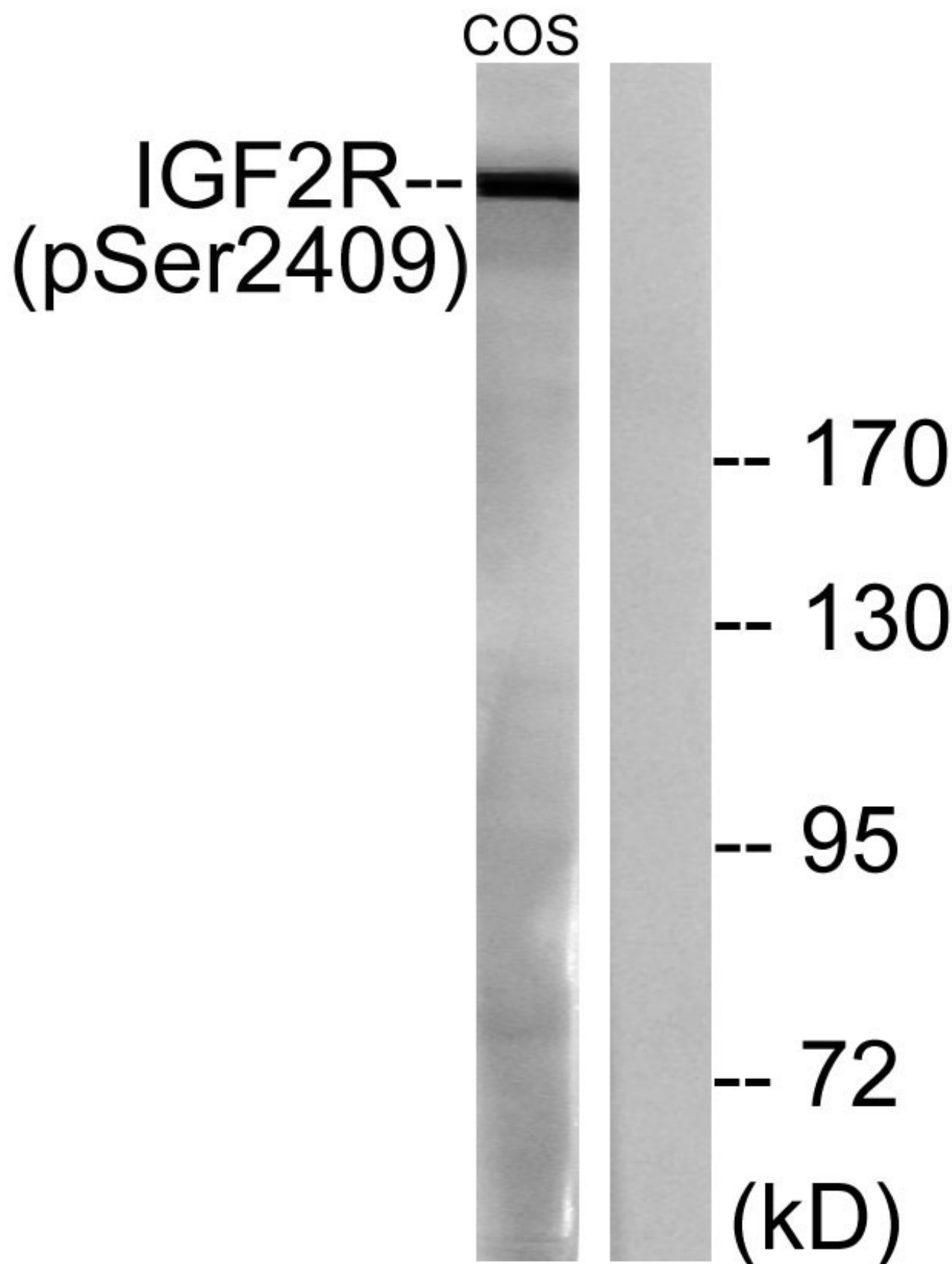
SALES@GENUINBIOTECH.COM
FAX: +1-540-855-7041

WWW.GENUINBIOTECH.COM

Validation Data



Immunohistochemistry analysis of paraffin-embedded human brain, using IGF2R (Phospho-Ser2409) Antibody. The picture on the right is blocked with the phospho peptide.



Western blotting analysis of lysates from COS7 cells treated with UV 15', using IGF2R (Phospho-

SUPPORT

SUPPORT@GENUINBIOTECH.COM
TEL: +1-540-855-7041

ORDERS

SALES@GENUINBIOTECH.COM
FAX: +1-540-855-7041

WWW.GENUINBIOTECH.COM

Anti-Phospho-IGF-IIR (S2409) Rabbit Polyclonal Antibody

PAGE 4

Ser2409) Antibody. The lane on the right is blocked with the phospho peptide.

SUPPORT

SUPPORT@GENUINBIOTECH.COM
TEL: +1-540-855-7041

ORDERS

SALES@GENUINBIOTECH.COM
FAX: +1-540-855-7041

WWW.GENUINBIOTECH.COM