

Anti-Phospho-Vimentin (S83) Rabbit Polyclonal Antibody



Catalog #: U1541

Aliases

VIM; Vimentin

Background

Gene Name: VIM

NCBI Gene Entry: [7431](#)

UniProt Entry: [P08670](#)

Application Information

Molecular Weight: Predicted, 54 kDa; observed, 54 kDa

Clonality: Rabbit polyclonal antibody

Species Reactivity: Human, mouse, rat

Applications Tested: Western blotting (WB), immunohistochemistry (IHC), immunocytochemistry (IC)

Immunogen

A synthesized peptide derived from human Phospho-Vimentin (Ser83)

Isotype

Rabbit IgG

Storage Buffer

Supplied in PBS containing 50% glycerol, 0.5% BSA and 0.02% sodium azide.

Storage

Store at -20 °C for one year.

Recommended Dilutions

Western Blotting (WB): 1:500-1:2,000

Immunohistochemistry (IHC): 1:100-1:300

Immunocytochemistry (IC): 1:50-1:200

Note: This product is for research use only.

Validation Data

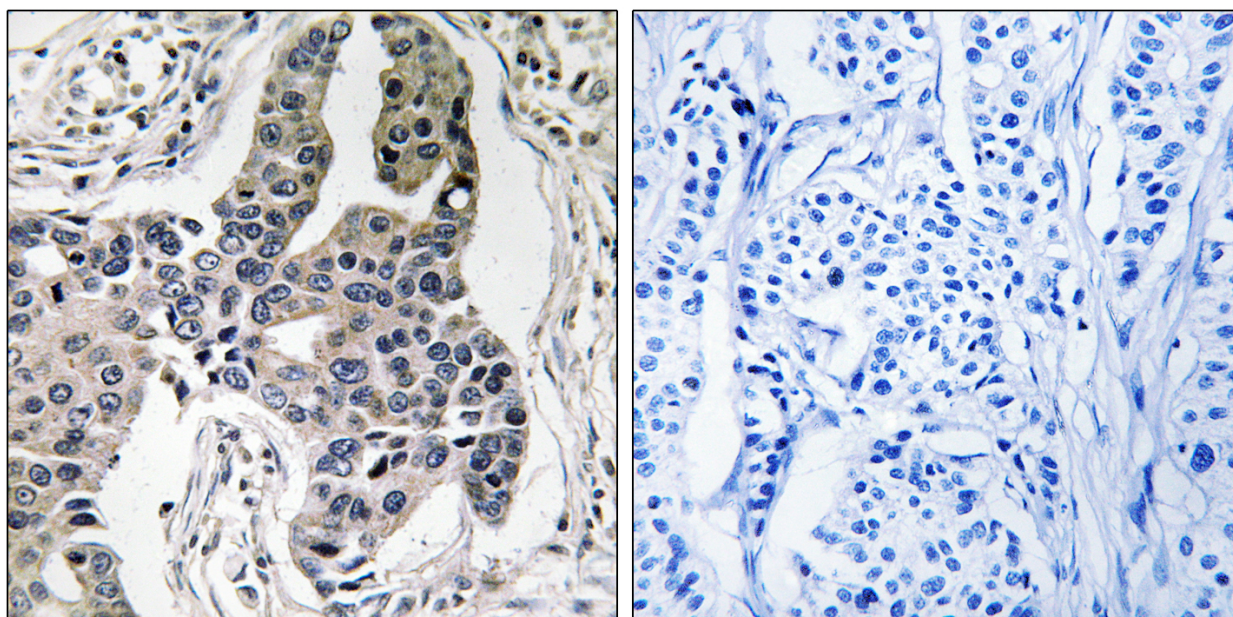
SUPPORT

SUPPORT@GENUINBIOTECH.COM
TEL: +1-540-855-7041

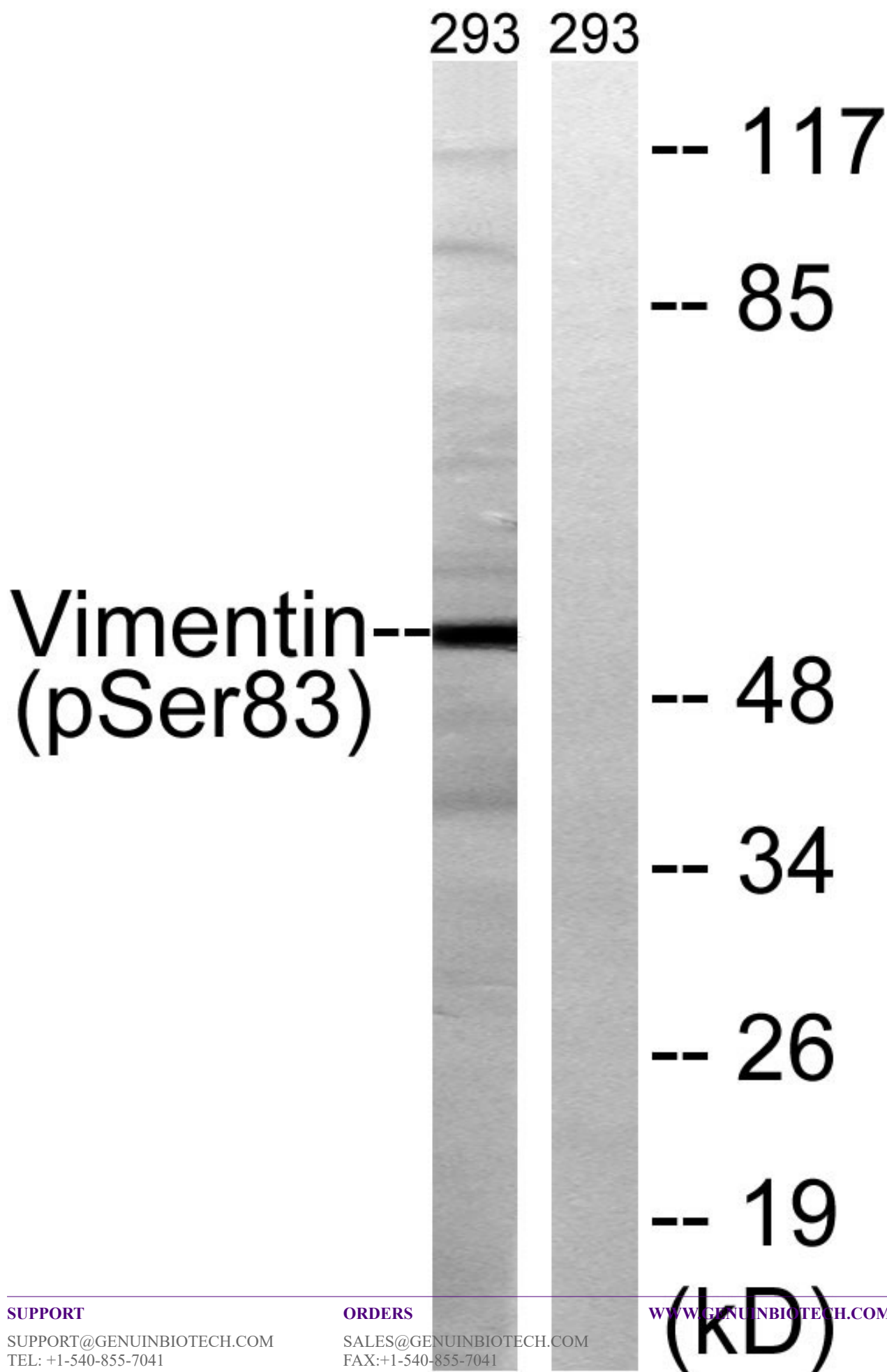
ORDERS

SALES@GENUINBIOTECH.COM
FAX: +1-540-855-7041

WWW.GENUINBIOTECH.COM



Immunohistochemistry analysis of paraffin-embedded human breast carcinoma, using Vimentin (Phospho-Ser83) Antibody. The picture on the right is blocked with the phospho peptide.



SUPPORT

SUPPORT@GENUINBIOTECH.COM
TEL: +1-540-855-7041

ORDERS

SALES@GENUINBIOTECH.COM
FAX: +1-540-855-7041

WWW.GENUINBIOTECH.COM

(kD)

Anti-Phospho-Vimentin (S83) Rabbit Polyclonal Antibody

PAGE 4

Western blotting analysis of lysates from 293 cells treated with paclitaxel 1uM 24h, using Vimentin (Phospho-Ser83) Antibody. The lane on the right is blocked with the phospho peptide.

SUPPORT

SUPPORT@GENUINBIOTECH.COM
TEL: +1-540-855-7041

ORDERS

SALES@GENUINBIOTECH.COM
FAX: +1-540-855-7041

WWW.GENUINBIOTECH.COM