

# Anti-Phospho-STAT1 (S727) Rabbit Polyclonal Antibody



**Catalog #: U1608**

## Aliases

STAT1; Signal transducer and activator of transcription 1-alpha/beta; Transcription factor ISGF-3 components p91/p84

## Background

Gene Name: STAT1

NCBI Gene Entry: [6772](#)

UniProt Entry: [P42224](#)

## Application Information

Molecular Weight: Predicted, 87 kDa; observed, 87 kDa

Clonality: Rabbit polyclonal antibody

Species Reactivity: Human, mouse, rat

Applications Tested: Western blotting (WB), immunohistochemistry (IHC), immunocytochemistry (IC)

## Immunogen

A synthesized peptide derived from human Phospho-Stat1 (Ser727)

## Isotype

Rabbit IgG

## Storage Buffer

Supplied in PBS containing 50% glycerol, 0.5% BSA and 0.02% sodium azide.

## Storage

Store at -20 °C for one year.

## Recommended Dilutions

Western Blotting (WB): 1:500-1:2,000

Immunohistochemistry (IHC): 1:100-1:300

Immunocytochemistry (IC): 1:50-1:200

**Note:** This product is for research use only.

## Validation Data

---

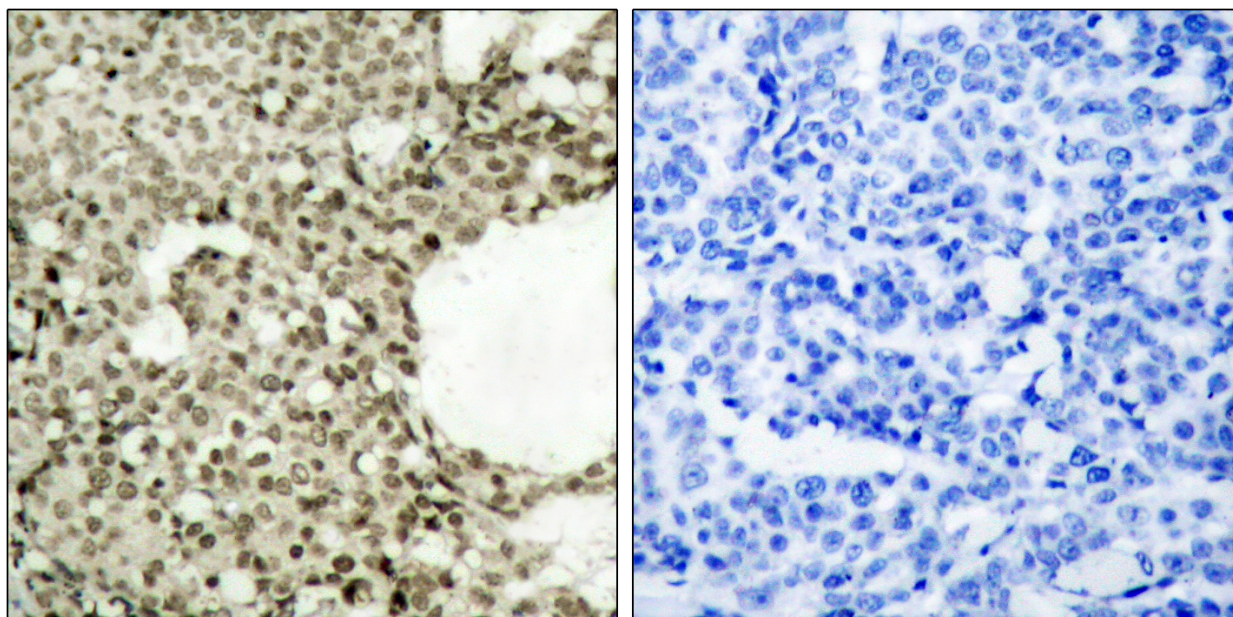
### SUPPORT

SUPPORT@GENUINBIOTECH.COM  
TEL: +1-540-855-7041

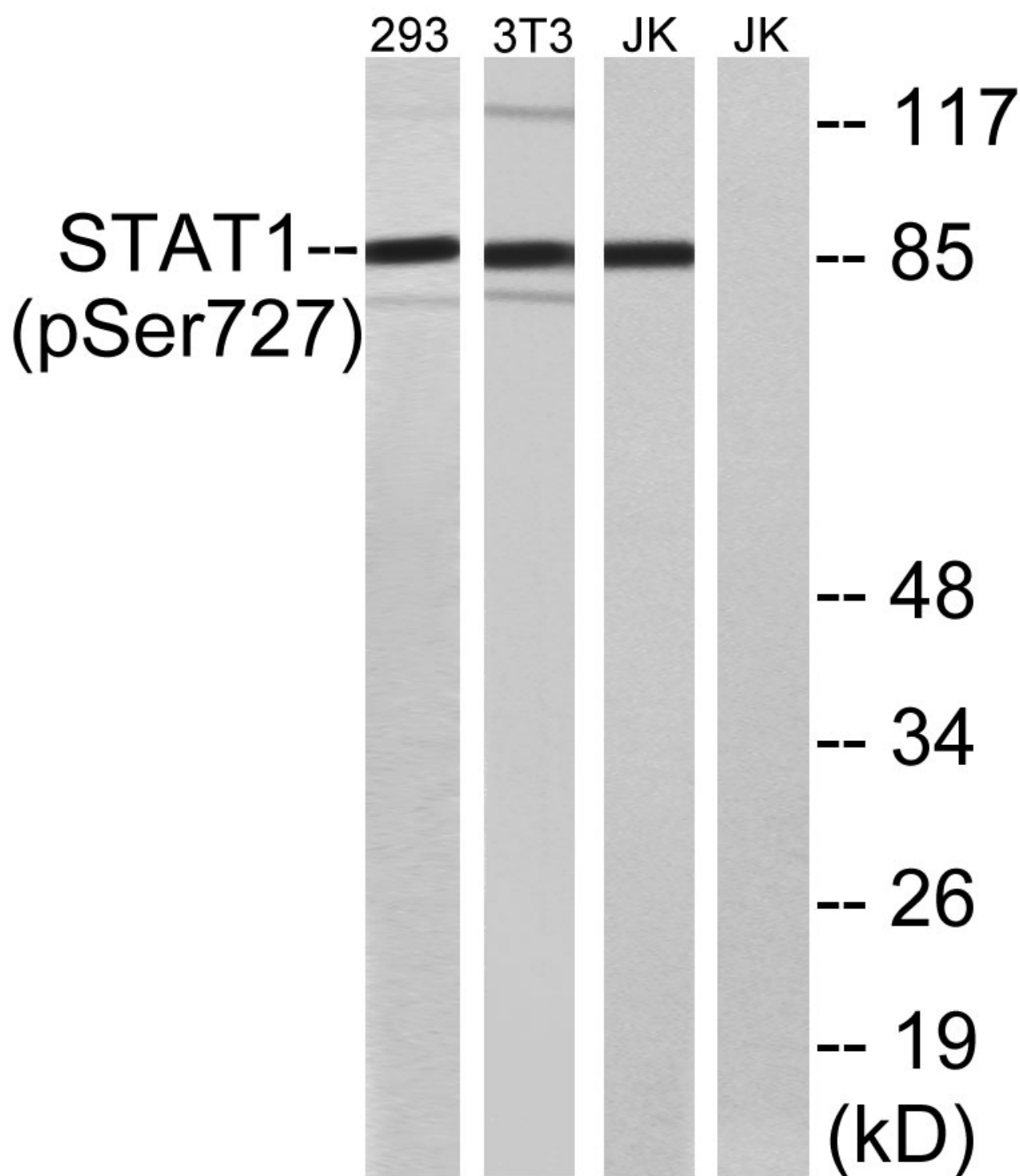
### ORDERS

SALES@GENUINBIOTECH.COM  
FAX: +1-540-855-7041

[WWW.GENUINBIOTECH.COM](http://WWW.GENUINBIOTECH.COM)



Immunohistochemistry analysis of paraffin-embedded human breast carcinoma, using STAT1 (Phospho-Ser727) Antibody. The picture on the right is blocked with the phospho peptide.



Western blotting analysis of lysates from 293 cells, 3T3 cells treated with UV (15mins) and Jurkat cells treated with eto (25uM, 24hours), using STAT1 (Phospho-Ser727) Antibody. The lane on the right is blocked with the phospho peptide.