

# Anti-Phospho-NMDAR1 (S897) Rabbit Polyclonal Antibody



**Catalog #: U1613**

## Aliases

GRIN1; NMDAR1; Glutamate [NMDA] receptor subunit zeta-1; N-methyl-D-aspartate receptor subunit NR1; NMD-R1

## Background

Gene Name: GRIN1

NCBI Gene Entry: [2902](#)

UniProt Entry: [Q05586](#)

## Application Information

Molecular Weight: Predicted, 105 kDa; observed, 120 kDa

Clonality: Rabbit polyclonal antibody

Species Reactivity: Human, mouse, rat

Applications Tested: Western blotting (WB), immunohistochemistry (IHC), immunocytochemistry (IC)

## Immunogen

A synthesized peptide derived from human Phospho-NMDA $\zeta$ 1 (Ser897)

## Isotype

Rabbit IgG

## Storage Buffer

Supplied in PBS containing 50% glycerol, 0.5% BSA and 0.02% sodium azide.

## Storage

Store at -20 °C for one year.

## Recommended Dilutions

Western Blotting (WB): 1:500-1:2,000

Immunohistochemistry (IHC): 1:100-1:300

Immunocytochemistry (IC): 1:50-1:200

**Note:** This product is for research use only.

## Validation Data

---

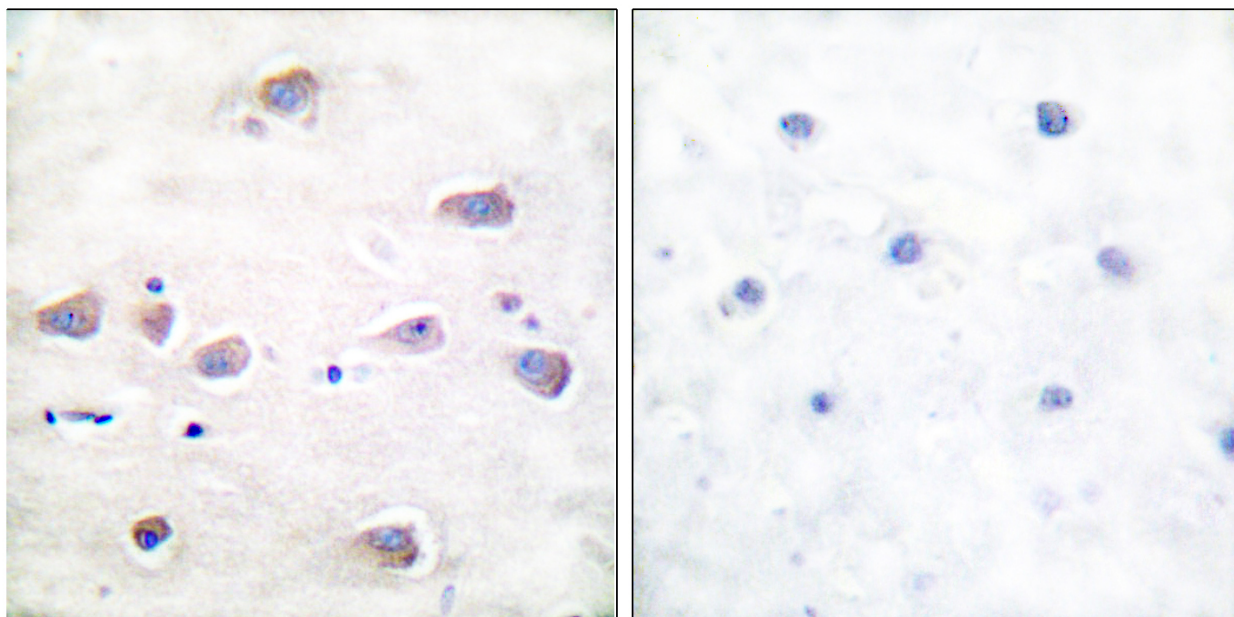
### SUPPORT

SUPPORT@GENUINBIOTECH.COM  
TEL: +1-540-855-7041

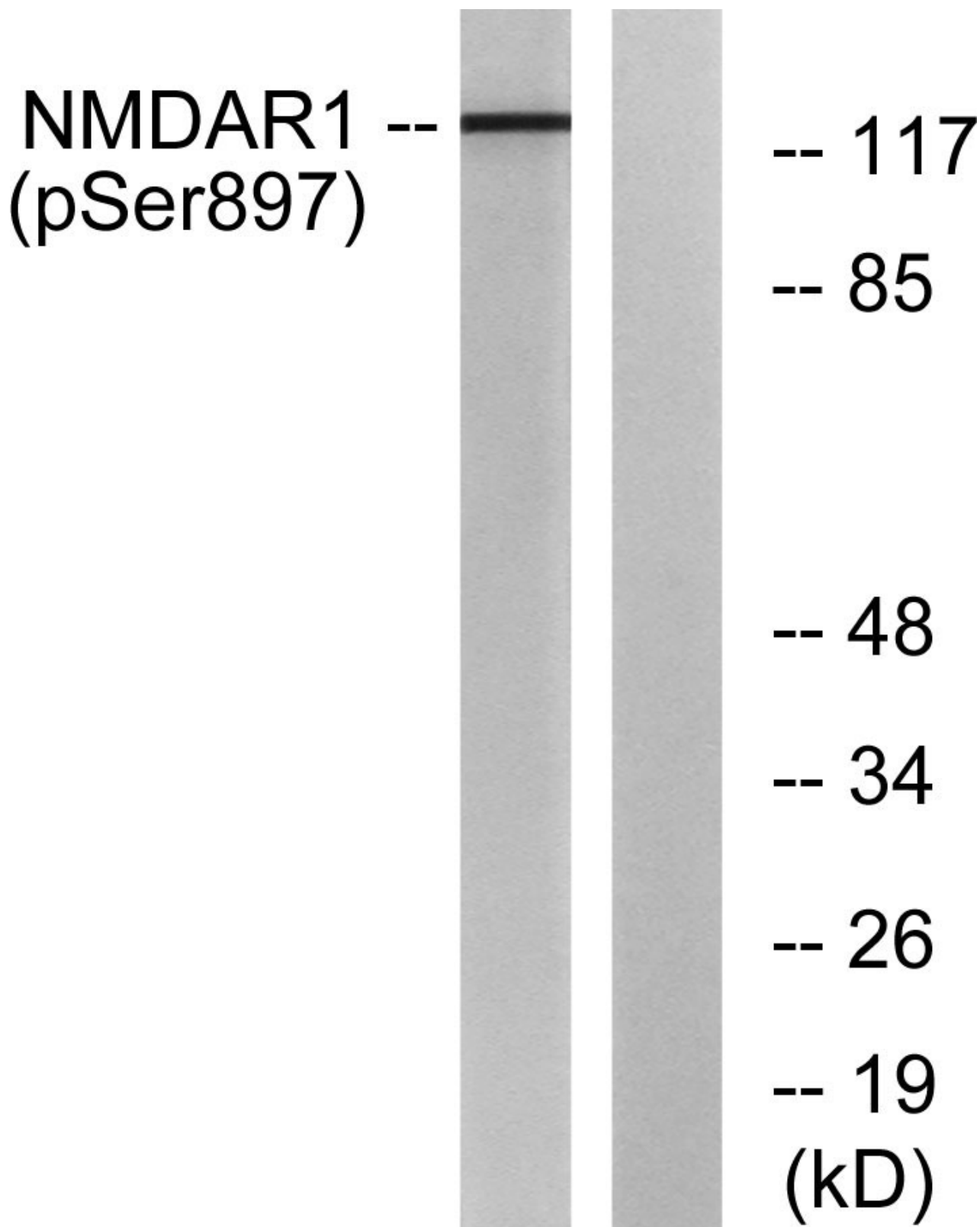
### ORDERS

SALES@GENUINBIOTECH.COM  
FAX: +1-540-855-7041

[WWW.GENUINBIOTECH.COM](http://WWW.GENUINBIOTECH.COM)



Immunohistochemistry analysis of paraffin-embedded human brain, using NMDAR1 (Phospho-Ser897) Antibody. The picture on the right is blocked with the phospho peptide.



Western blotting analysis of lysates from LOVO cells, using NMDAR1 (Phospho-Ser897) Antibody. The lane on the right is blocked with the phospho peptide.