

Anti-Phospho-Rsk-1 (T573) Rabbit Polyclonal Antibody



Catalog #: U1640

Aliases

RPS6KA1; MAPKAPK1A; RSK1; Ribosomal protein S6 kinase alpha-1; S6K-alpha-1; 90 kDa ribosomal protein S6 kinase 1; p90-RSK 1; p90RSK1; p90S6K; MAP kinase-activated protein kinase 1a; MAPK-activated protein kinase 1a; MAPKAP kinase 1a; MAPKAP

Background

Gene Name: RPS6KA1

NCBI Gene Entry: [6195](#)

UniProt Entry: [Q15418](#)

Application Information

Molecular Weight: Predicted, 83 kDa; observed, 95 kDa

Clonality: Rabbit polyclonal antibody

Species Reactivity: Human, mouse, rat

Applications Tested: Western blotting (WB), immunohistochemistry (IHC), immunocytochemistry (IC)

Immunogen

A synthesized peptide derived from human Phospho-Rsk-1 (Thr573)

Isotype

Rabbit IgG

Storage Buffer

Supplied in PBS containing 50% glycerol, 0.5% BSA and 0.02% sodium azide.

Storage

Store at -20 °C for one year.

Recommended Dilutions

Western Blotting (WB): 1:500-1:2,000

Immunohistochemistry (IHC): 1:100-1:300

Immunocytochemistry (IC): 1:200-1:1,000

Note: This product is for research use only.

SUPPORT

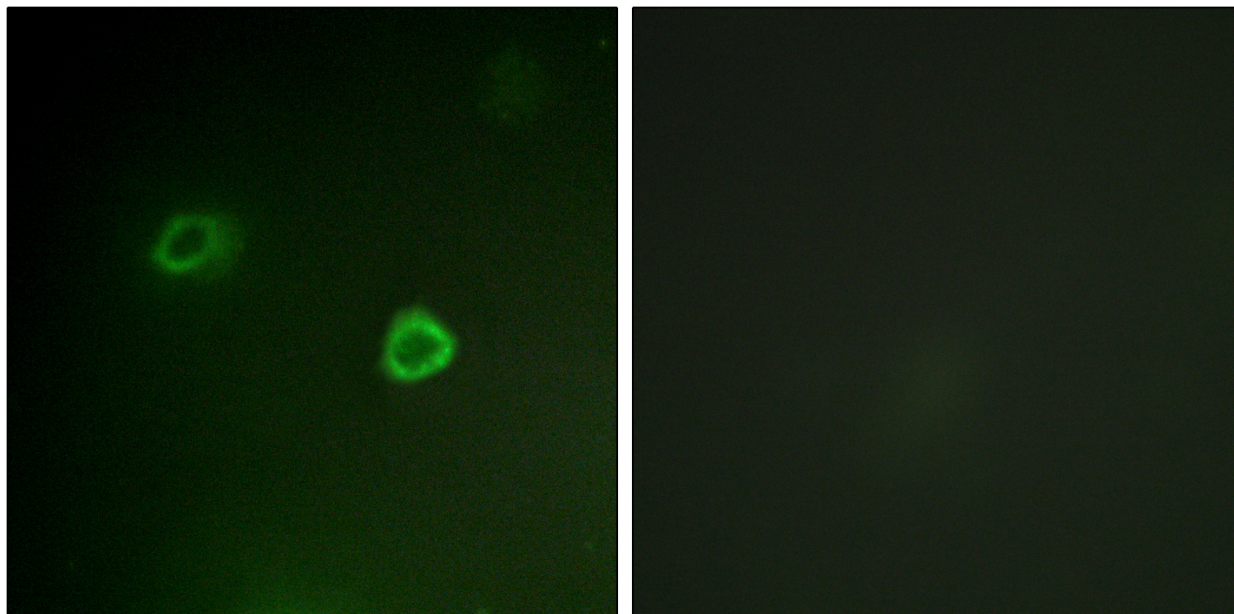
SUPPORT@GENUINBIOTECH.COM
TEL: +1-540-855-7041

ORDERS

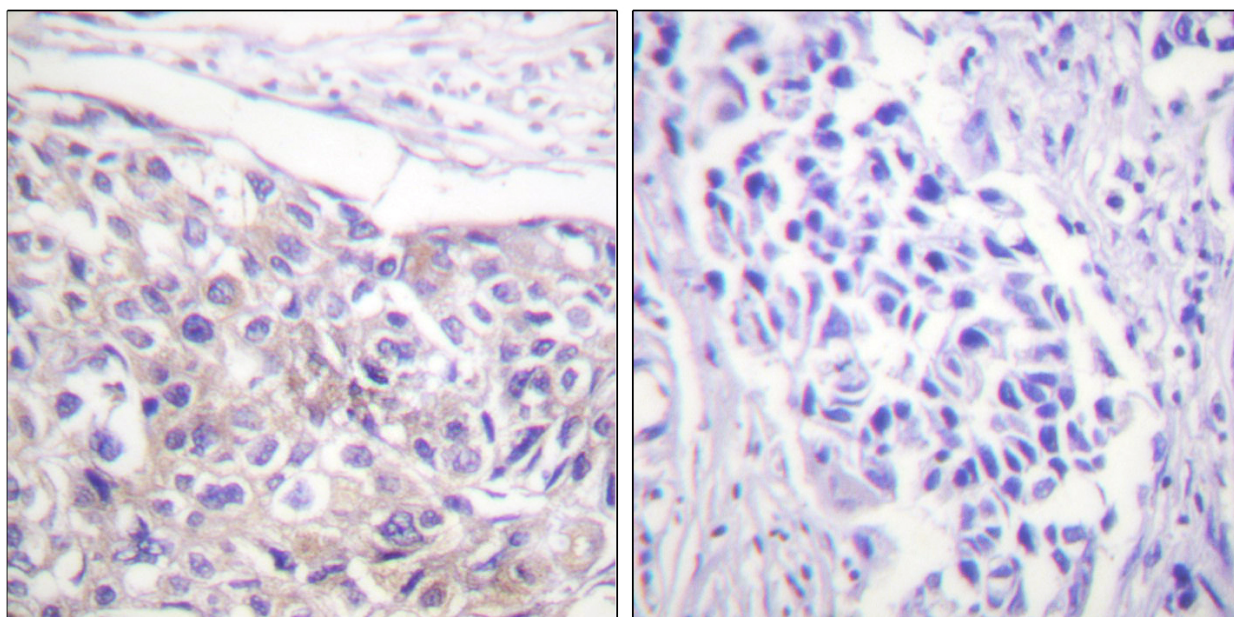
SALES@GENUINBIOTECH.COM
FAX: +1-540-855-7041

WWW.GENUINBIOTECH.COM

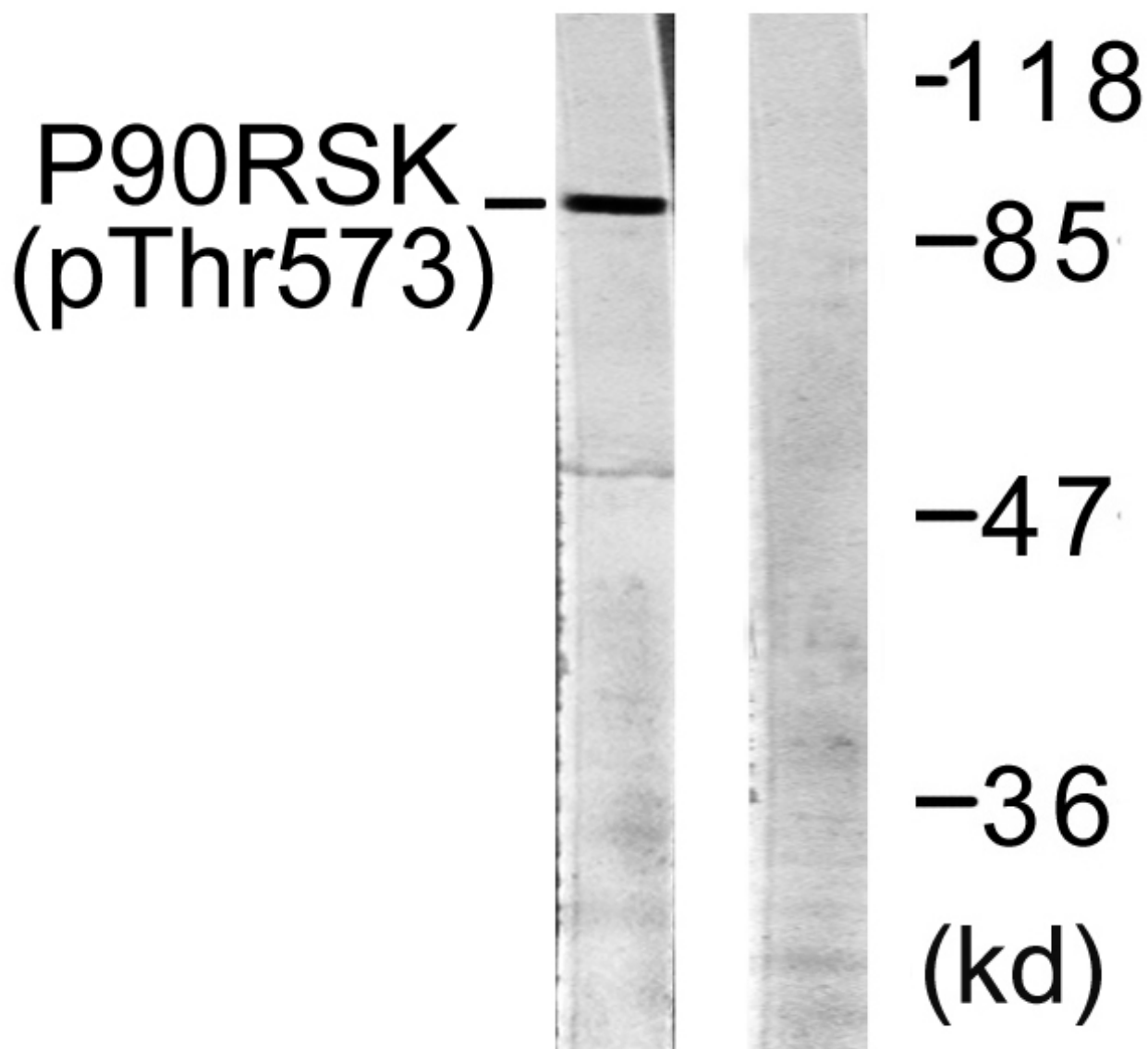
Validation Data



Immunofluorescence analysis of COS7 cells, using p90 RSK (Phospho-Thr573) Antibody. The picture on the right is blocked with the phospho peptide.



Immunohistochemistry analysis of paraffin-embedded human breast carcinoma, using p90 RSK (Phospho-Thr573) Antibody. The picture on the right is blocked with the phospho peptide.



Western blotting analysis of lysates from 293 cells treated with UV 30', using p90 RSK (Phospho-Thr573) Antibody. The lane on the right is blocked with the phospho peptide.