

# Anti-Phospho-ATF2 (S480) Rabbit Polyclonal Antibody



**Catalog #: U1660**

## Aliases

ATF2; CREB2; CREBP1; Cyclic AMP-dependent transcription factor ATF-2; cAMP-dependent transcription factor ATF-2; Activating transcription factor 2; Cyclic AMP-responsive element-binding protein 2; CREB-2; cAMP-responsive element-binding pro

## Background

Gene Name: ATF2

NCBI Gene Entry: [1386](#)

UniProt Entry: [P15336](#)

## Application Information

Molecular Weight: Predicted, 55 kDa; observed, 43 kDa

Clonality: Rabbit polyclonal antibody

Species Reactivity: Human, rat

Applications Tested: Western blotting (WB), immunohistochemistry (IHC), immunocytochemistry (IC)

## Immunogen

A synthesized peptide derived from human Phospho-ATF-2 (Ser480)

## Isotype

Rabbit IgG

## Storage Buffer

Supplied in PBS containing 50% glycerol, 0.5% BSA and 0.02% sodium azide.

## Storage

Store at -20 °C for one year.

## Recommended Dilutions

Western Blotting (WB): 1:500-1:2,000

Immunohistochemistry (IHC): 1:100-1:300

Immunocytochemistry (IC): 1:200-1:1,000

**Note:** This product is for research use only.

---

### SUPPORT

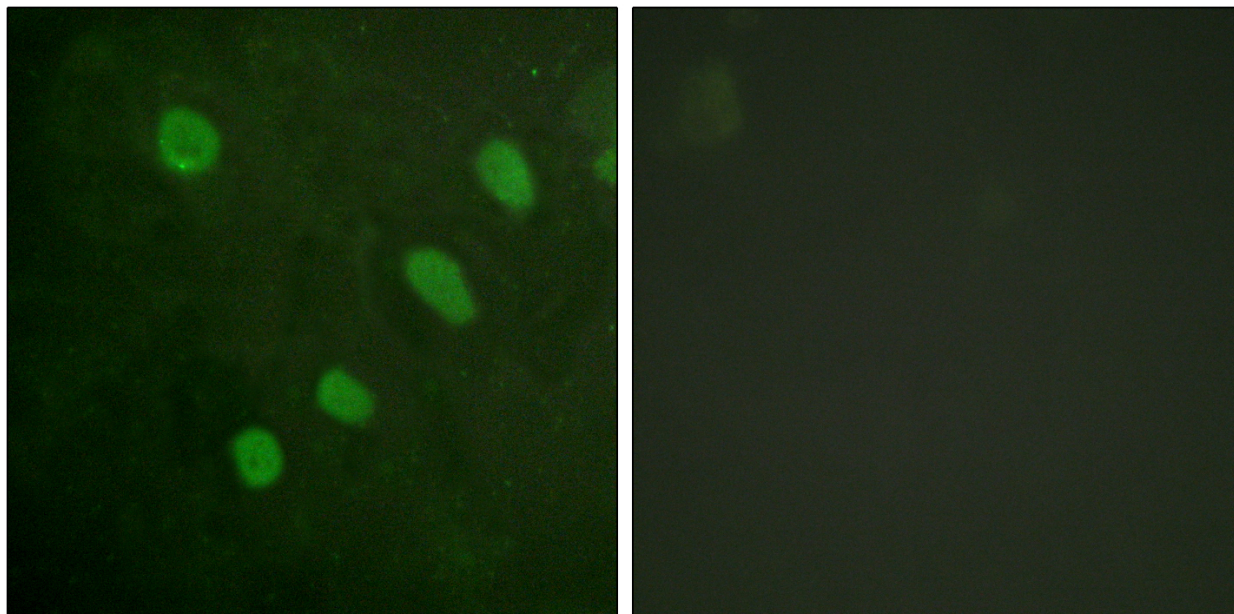
SUPPORT@GENUINBIOTECH.COM  
TEL: +1-540-855-7041

### ORDERS

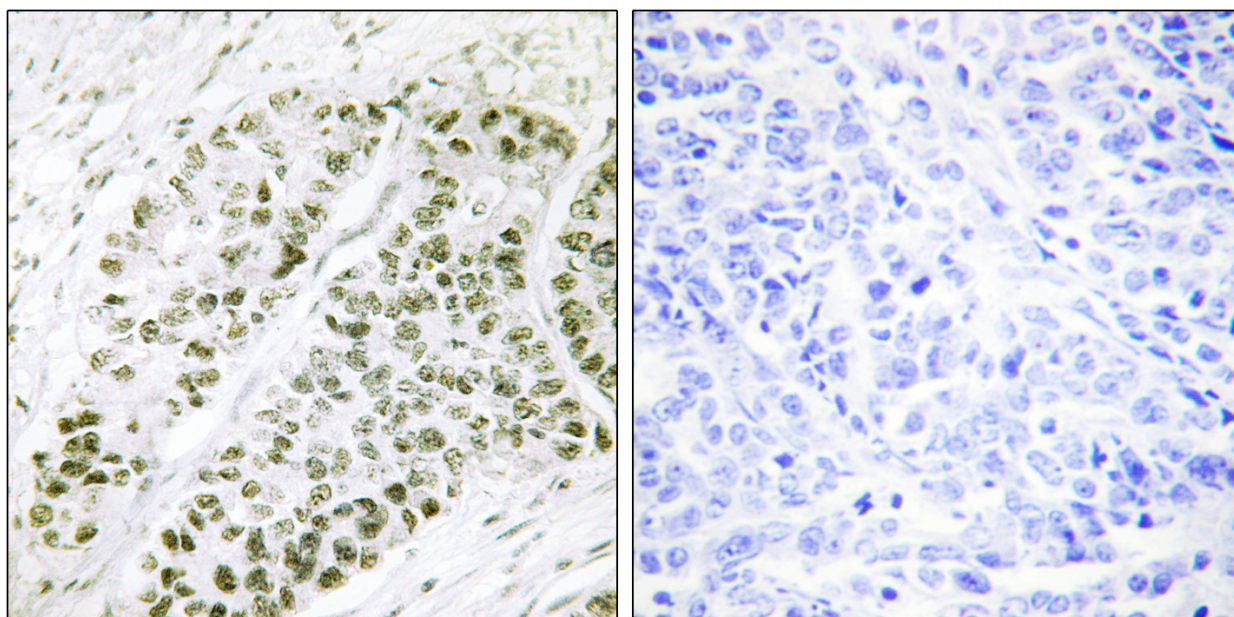
SALES@GENUINBIOTECH.COM  
FAX: +1-540-855-7041

[WWW.GENUINBIOTECH.COM](http://WWW.GENUINBIOTECH.COM)

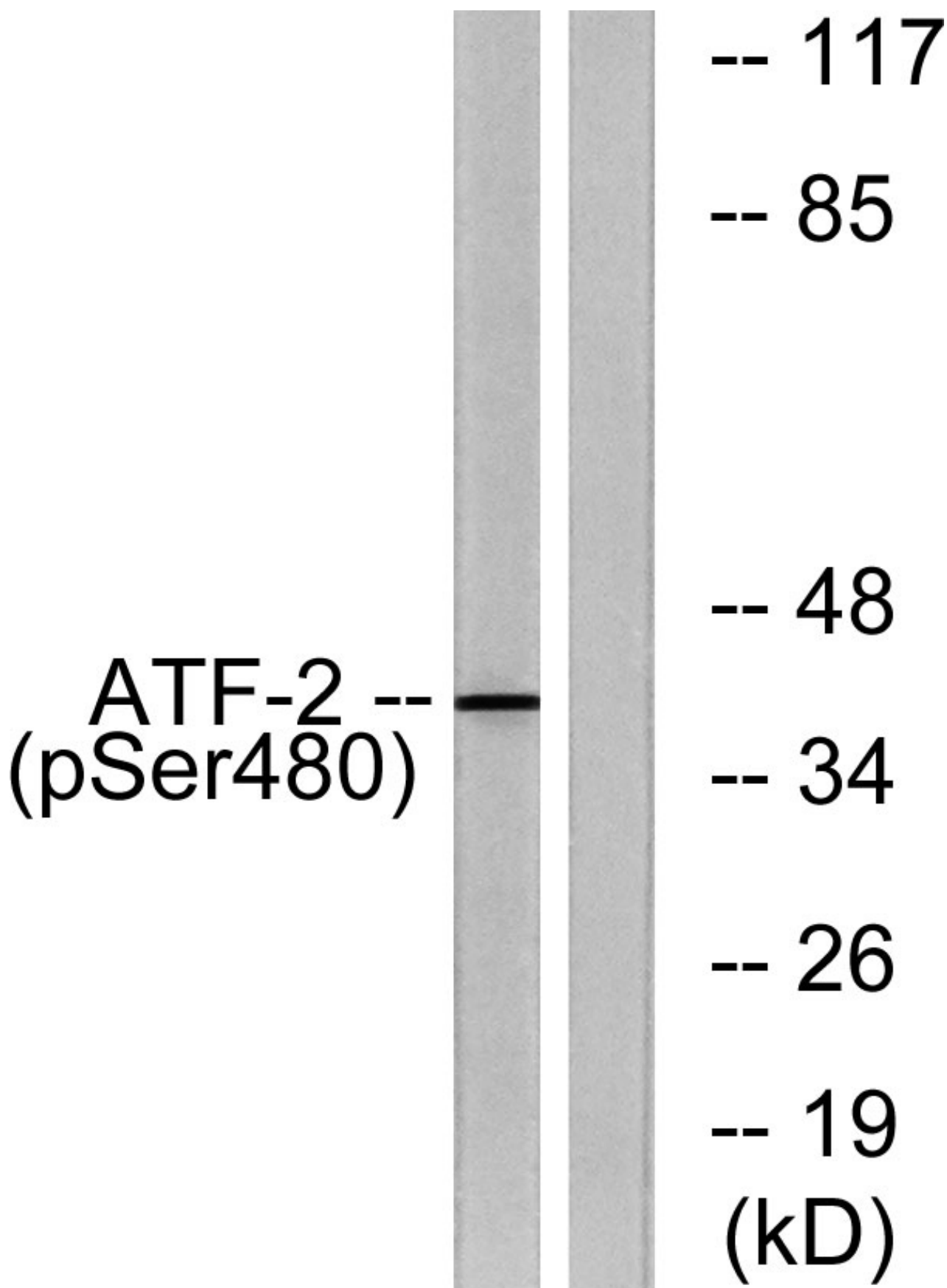
## Validation Data



Immunofluorescence analysis of HeLa cells, using ATF2 (Phospho-Ser480) Antibody. The picture on the right is blocked with the phospho peptide.



Immunohistochemistry analysis of paraffin-embedded human lung carcinoma, using ATF2 (Phospho-Ser480) Antibody. The picture on the right is blocked with the phospho peptide.



## **Anti-Phospho-ATF2 (S480) Rabbit Polyclonal Antibody**

PAGE 4

Western blotting analysis of lysates from HUVEC cells treated with Anisomycin 25ug/ml 30', using ATF2 (Phospho-Ser480) Antibody. The lane on the right is blocked with the phospho peptide.

---

### **SUPPORT**

SUPPORT@GENUINBIOTECH.COM  
TEL: +1-540-855-7041

### **ORDERS**

SALES@GENUINBIOTECH.COM  
FAX: +1-540-855-7041

**WWW.GENUINBIOTECH.COM**