

Anti-Phospho-DREAM (S63) Rabbit Polyclonal Antibody



Catalog #: U1680

Aliases

KCNIP3; CSEN; DREAM; KCHIP3; Calsenilin; A-type potassium channel modulatory protein 3; DRE-antagonist modulator; DREAM; Kv channel-interacting protein 3; KChIP3

Background

Gene Name: KCNIP3

NCBI Gene Entry: [30818](#)

UniProt Entry: [Q9Y2W7](#)

Application Information

Molecular Weight: Predicted, 39 kDa; observed, 29 kDa

Clonality: Rabbit polyclonal antibody

Species Reactivity: Human, mouse

Applications Tested: Western blotting (WB), immunohistochemistry (IHC), immunocytochemistry (IC)

Immunogen

A synthesized peptide derived from human Phospho-DREAM (Ser63)

Isotype

Rabbit IgG

Storage Buffer

Supplied in PBS containing 50% glycerol, 0.5% BSA and 0.02% sodium azide.

Storage

Store at -20 °C for one year.

Recommended Dilutions

Western Blotting (WB): 1:500-1:2,000

Immunohistochemistry (IHC): 1:100-1:300

Immunocytochemistry (IC): 1:200-1:1,000

Note: This product is for research use only.

Validation Data

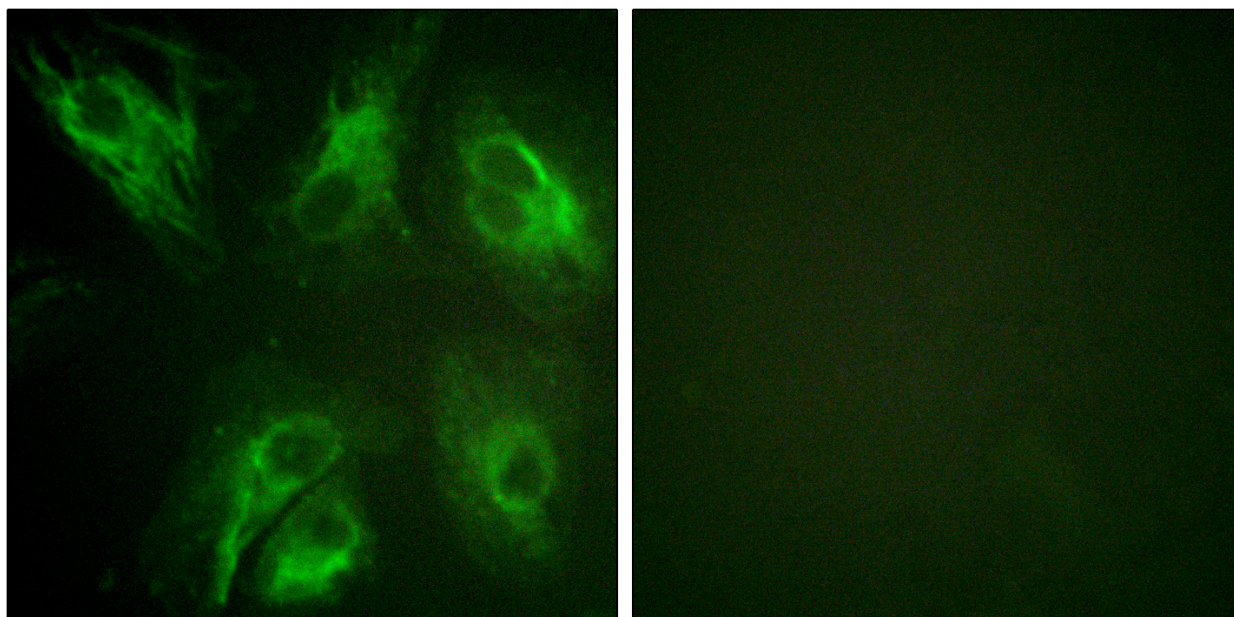
SUPPORT

SUPPORT@GENUINBIOTECH.COM
TEL: +1-540-855-7041

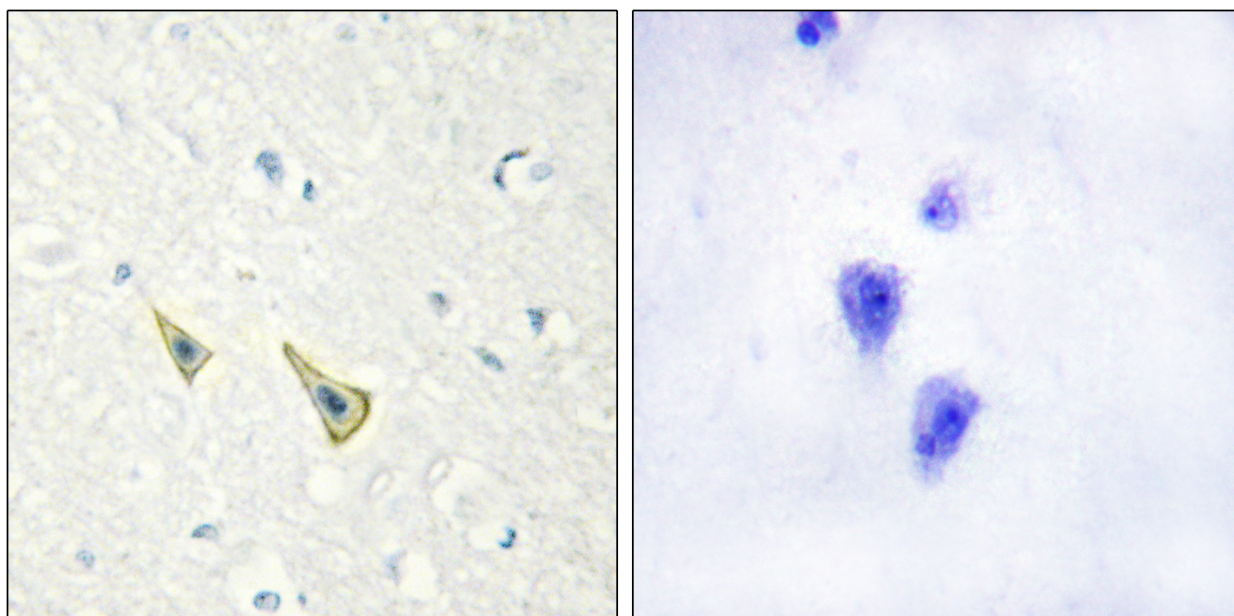
ORDERS

SALES@GENUINBIOTECH.COM
FAX: +1-540-855-7041

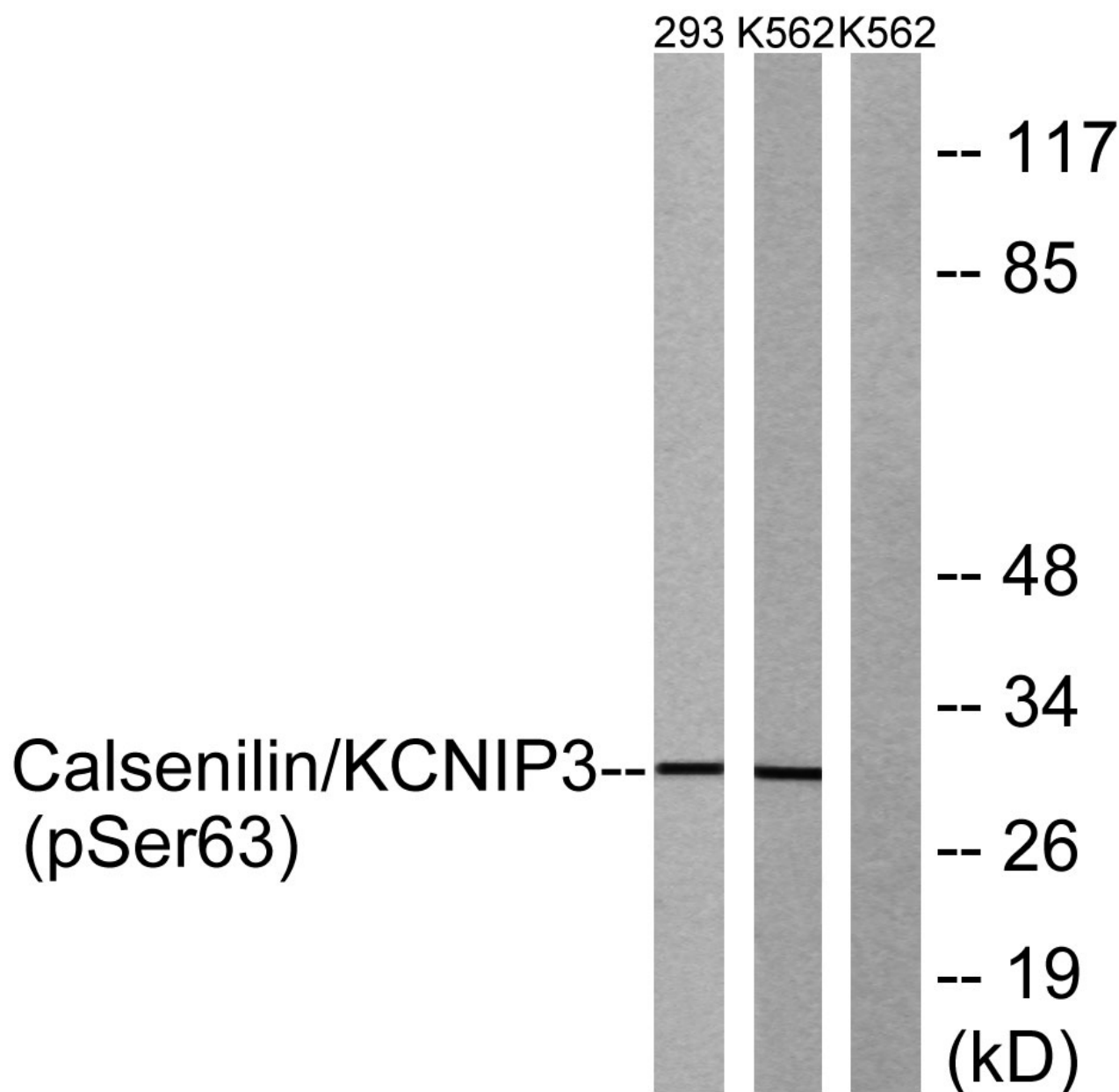
WWW.GENUINBIOTECH.COM



Immunofluorescence analysis of HeLa cells, using Calsenilin/KCNIP3 (Phospho-Ser63) Antibody. The picture on the right is blocked with the phospho peptide.



Immunohistochemistry analysis of paraffin-embedded human brain, using Calsenilin/KCNIP3 (Phospho-Ser63) Antibody. The picture on the right is blocked with the phospho peptide.



Western blotting analysis of lysates from K562 cells treated with forskolin 40nM 30' and 293 cells treated with PMA 125ng/ml 30', using Calsenilin/KCNIP3 (Phospho-Ser63) Antibody. The lane on the right is blocked with the phospho peptide.