

Anti-Phospho-Rac GAP1 (S387) Rabbit Polyclonal Antibody



Catalog #: U1683

Aliases

RACGAP1; KIAA1478; MGCRAAGAP; Rac GTPase-activating protein 1; Male germ cell RacGap; MgcRacGAP; Protein CYK4 homolg; CYK4; HsCYK-4

Background

Gene Name: RACGAP1

NCBI Gene Entry: [29127](#)

UniProt Entry: [Q9H0H5](#)

Application Information

Molecular Weight: Predicted, 71 kDa; observed, 72 kDa

Clonality: Rabbit polyclonal antibody

Species Reactivity: Human, mouse, rat, monkey

Applications Tested: Western blotting (WB), immunohistochemistry (IHC), immunocytochemistry (IC)

Immunogen

A synthesized peptide derived from human Phospho-Rac GAP1 (Ser387)

Isotype

Rabbit IgG

Storage Buffer

Supplied in PBS containing 50% glycerol, 0.5% BSA and 0.02% sodium azide.

Storage

Store at -20 °C for one year.

Recommended Dilutions

Western Blotting (WB): 1:500-1:2,000

Immunohistochemistry (IHC): 1:100-1:300

Immunocytochemistry (IC): 1:200-1:1,000

Note: This product is for research use only.

Validation Data

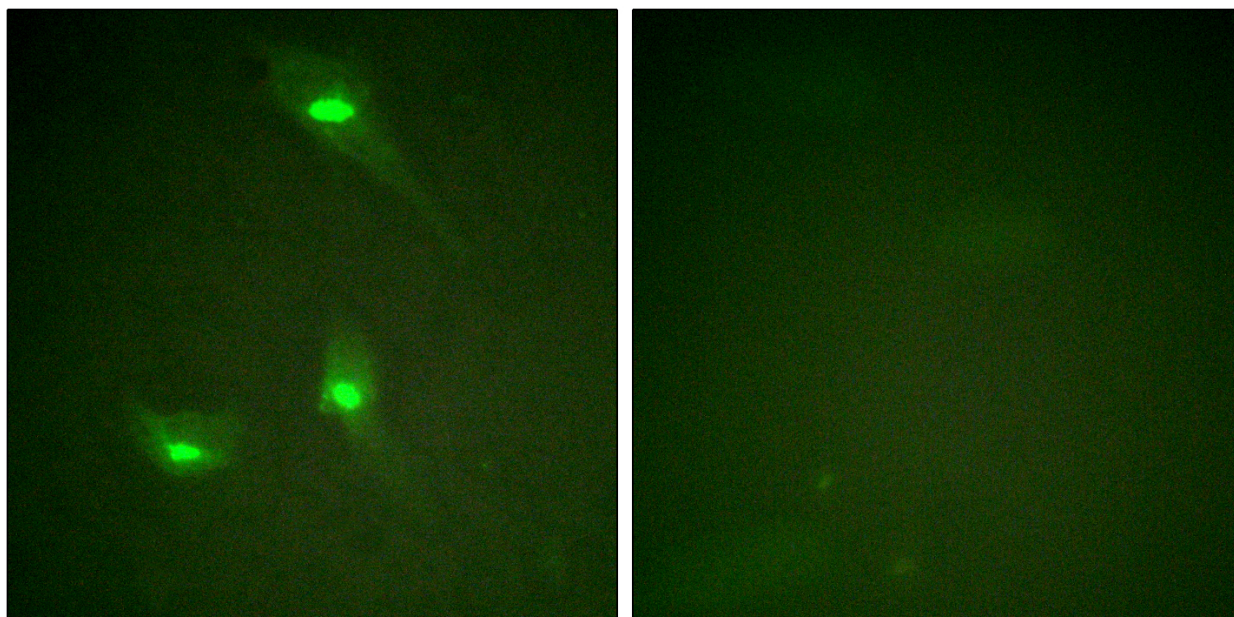
SUPPORT

SUPPORT@GENUINBIOTECH.COM
TEL: +1-540-855-7041

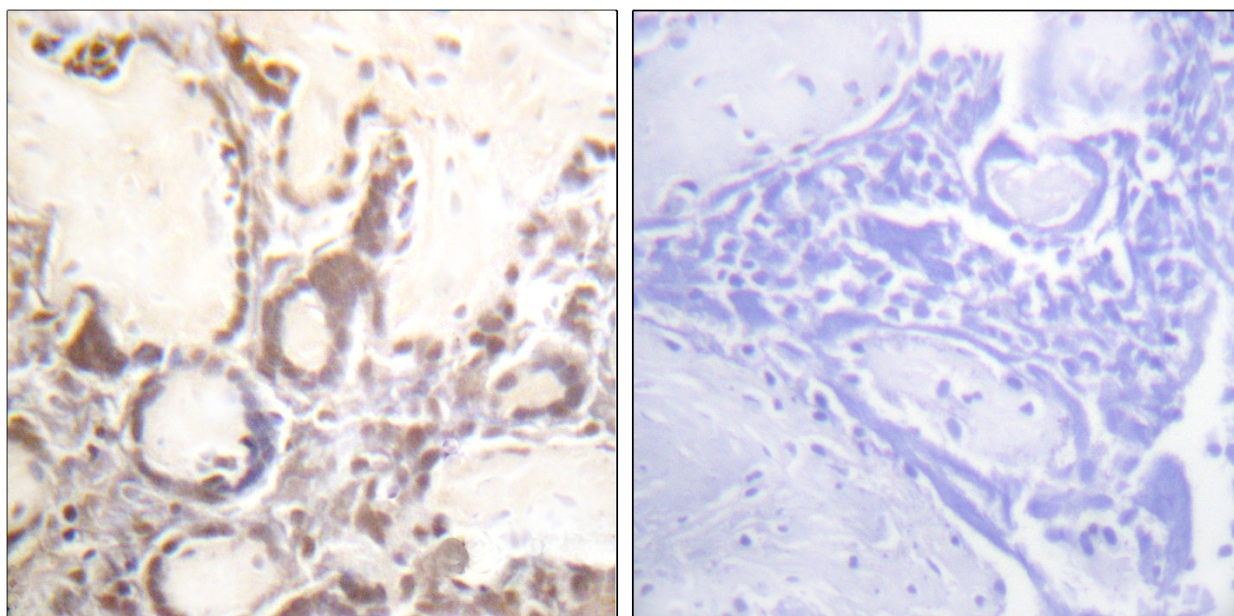
ORDERS

SALES@GENUINBIOTECH.COM
FAX: +1-540-855-7041

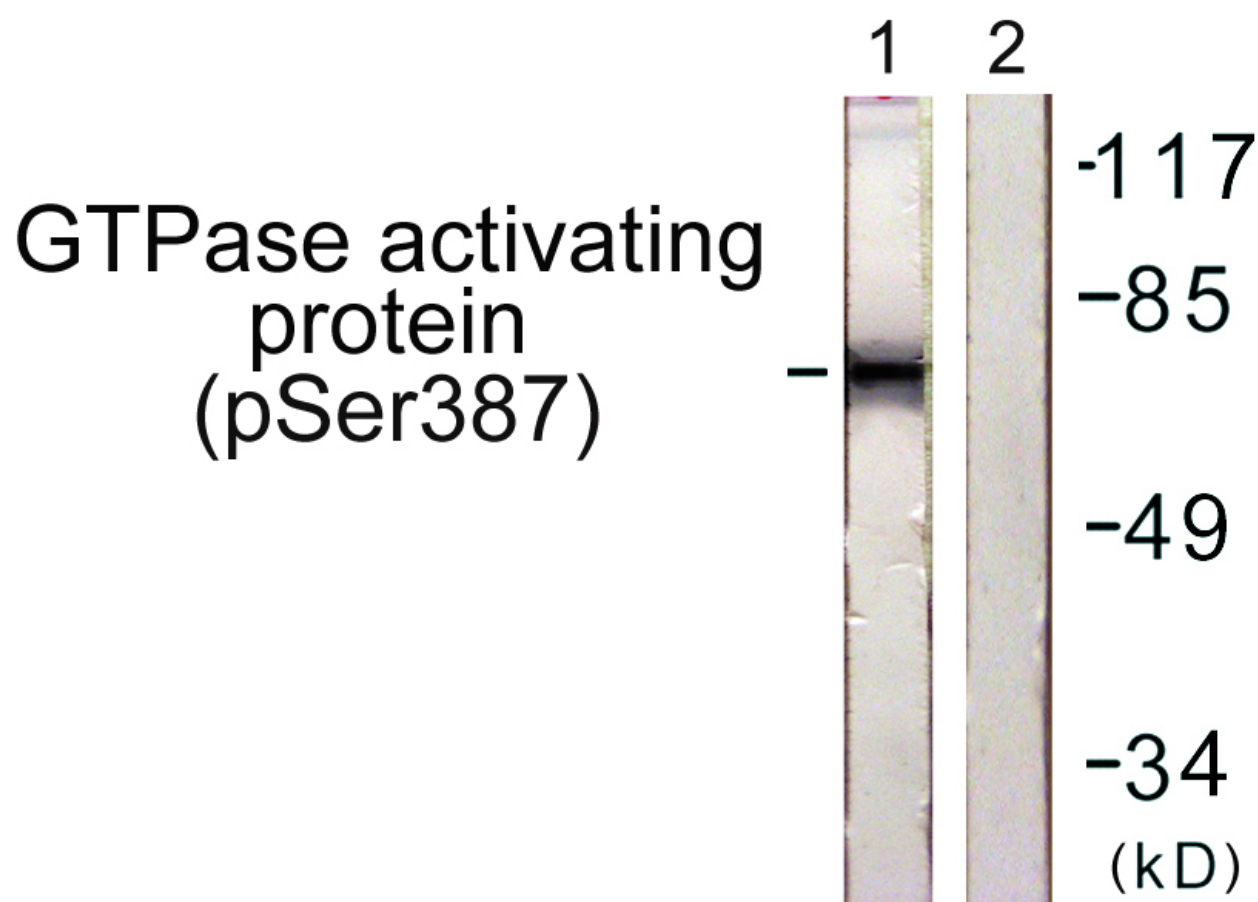
WWW.GENUINBIOTECH.COM



Immunofluorescence analysis of HeLa cells, using GTPase Activating Protein (Phospho-Ser387) Antibody. The picture on the right is blocked with the phospho peptide.



Immunohistochemistry analysis of paraffin-embedded human placenta, using GTPase Activating Protein (Phospho-Ser387) Antibody. The picture on the right is blocked with the phospho peptide.



Western blotting analysis of lysates from COS7 cells, using GTPase Activating Protein (Phospho-Ser387) Antibody. The lane on the right is blocked with the phospho peptide.