

Anti-Phospho-CRMP-2 (T514) Rabbit Polyclonal Antibody



Catalog #: U1696

Aliases

DPYSL2; CRMP2; ULIP2; Dihydropyrimidinase-related protein 2; DRP-2; Collapsin response mediator protein 2; CRMP-2; N2A3; Unc-33-like phosphoprotein 2; ULIP-2

Background

Gene Name: DPYSL2

NCBI Gene Entry: [1808](#)

UniProt Entry: [Q16555](#)

Application Information

Molecular Weight: Predicted, 62 kDa; observed, 65 kDa

Clonality: Rabbit polyclonal antibody

Species Reactivity: Human, mouse, rat

Applications Tested: Western blotting (WB), immunohistochemistry (IHC), immunocytochemistry (IC)

Immunogen

A synthesized peptide derived from human Phospho-CRMP-2 (Thr514)

Isotype

Rabbit IgG

Storage Buffer

Supplied in PBS containing 50% glycerol, 0.5% BSA and 0.02% sodium azide.

Storage

Store at -20 °C for one year.

Recommended Dilutions

Western Blotting (WB): 1:500-1:2,000

Immunohistochemistry (IHC): 1:100-1:300

Immunocytochemistry (IC): 1:200-1:1,000

Note: This product is for research use only.

Validation Data

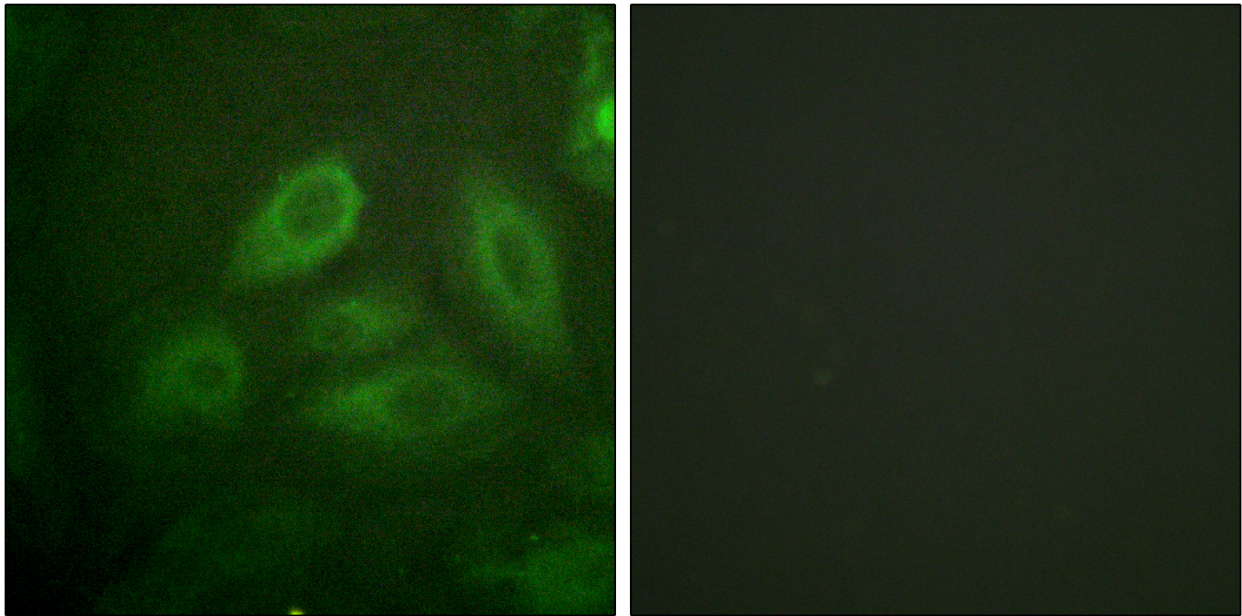
SUPPORT

SUPPORT@GENUINBIOTECH.COM
TEL: +1-540-855-7041

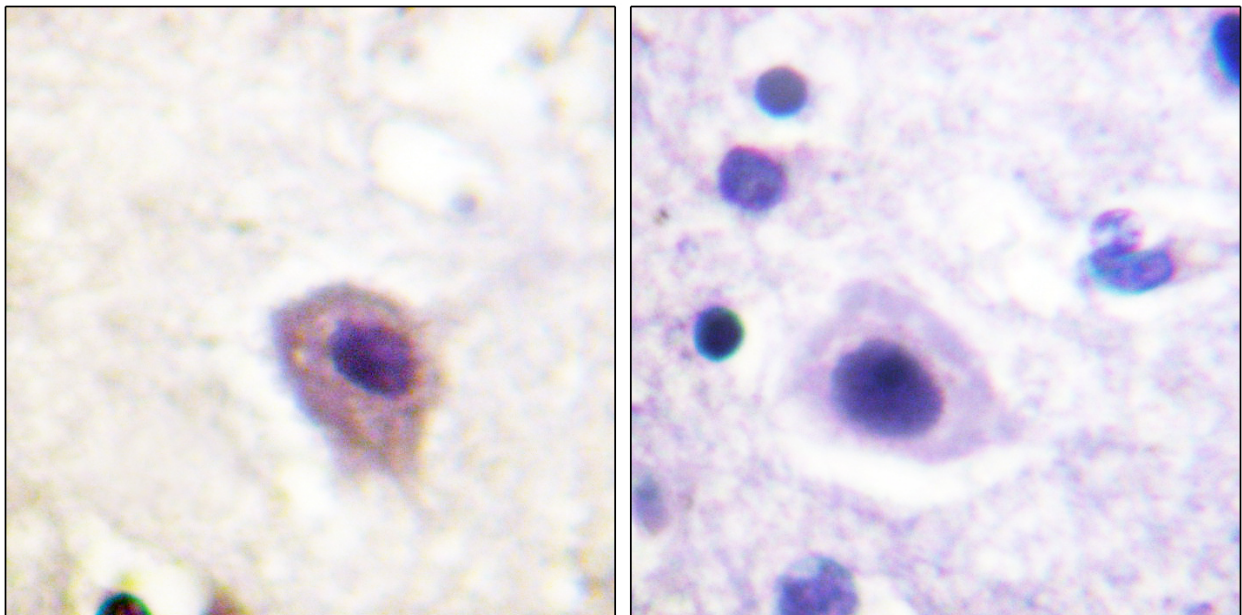
ORDERS

SALES@GENUINBIOTECH.COM
FAX: +1-540-855-7041

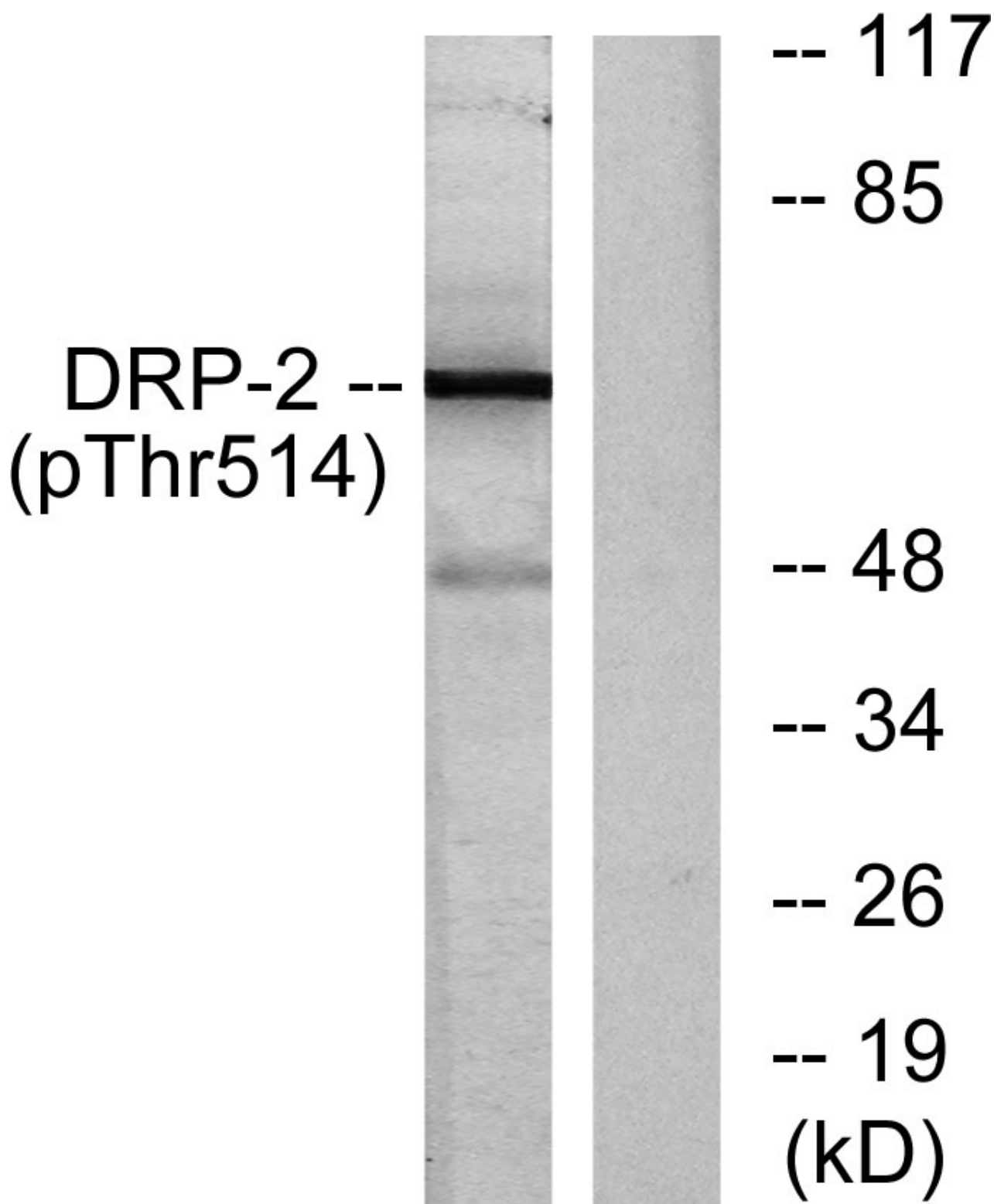
WWW.GENUINBIOTECH.COM



Immunofluorescence analysis of HeLa cells, using DRP-2 (Phospho-Thr514) Antibody. The picture on the right is blocked with the phospho peptide.



Immunohistochemistry analysis of paraffin-embedded human brain, using DRP-2 (Phospho-Thr514) Antibody. The picture on the right is blocked with the phospho peptide.



Western blotting analysis of lysates from NIH/3T3 cells treated with PMA 125ng/ml 30', using DRP-2 (Phospho-Thr514) Antibody. The lane on the right is blocked with the phospho peptide.