

Anti-Phospho-PDGFR beta (Y1021) Rabbit Polyclonal Antibody



Catalog #: U1714

Aliases

PDGFRB; PDGFR; PDGFR1; Platelet-derived growth factor receptor beta; PDGF-R-beta; PDGFR-beta; Beta platelet-derived growth factor receptor; Beta-type platelet-derived growth factor receptor; CD140 antigen-like family member B; Platelet-deri

Background

Gene Name: PDGFRB

NCBI Gene Entry: [5159](#)

UniProt Entry: [P09619](#)

Application Information

Molecular Weight: Predicted, 124 kDa; observed, 135-180 kDa

Clonality: Rabbit polyclonal antibody

Species Reactivity: Human, mouse, rat

Applications Tested: Western blotting (WB), immunohistochemistry (IHC), immunocytochemistry (IC)

Immunogen

A synthesized peptide derived from human Phospho-PDGFR- β (Tyr1021)

Isotype

Rabbit IgG

Storage Buffer

Supplied in PBS containing 50% glycerol, 0.5% BSA and 0.02% sodium azide.

Storage

Store at -20 °C for one year.

Recommended Dilutions

Western Blotting (WB): 1:500-1:2,000

Immunohistochemistry (IHC): 1:100-1:300

Immunocytochemistry (IC): 1:50-1:200

Note: This product is for research use only.

SUPPORT

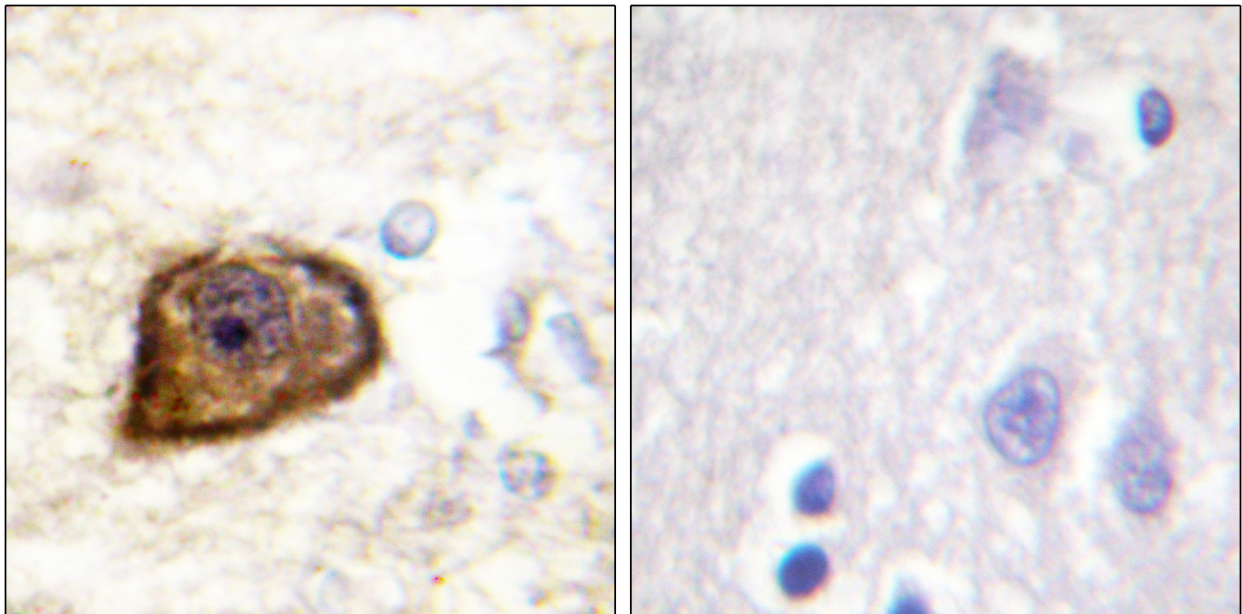
SUPPORT@GENUINBIOTECH.COM
TEL: +1-540-855-7041

ORDERS

SALES@GENUINBIOTECH.COM
FAX: +1-540-855-7041

WWW.GENUINBIOTECH.COM

Validation Data



Immunohistochemistry analysis of paraffin-embedded human brain, using PDGFR beta (Phospho-Tyr1021) Antibody. The picture on the right is blocked with the phospho peptide.