

Anti-Phospho-ACAP1 (S554) Rabbit Polyclonal Antibody



Catalog #: U1719

Aliases

ACAP1; CENTB1; KIAA0050; Arf-GAP with coiled-coil; ANK repeat and PH domain-containing protein 1; Centaurin-beta-1; Cnt-b1

Background

Gene Name: ACAP1

NCBI Gene Entry: [9744](#)

UniProt Entry: [Q15027](#)

Application Information

Molecular Weight: Predicted, 82 kDa; observed, 82 kDa

Clonality: Rabbit polyclonal antibody

Species Reactivity: Human, mouse, rat

Applications Tested: Western blotting (WB), immunohistochemistry (IHC), immunocytochemistry (IC)

Immunogen

A synthesized peptide derived from human Phospho-ACAP1 (Ser554)

Isotype

Rabbit IgG

Storage Buffer

Supplied in PBS containing 50% glycerol, 0.5% BSA and 0.02% sodium azide.

Storage

Store at -20 °C for one year.

Recommended Dilutions

Western Blotting (WB): 1:500-1:2,000

Immunohistochemistry (IHC): 1:100-1:300

Immunocytochemistry (IC): 1:50-1:200

Note: This product is for research use only.

Validation Data

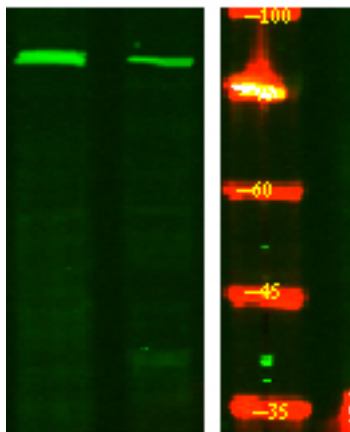
SUPPORT

SUPPORT@GENUINBIOTECH.COM
TEL: +1-540-855-7041

ORDERS

SALES@GENUINBIOTECH.COM
FAX: +1-540-855-7041

WWW.GENUINBIOTECH.COM



Western blotting analysis of HeLa treated or untreated by LPS lysis, using primary antibody at 1:1,000 dilution. Secondary antibody was diluted at 1:10,000