

# Anti-Phospho-IP3R-I (S1764) Rabbit Polyclonal Antibody



**Catalog #: U1727**

## Aliases

ITPR1; INSP3R1; Inositol 1; 4,5-trisphosphate receptor type 1; IP3 receptor isoform 1; IP3R 1; InsP3R1; Type 1 inositol 1,4,5-trisphosphate receptor; Type 1 InsP3 receptor

## Background

Gene Name: ITPR1

NCBI Gene Entry: [3708](#)

UniProt Entry: [Q14643](#)

## Application Information

Molecular Weight: Predicted, 314 kDa; observed, 314 kDa

Clonality: Rabbit polyclonal antibody

Species Reactivity: Human, mouse, rat

Applications Tested: Western blotting (WB), immunohistochemistry (IHC), immunocytochemistry (IC)

## Immunogen

A synthesized peptide derived from human Phospho-IP3R-I (Ser1764)

## Isotype

Rabbit IgG

## Storage Buffer

Supplied in PBS containing 50% glycerol, 0.5% BSA and 0.02% sodium azide.

## Storage

Store at -20 °C for one year.

## Recommended Dilutions

Western Blotting (WB): 1:500-1:2,000

Immunohistochemistry (IHC): 1:100-1:300

Immunocytochemistry (IC): 1:50-1:200

**Note:** This product is for research use only.

## Validation Data

---

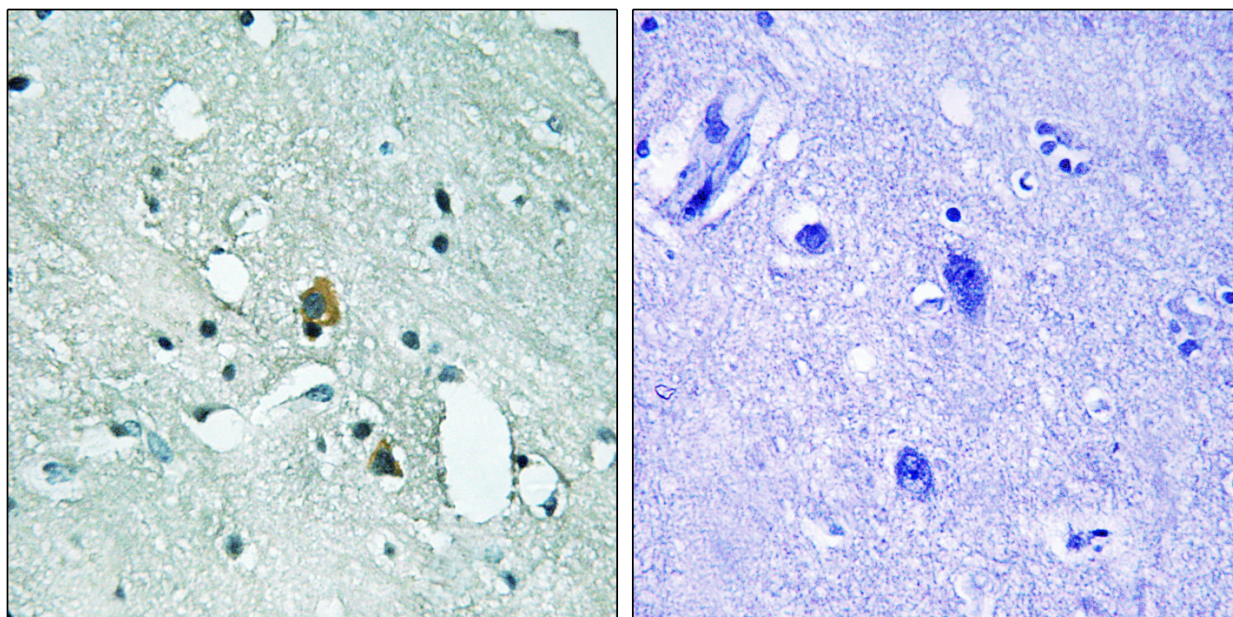
### SUPPORT

SUPPORT@GENUINBIOTECH.COM  
TEL: +1-540-855-7041

### ORDERS

SALES@GENUINBIOTECH.COM  
FAX: +1-540-855-7041

[WWW.GENUINBIOTECH.COM](http://WWW.GENUINBIOTECH.COM)



Immunohistochemistry analysis of paraffin-embedded human brain, using IP3R1 (Phospho-Ser1764) Antibody. The picture on the right is blocked with the phospho peptide.