

Anti-Phospho-Rb (S249) Rabbit Polyclonal Antibody



Catalog #: U1747

Aliases

RB1; Retinoblastoma-associated protein; p105-Rb; pRb; Rb; pp110

Background

Gene Name: RB1

NCBI Gene Entry: [5925](#)

UniProt Entry: [P06400](#)

Application Information

Molecular Weight: Predicted, 106 kDa; observed, 106 kDa

Clonality: Rabbit polyclonal antibody

Species Reactivity: Human, mouse, rat

Applications Tested: Western blotting (WB), immunohistochemistry (IHC)

Immunogen

A synthesized peptide derived from human Phospho-Rb (Ser249)

Isotype

Rabbit IgG

Storage Buffer

Supplied in PBS containing 50% glycerol, 0.5% BSA and 0.02% sodium azide.

Storage

Store at -20 °C for one year.

Recommended Dilutions

Western Blotting (WB): 1:500-1:2,000

Immunohistochemistry-Paraffin (IHC-P): 1:50-1:300

Note: This product is for research use only.

Validation Data

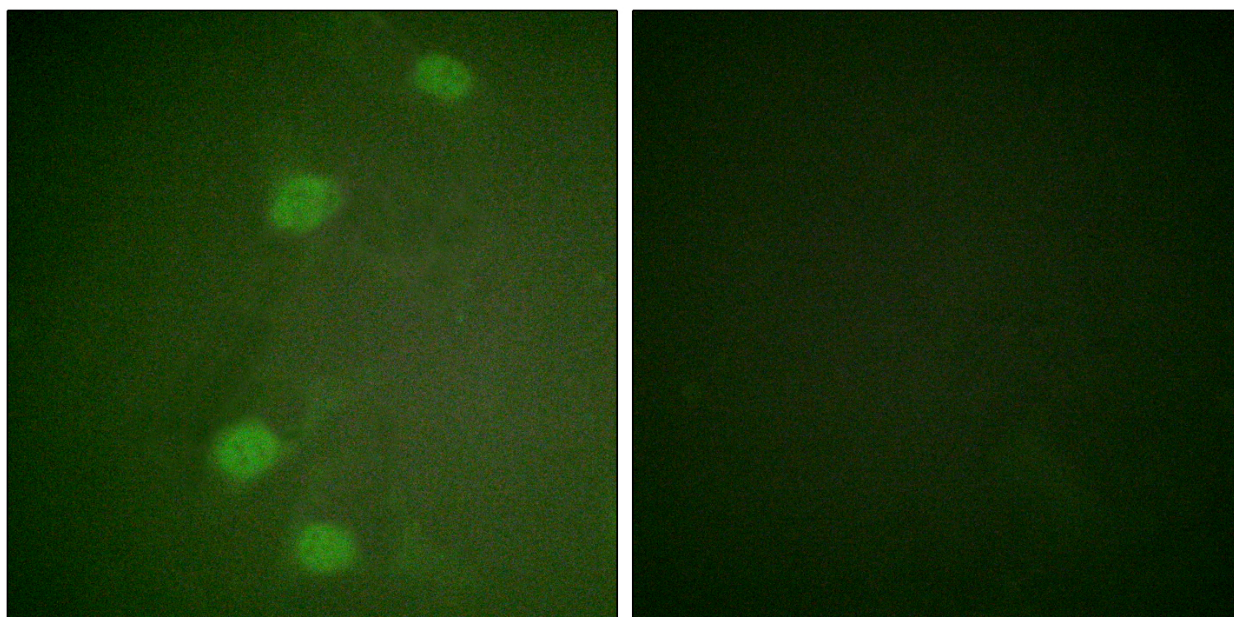
SUPPORT

SUPPORT@GENUINBIOTECH.COM
TEL: +1-540-855-7041

ORDERS

SALES@GENUINBIOTECH.COM
FAX: +1-540-855-7041

WWW.GENUINBIOTECH.COM



Immunofluorescence analysis of HeLa cells, using Retinoblastoma (Phospho-Ser249) Antibody.
The picture on the right is blocked with the phospho peptide.