

# Anti-Phospho-HIRA (T555) Rabbit Polyclonal Antibody



**Catalog #: U1749**

## Aliases

HIRA; DGCR1; HIR; TUPLE1; Protein HIRA; TUP1-like enhancer of split protein 1

## Background

Gene Name: HIRA

NCBI Gene Entry: [7290](#)

UniProt Entry: [P54198](#)

## Application Information

Molecular Weight: Predicted, 112 kDa; observed, 112 kDa

Clonality: Rabbit polyclonal antibody

Species Reactivity: Human, mouse

Applications Tested: Western blotting (WB), immunohistochemistry (IHC), immunocytochemistry (IC)

## Immunogen

A synthesized peptide derived from human Phospho-HIRA (Thr555)

## Isotype

Rabbit IgG

## Storage Buffer

Supplied in PBS containing 50% glycerol, 0.5% BSA and 0.02% sodium azide.

## Storage

Store at -20 °C for one year.

## Recommended Dilutions

Western Blotting (WB): 1:500-1:2,000

Immunohistochemistry (IHC): 1:100-1:300

Immunocytochemistry (IC): 1:200-1:1,000

**Note:** This product is for research use only.

## Validation Data

---

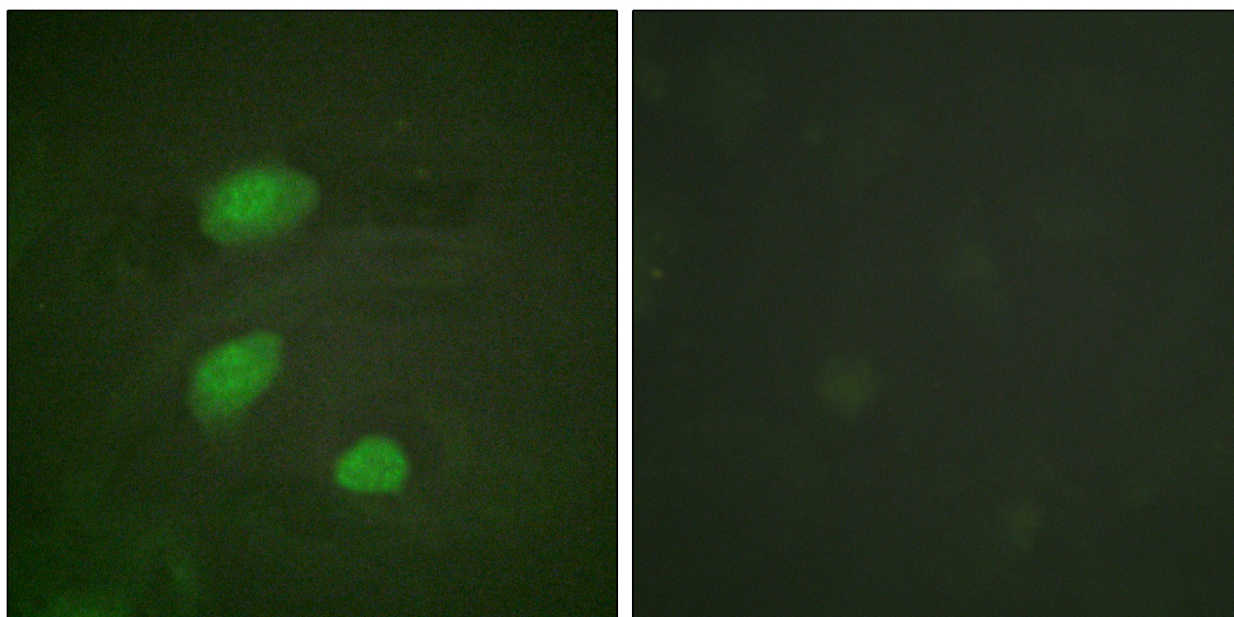
### SUPPORT

SUPPORT@GENUINBIOTECH.COM  
TEL: +1-540-855-7041

### ORDERS

SALES@GENUINBIOTECH.COM  
FAX: +1-540-855-7041

[WWW.GENUINBIOTECH.COM](http://WWW.GENUINBIOTECH.COM)



Immunofluorescence analysis of HeLa cells, using HIRA (Phospho-Thr555) Antibody. The picture on the right is blocked with the phospho peptide.