

Anti-Phospho-c-Abl (Y89) Rabbit Polyclonal Antibody



Catalog #: U1813

Aliases

Tyrosine-protein kinase ABL1 (EC 2.7.10.2) (Abelson murine leukemia viral oncogene homolog 1) (Abelson tyrosine-protein kinase 1) (Proto-oncogene c-Abl) (p150)

Background

Gene Name: ABL1/ABL/JTK7

NCBI Gene Entry: [25](#)

UniProt Entry: [P00519](#)

Application Information

Molecular Weight: Predicted, 123 kDa; observed, 140 kDa

Clonality: Rabbit polyclonal antibody

Species Reactivity: Human, mouse, rat

Applications Tested: Western blotting (WB)

Immunogen

A synthesized peptide derived from human Phospho-c-Abl (Tyr89)

Isotype

Rabbit IgG

Storage Buffer

Supplied in PBS containing 50% glycerol, 0.5% BSA and 0.02% sodium azide.

Storage

Store at -20 °C for one year.

Recommended Dilutions

Western Blotting (WB): 1:1,000-1:2,000

Note: This product is for research use only.

Validation Data

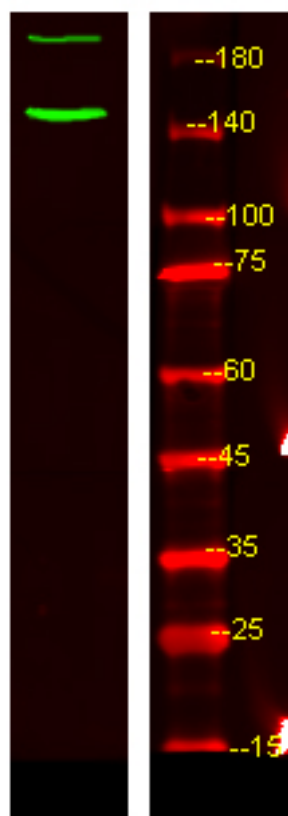
SUPPORT

SUPPORT@GENUINBIOTECH.COM
TEL: +1-540-855-7041

ORDERS

SALES@GENUINBIOTECH.COM
FAX: +1-540-855-7041

WWW.GENUINBIOTECH.COM



Western blotting analysis of HeLa treated or untreated by LPS lysis, using primary antibody at 1:1,000 dilution. Secondary antibody was diluted at 1:10,000