

# Anti-Phospho-c-Kit (Y719) Rabbit Polyclonal Antibody



**Catalog #: U1830**

## Aliases

Mast/stem cell growth factor receptor Kit (SCFR) (EC 2.7.10.1) (Piebald trait protein) (PBT) (Proto-oncogene c-Kit) (Tyrosine-protein kinase Kit) (p145 c-kit) (v-kit Hardy-Zuckerman 4 feline sarcoma viral oncogene homolog) (CD antigen CD117)

## Background

Gene Name: KIT/SCFR

NCBI Gene Entry: [3815](#)

UniProt Entry: [P10721](#)

## Application Information

Molecular Weight: Predicted, 110 kDa; observed, 117 kDa

Clonality: Rabbit polyclonal antibody

Species Reactivity: Human, mouse

Applications Tested: Western blotting (WB)

## Immunogen

A synthesized peptide derived from human Phospho-c-Kit (Tyr719)

## Isotype

Rabbit IgG

## Storage Buffer

Supplied in PBS containing 50% glycerol, 0.5% BSA and 0.02% sodium azide.

## Storage

Store at -20 °C for one year.

## Recommended Dilutions

Western Blotting (WB): 1:1,000-1:2,000

**Note:** This product is for research use only.

## Validation Data

---

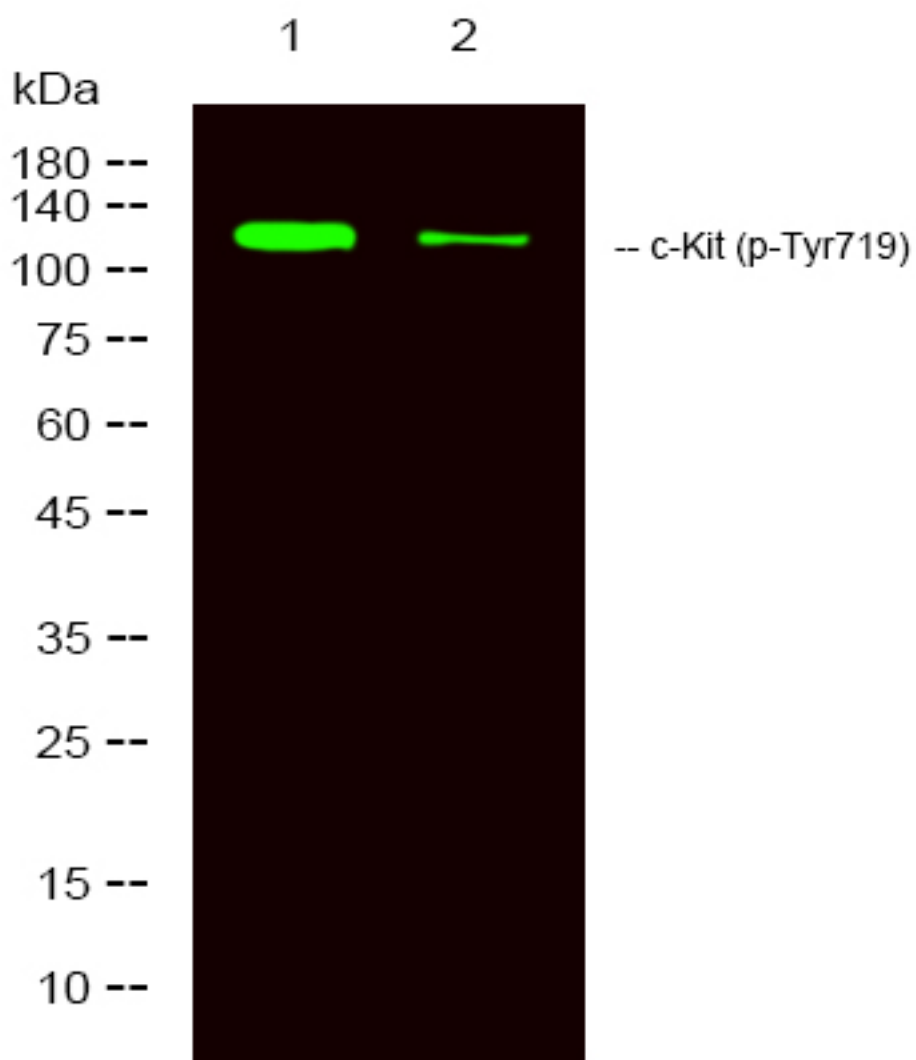
### SUPPORT

SUPPORT@GENUINBIOTECH.COM  
TEL: +1-540-855-7041

### ORDERS

SALES@GENUINBIOTECH.COM  
FAX: +1-540-855-7041

[WWW.GENUINBIOTECH.COM](http://WWW.GENUINBIOTECH.COM)



Western blotting analysis of 1 HeLa, 2 treated with LPS 100ng/mL 20min, using primary antibody at 1:1,000 dilution. Secondary antibody was diluted at 1:10,000