

Anti-Phospho-DBC1 (T454) Rabbit Polyclonal Antibody



Catalog #: U1837

Aliases

DBIRD complex subunit KIAA1967 (Deleted in breast cancer gene 1 protein) (DBC-1) (DBC.1) (p30 DBC)

Background

Gene Name: KIAA1967/DBC1

NCBI Gene Entry: [57805](#)

UniProt Entry: [Q8N163](#)

Application Information

Molecular Weight: Predicted, 103 kDa; observed, 105 kDa

Clonality: Rabbit polyclonal antibody

Species Reactivity: Human, mouse, rat

Applications Tested: Western blotting (WB)

Immunogen

A synthesized peptide derived from human Phospho-DBC1 (Thr454)

Isotype

Rabbit IgG

Storage Buffer

Supplied in PBS containing 50% glycerol, 0.5% BSA and 0.02% sodium azide.

Storage

Store at -20 °C for one year.

Recommended Dilutions

Western Blotting (WB): 1:1,000-1:2,000

Note: This product is for research use only.

Validation Data

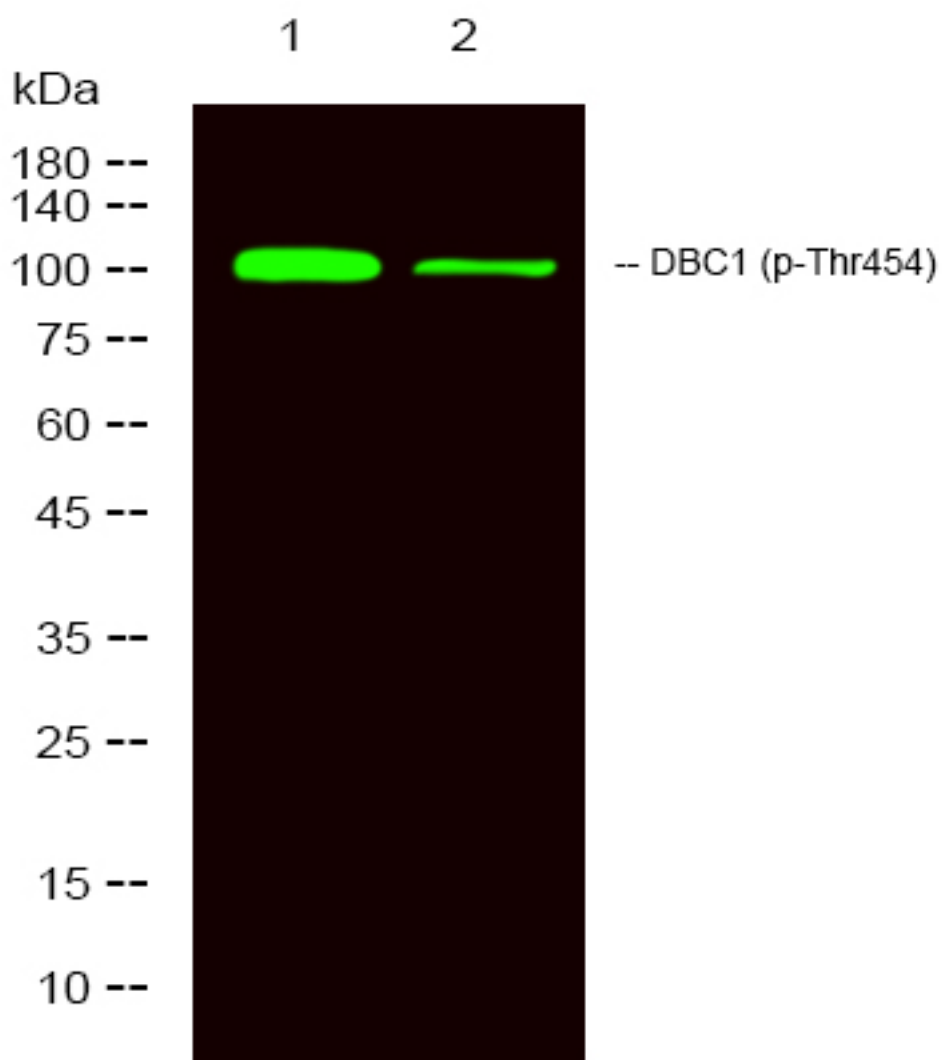
SUPPORT

SUPPORT@GENUINBIOTECH.COM
TEL: +1-540-855-7041

ORDERS

SALES@GENUINBIOTECH.COM
FAX: +1-540-855-7041

WWW.GENUINBIOTECH.COM



Western blotting analysis of 1 MCF-7 treated with LPS, 2 MCF7, using primary antibody at 1:1,000 dilution. Secondary antibody was diluted at 1:10,000