

Anti-Phospho-FGF Receptor 1 (Y653/654) Rabbit Polyclonal Antibody



Catalog #: U1856

Aliases

Fibroblast growth factor receptor 1 (FGFR-1) (EC 2.7.10.1) (Basic fibroblast growth factor receptor 1) (BFGFR) (bFGF-R-1) (Fms-like tyrosine kinase 2) (FLT-2) (N-sam) (Proto-oncogene c-Fgr) (CD antigen CD331)

Background

Gene Name: FGFR1/BFGFR/CEK/FGFBR/FLG/FLT2/HBGFR

NCBI Gene Entry: [2260](#)

UniProt Entry: [P11362](#)

Application Information

Molecular Weight: Predicted, 92 kDa; observed, 90 kDa

Clonality: Rabbit polyclonal antibody

Species Reactivity: Human, mouse, rat

Applications Tested: Western blotting (WB)

Immunogen

A synthesized peptide derived from human Phospho-FGF Receptor 1 (Tyr653/654)

Isotype

Rabbit IgG

Storage Buffer

Supplied in PBS containing 50% glycerol, 0.5% BSA and 0.02% sodium azide.

Storage

Store at -20 °C for one year.

Recommended Dilutions

Western Blotting (WB): 1:1,000-1:2,000

Note: This product is for research use only.

Validation Data

SUPPORT

SUPPORT@GENUINBIOTECH.COM
TEL: +1-540-855-7041

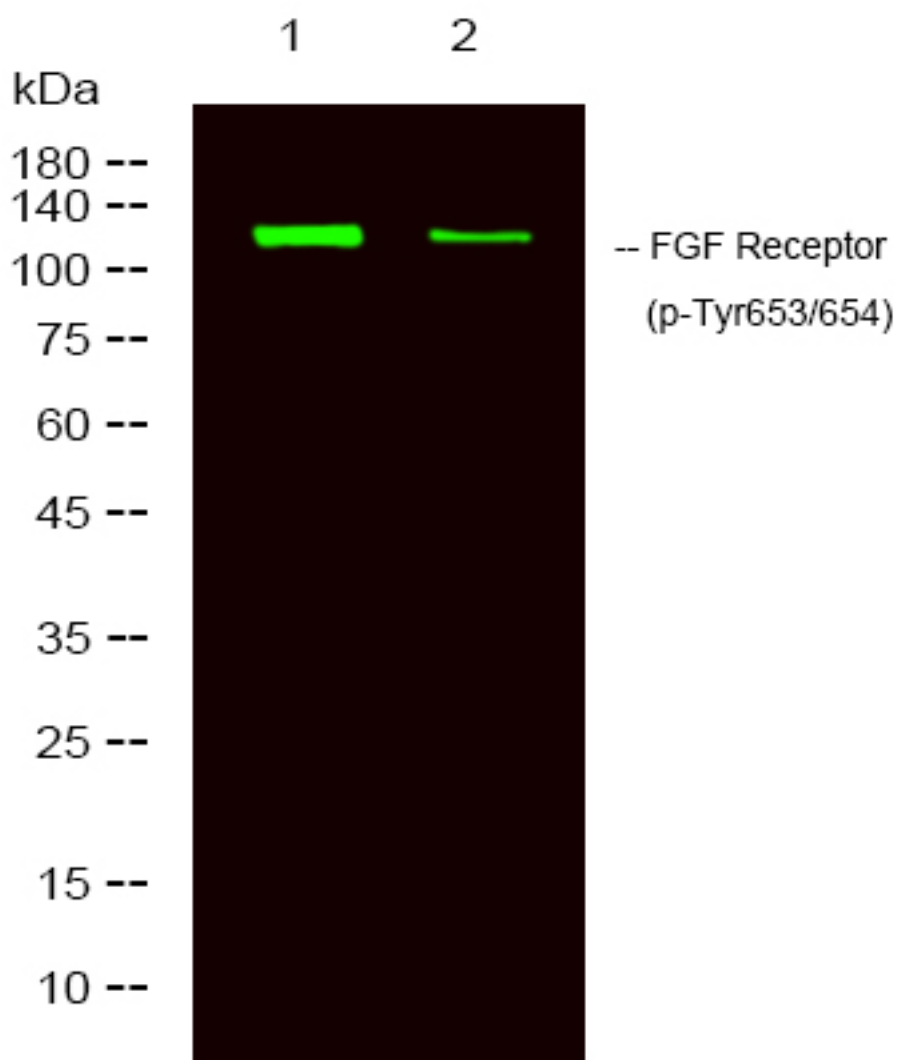
ORDERS

SALES@GENUINBIOTECH.COM
FAX: +1-540-855-7041

WWW.GENUINBIOTECH.COM

Anti-Phospho-FGF Receptor 1 (Y653/654) Rabbit Polyclonal Antibody

PAGE 2



Western blotting analysis of 1 HeLa, 2 treated with LPS 100ng/mL 20min, using primary antibody at 1:1,000 dilution. Secondary antibody was diluted at 1:10,000

SUPPORT

SUPPORT@GENUINBIOTECH.COM
TEL: +1-540-855-7041

ORDERS

SALES@GENUINBIOTECH.COM
FAX: +1-540-855-7041

WWW.GENUINBIOTECH.COM