

# Anti-Phospho-IGF1 Receptor (Y980) Rabbit Polyclonal Antibody



**Catalog #: U1882**

## Aliases

Insulin-like growth factor 1 receptor (EC 2.7.10.1) (Insulin-like growth factor I receptor) (IGF-I receptor) (CD antigen CD221) [Cleaved into: Insulin-like growth factor 1 receptor alpha chain; Insulin-like growth factor 1 receptor beta chain]

## Background

Gene Name: IGF1R

NCBI Gene Entry: [3480](#)

UniProt Entry: [P08069](#)

## Application Information

Molecular Weight: Predicted, 155 kDa; observed, 155kDa

Clonality: Rabbit polyclonal antibody

Species Reactivity: Human, mouse, rat

Applications Tested: Western blotting (WB)

## Immunogen

A synthesized peptide derived from human Phospho-IGF-I Receptor  $\beta$  (Tyr980)

## Isotype

Rabbit IgG

## Storage Buffer

Supplied in PBS containing 50% glycerol, 0.5% BSA and 0.02% sodium azide.

## Storage

Store at -20 °C for one year.

## Recommended Dilutions

Western Blotting (WB): 1:1,000-1:2,000

**Note:** This product is for research use only.

## Validation Data

---

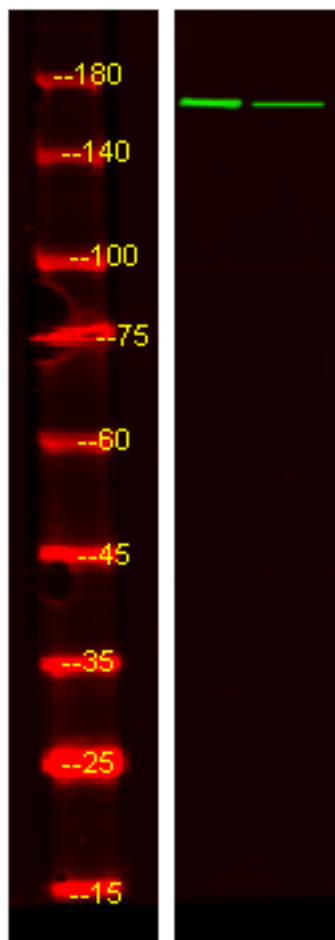
### SUPPORT

SUPPORT@GENUINBIOTECH.COM  
TEL: +1-540-855-7041

### ORDERS

SALES@GENUINBIOTECH.COM  
FAX: +1-540-855-7041

[WWW.GENUINBIOTECH.COM](http://WWW.GENUINBIOTECH.COM)



Western blotting analysis of HeLa treated or untreated by LPS lysis, using primary antibody at 1:1,000 dilution. Secondary antibody was diluted at 1:10,000