

Anti-Phospho-Mcl-1 (T163) Rabbit Polyclonal Antibody



Catalog #: U1913

Aliases

Induced myeloid leukemia cell differentiation protein Mcl-1 (Bcl-2-like protein 3) (Bcl2-L-3) (Bcl-2-related protein EAT/mcl1) (mcl1/EAT)

Background

Gene Name: MCL1/BCL2L3

NCBI Gene Entry: [4170](#)

UniProt Entry: [Q07820](#)

Application Information

Molecular Weight: Predicted, 37 kDa; observed, 40,39 kDa

Clonality: Rabbit polyclonal antibody

Species Reactivity: Human, mouse, rat

Applications Tested: Western blotting (WB), immunohistochemistry (IHC)

Immunogen

A synthesized peptide derived from human Phospho-Mcl-1 (Thr163)

Isotype

Rabbit IgG

Storage Buffer

Supplied in PBS containing 50% glycerol, 0.5% BSA and 0.02% sodium azide.

Storage

Store at -20 °C for one year.

Recommended Dilutions

Western Blotting (WB): 1:500-1:2,000

Immunohistochemistry-Paraffin (IHC-P): 1:50-1:300

Note: This product is for research use only.

Validation Data

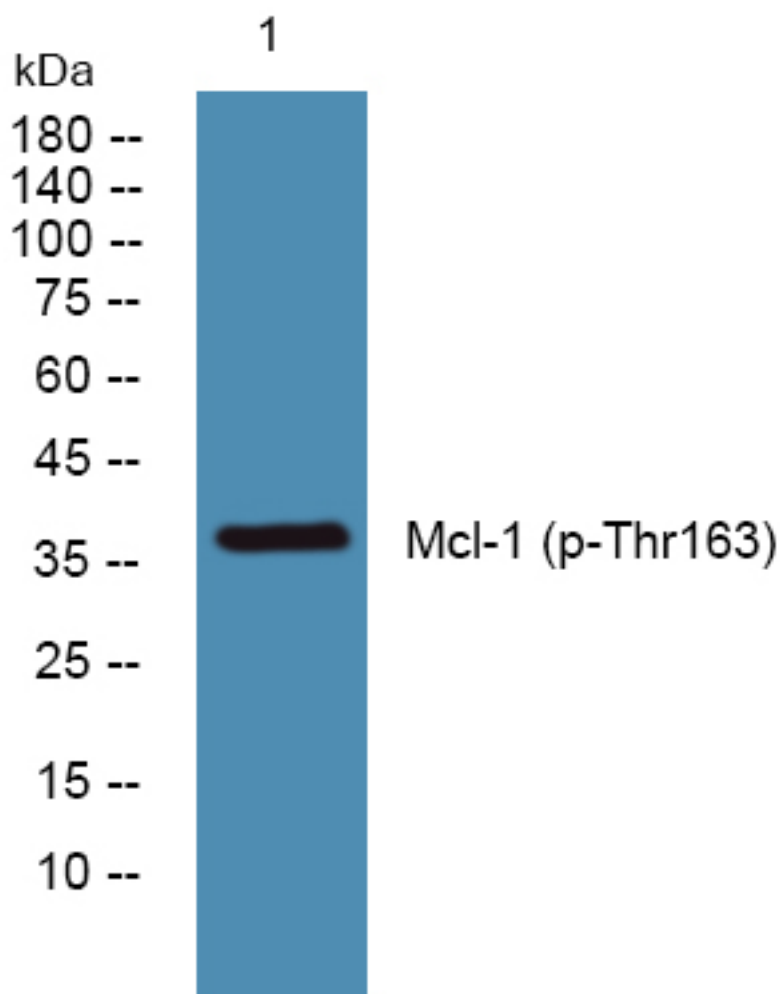
SUPPORT

SUPPORT@GENUINBIOTECH.COM
TEL: +1-540-855-7041

ORDERS

SALES@GENUINBIOTECH.COM
FAX: +1-540-855-7041

WWW.GENUINBIOTECH.COM



Western blotting analysis of lysates from SH-SY5Y cells, primary antibody was diluted at 1:1,000, 4°over night