

Anti-Phospho-MCM2 (S139) Rabbit Polyclonal Antibody



Catalog #: U1914

Aliases

DNA replication licensing factor MCM2 (EC 3.6.4.12) (Minichromosome maintenance protein 2 homolog) (Nuclear protein BM28)

Background

Gene Name: MCM2/BM28/CCNL1/CDCL1/KIAA0030

NCBI Gene Entry: [4171](#)

UniProt Entry: [P49736](#)

Application Information

Molecular Weight: Predicted, 102 kDa; observed, 120 kDa

Clonality: Rabbit polyclonal antibody

Species Reactivity: Human, mouse, rat

Applications Tested: Western blotting (WB), immunohistochemistry (IHC)

Immunogen

A synthesized peptide derived from human Phospho-MCM2 (Ser139)

Isotype

Rabbit IgG

Storage Buffer

Supplied in PBS containing 50% glycerol, 0.5% BSA and 0.02% sodium azide.

Storage

Store at -20 °C for one year.

Recommended Dilutions

Western Blotting (WB): 1:500-1:2,000

Immunohistochemistry-Paraffin (IHC-P): 1:50-1:300

Note: This product is for research use only.

Validation Data

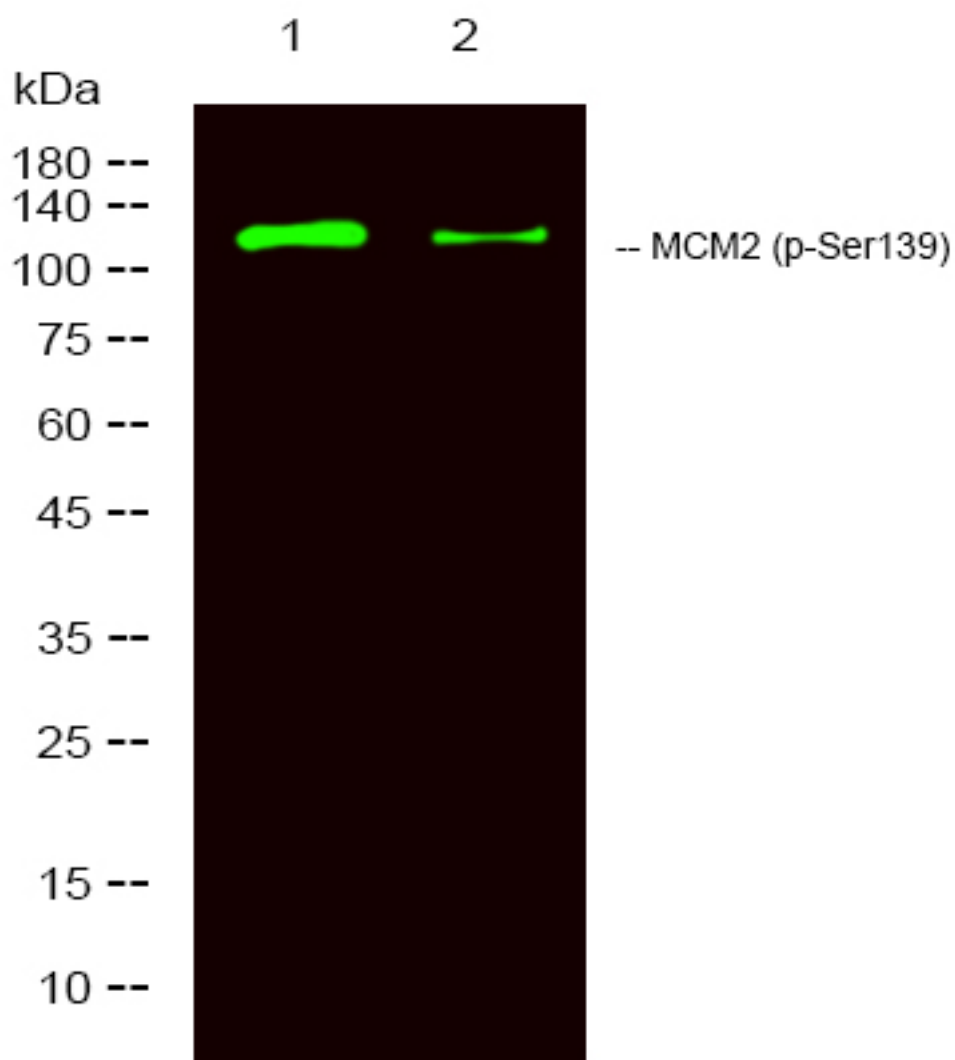
SUPPORT

SUPPORT@GENUINBIOTECH.COM
TEL: +1-540-855-7041

ORDERS

SALES@GENUINBIOTECH.COM
FAX: +1-540-855-7041

WWW.GENUINBIOTECH.COM



Western blotting analysis of 1 K562 treated with LPS, 2 K562, using primary antibody at 1:1,000 dilution. Secondary antibody was diluted at 1:10,000