

# Anti-Phospho-M-CSF Receptor (Y923) Rabbit Polyclonal Antibody



**Catalog #: U1917**

## Aliases

Macrophage colony-stimulating factor 1 receptor (CSF-1 receptor) (CSF-1-R) (CSF-1R) (M-CSF-R) (EC 2.7.10.1) (Proto-oncogene c-Fms) (CD antigen CD115)

## Background

Gene Name: CSF1R/FMS

NCBI Gene Entry: [1436](#)

UniProt Entry: [P07333](#)

## Application Information

Molecular Weight: Predicted, 108 kDa; observed, 130-170 kDa

Clonality: Rabbit polyclonal antibody

Species Reactivity: Human, mouse, rat

Applications Tested: Western blotting (WB), immunohistochemistry (IHC)

## Immunogen

A synthesized peptide derived from human Phospho-M-CSF Receptor (Tyr923)

## Isotype

Rabbit IgG

## Storage Buffer

Supplied in PBS containing 50% glycerol, 0.5% BSA and 0.02% sodium azide.

## Storage

Store at -20 °C for one year.

## Recommended Dilutions

Western Blotting (WB): 1:500-1:2,000

Immunohistochemistry-Paraffin (IHC-P): 1:50-1:300

**Note:** This product is for research use only.

## Validation Data

---

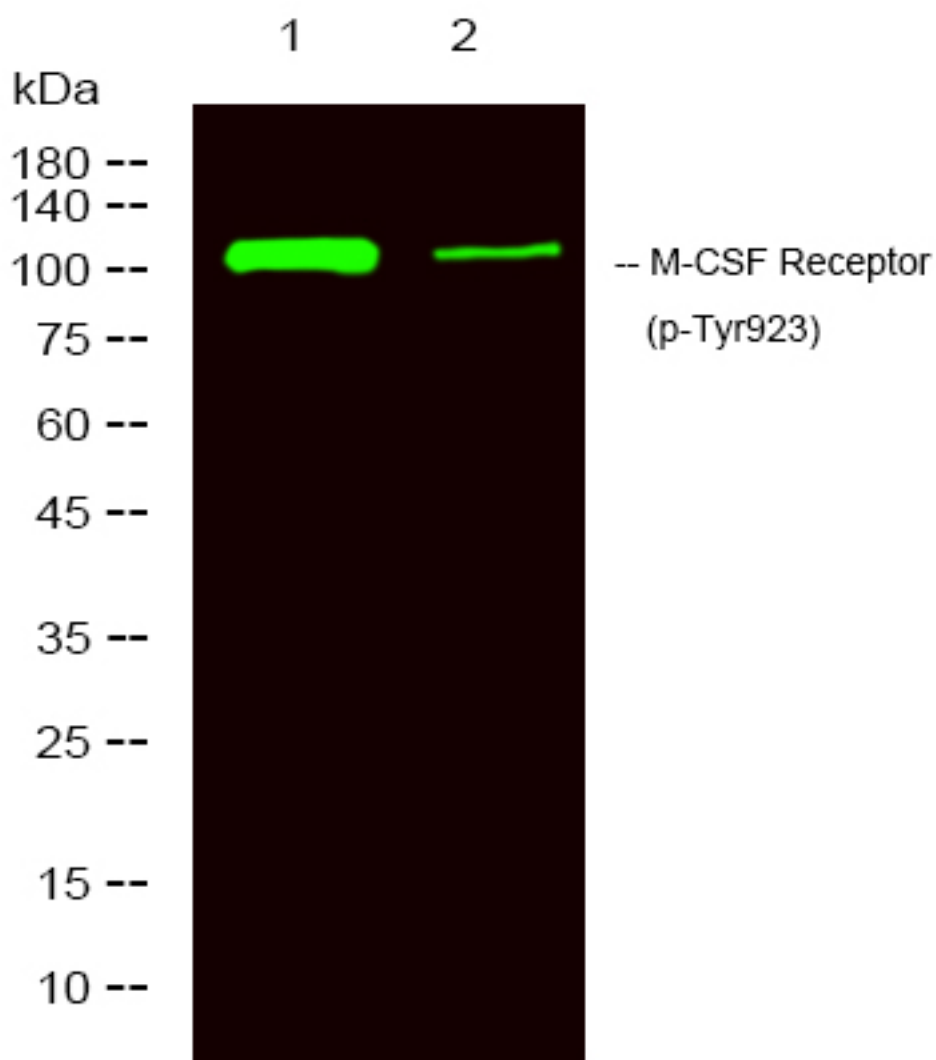
### SUPPORT

SUPPORT@GENUINBIOTECH.COM  
TEL: +1-540-855-7041

### ORDERS

SALES@GENUINBIOTECH.COM  
FAX: +1-540-855-7041

[WWW.GENUINBIOTECH.COM](http://WWW.GENUINBIOTECH.COM)



Western blotting analysis of 1 HeLa, 2 treated with LPS 100ng/mL 20min, using primary antibody at 1:1,000 dilution. Secondary antibody was diluted at 1:10,000