

Anti-Phospho-Mre11 (S676) Rabbit Polyclonal Antibody



Catalog #: U1923

Aliases

Double-strand break repair protein MRE11A (Meiotic recombination 11 homolog 1) (MRE11 homolog 1) (Meiotic recombination 11 homolog A) (MRE11 homolog A)

Background

Gene Name: MRE11A/HNGS1/MRE11

NCBI Gene Entry: [4361](#)

UniProt Entry: [P49959](#)

Application Information

Molecular Weight: Predicted, 81 kDa; observed, 80 kDa

Clonality: Rabbit polyclonal antibody

Species Reactivity: Human, mouse, rat

Applications Tested: Western blotting (WB), immunohistochemistry (IHC)

Immunogen

A synthesized peptide derived from human Phospho-Mre11 (Ser676)

Isotype

Rabbit IgG

Storage Buffer

Supplied in PBS containing 50% glycerol, 0.5% BSA and 0.02% sodium azide.

Storage

Store at -20 °C for one year.

Recommended Dilutions

Western Blotting (WB): 1:500-1:2,000

Immunohistochemistry-Paraffin (IHC-P): 1:50-1:300

Note: This product is for research use only.

Validation Data

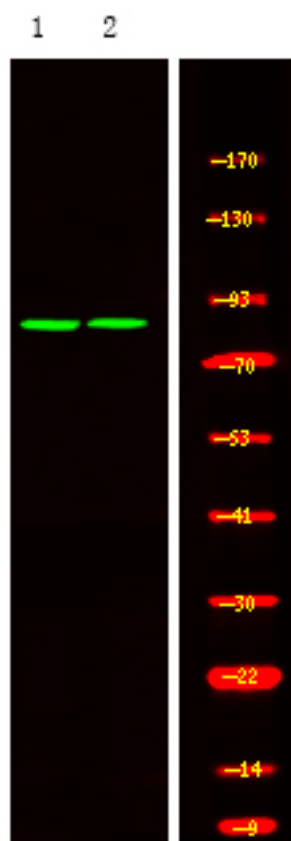
SUPPORT

SUPPORT@GENUINBIOTECH.COM
TEL: +1-540-855-7041

ORDERS

SALES@GENUINBIOTECH.COM
FAX: +1-540-855-7041

WWW.GENUINBIOTECH.COM



Western blotting analysis of HeLa A431 cell ,using primary antibody at 1:1,000 dilution.
Secondary antibody was diluted at 1:10,000