

Anti-Phospho-NF- κ B2 p100 (S866/870) Rabbit Polyclonal Antibody



Catalog #: U1932

Aliases

Nuclear factor NF-kappa-B p100 subunit (DNA-binding factor KBF2) (H2TF1) (Lymphocyte translocation chromosome 10 protein) (Nuclear factor of kappa light polypeptide gene enhancer in B-cells 2) (Oncogene Lyt-10) (Lyt10) [Cleaved into: Nuclear factor NF-kappa-B p52 subunit]

Background

Gene Name: NFKB2/LYT10

NCBI Gene Entry: [4791](#)

UniProt Entry: [Q00653](#)

Application Information

Molecular Weight: Predicted, 97 kDa; observed, 100 kDa

Clonality: Rabbit polyclonal antibody

Species Reactivity: Human, mouse

Applications Tested: Western blotting (WB)

Immunogen

A synthesized peptide derived from human Phospho-NF- κ B2 p100 (Ser866/870)

Isotype

Rabbit IgG

Storage Buffer

Supplied in PBS containing 50% glycerol, 0.5% BSA and 0.02% sodium azide.

Storage

Store at -20 °C for one year.

Recommended Dilutions

Western Blotting (WB): 1:1,000-1:2,000

Note: This product is for research use only.

Validation Data

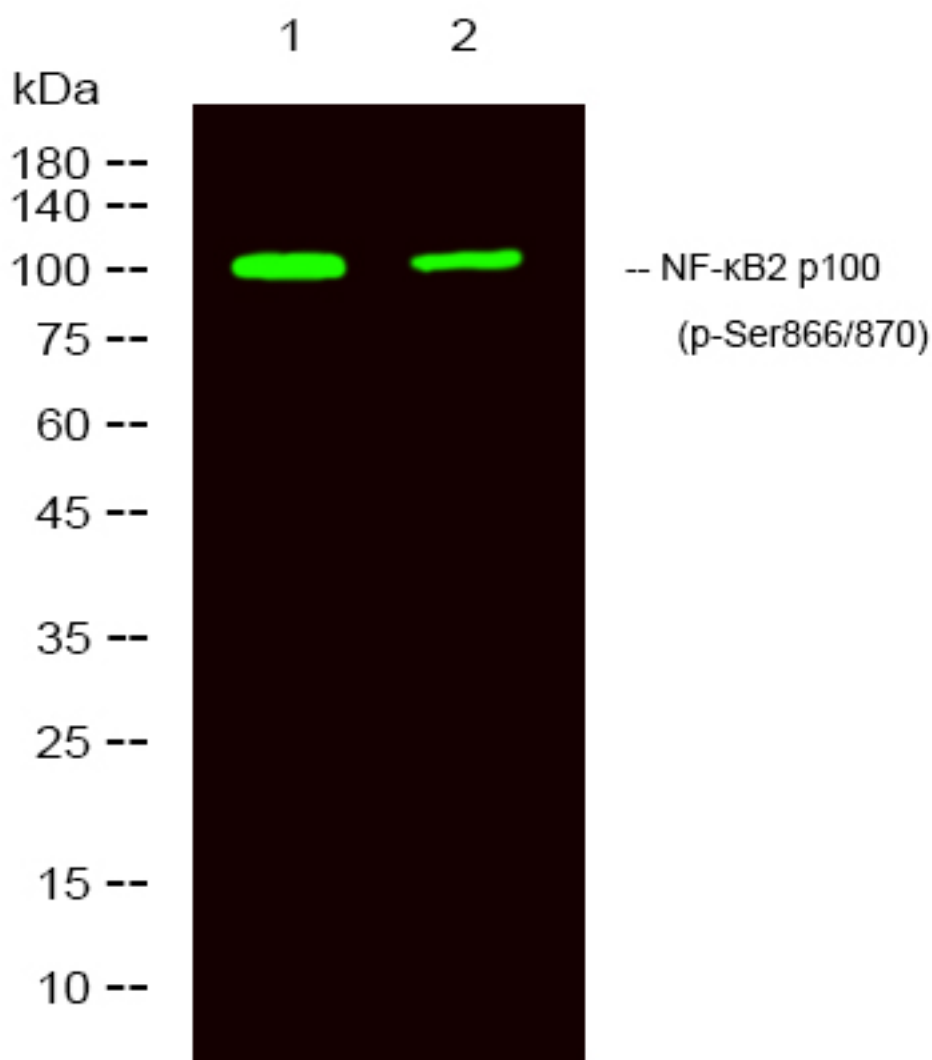
SUPPORT

SUPPORT@GENUINBIOTECH.COM
TEL: +1-540-855-7041

ORDERS

SALES@GENUINBIOTECH.COM
FAX: +1-540-855-7041

WWW.GENUINBIOTECH.COM



Western blotting analysis of 1 MCF-7 treated with LPS, 2 MCF7, using primary antibody at 1:1,000 dilution. Secondary antibody was diluted at 1:10,000