

Anti-Phospho-NPM (S4) Rabbit Polyclonal Antibody



Catalog #: U1933

Aliases

Nucleophosmin (NPM) (Nucleolar phosphoprotein B23) (Nucleolar protein NO38) (Numatrin)

Background

Gene Name: NPM1/NPM

NCBI Gene Entry: [4869](#)

UniProt Entry: [P06748](#)

Application Information

Molecular Weight: Predicted, 33 kDa; observed, 37 kDa

Clonality: Rabbit polyclonal antibody

Species Reactivity: Human, mouse, rat

Applications Tested: Western blotting (WB)

Immunogen

A synthesized peptide derived from human Phospho-NPM (Ser4)

Isotype

Rabbit IgG

Storage Buffer

Supplied in PBS containing 50% glycerol, 0.5% BSA and 0.02% sodium azide.

Storage

Store at -20 °C for one year.

Recommended Dilutions

Western Blotting (WB): 1:1,000-1:2,000

Note: This product is for research use only.

Validation Data

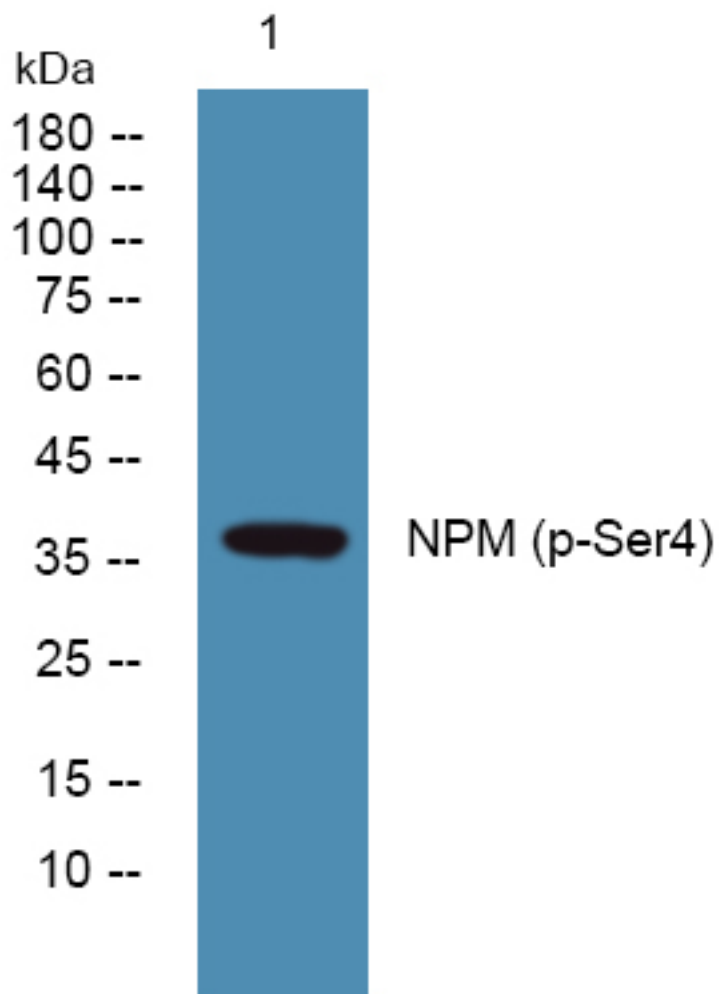
SUPPORT

SUPPORT@GENUINBIOTECH.COM
TEL: +1-540-855-7041

ORDERS

SALES@GENUINBIOTECH.COM
FAX: +1-540-855-7041

WWW.GENUINBIOTECH.COM



Western blotting analysis of lysates from KB cells, primary antibody was diluted at 1:1,000, 4°over night