

# Anti-Phospho-PDGF Receptor $\alpha$ (Y1018) Rabbit Polyclonal Antibody



**Catalog #: U1943**

## Aliases

Platelet-derived growth factor receptor alpha (PDGF-R-alpha) (PDGFR-alpha) (EC 2.7.10.1) (Alpha platelet-derived growth factor receptor) (Alpha-type platelet-derived growth factor receptor) (CD140 antigen-like family member A) (CD140a antigen) (Platelet-derived growth factor alpha receptor) (Platelet-derived growth factor receptor 2) (PDGFR-2) (CD antigen CD140a)

## Background

Gene Name: PDGFRA/PDGFR2/RHEPDGFRA

NCBI Gene Entry: [5156](#)

UniProt Entry: [P16234](#)

## Application Information

Molecular Weight: Predicted, 123 kDa; observed, 180 kDa

Clonality: Rabbit polyclonal antibody

Species Reactivity: Human, mouse

Applications Tested: Western blotting (WB), immunohistochemistry (IHC)

## Immunogen

A synthesized peptide derived from human Phospho-PDGF Receptor  $\alpha$  (Tyr1018)

## Isotype

Rabbit IgG

## Storage Buffer

Supplied in PBS containing 50% glycerol, 0.5% BSA and 0.02% sodium azide.

## Storage

Store at -20 °C for one year.

## Recommended Dilutions

Western Blotting (WB): 1:500-1:2,000

Immunohistochemistry-Paraffin (IHC-P): 1:50-1:300

**Note:** This product is for research use only.

---

### SUPPORT

SUPPORT@GENUINBIOTECH.COM  
TEL: +1-540-855-7041

### ORDERS

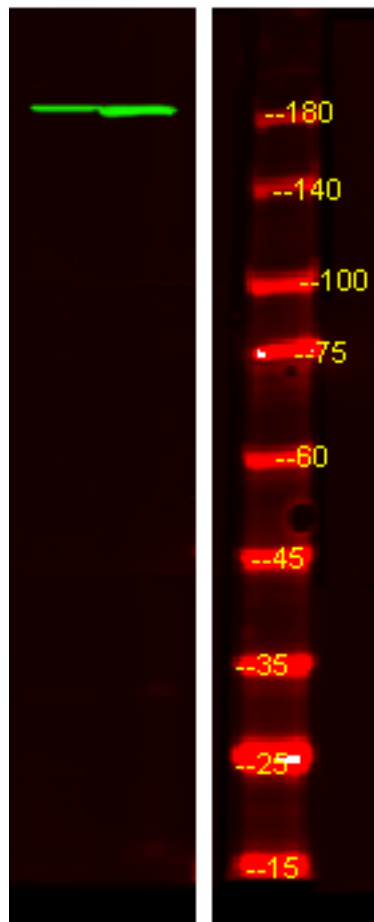
SALES@GENUINBIOTECH.COM  
FAX: +1-540-855-7041

[WWW.GENUINBIOTECH.COM](http://WWW.GENUINBIOTECH.COM)

# Anti-Phospho-PDGF Receptor $\alpha$ (Y1018) Rabbit Polyclonal Antibody

PAGE 2

## Validation Data



Western blotting analysis of HeLa treated or untreated by LPS lysis, using primary antibody at 1:1,000 dilution. Secondary antibody was diluted at 1:10,000

### SUPPORT

SUPPORT@GENUINBIOTECH.COM  
TEL: +1-540-855-7041

### ORDERS

SALES@GENUINBIOTECH.COM  
FAX: +1-540-855-7041

[WWW.GENUINBIOTECH.COM](http://WWW.GENUINBIOTECH.COM)