

Anti-Phospho-PRK1 (T774)/PRK2 (T816) Rabbit Polyclonal Antibody



Catalog #: U1954

Aliases

Serine/threonine-protein kinase N1 (EC 2.7.11.13) (Protease-activated kinase 1) (PAK-1) (Protein kinase C-like 1) (Protein kinase C-like PKN) (Protein kinase PKN-alpha) (Protein-kinase C-related kinase 1) (Serine-threonine protein kinase N)

Background

Gene Name: PKN1

NCBI Gene Entry: [5585](#)

UniProt Entry: [Q16512](#)

Application Information

Molecular Weight: Predicted, 104 kDa; observed, 103 kDa

Clonality: Rabbit polyclonal antibody

Species Reactivity: Human, mouse, rat

Applications Tested: Western blotting (WB), immunohistochemistry (IHC)

Immunogen

A synthesized peptide derived from human Phospho-PRK1 (Thr774)/PRK2 (Thr816)

Isotype

Rabbit IgG

Storage Buffer

Supplied in PBS containing 50% glycerol, 0.5% BSA and 0.02% sodium azide.

Storage

Store at -20 °C for one year.

Recommended Dilutions

Western Blotting (WB): 1:500-1:2,000

Immunohistochemistry-Paraffin (IHC-P): 1:50-1:300

Note: This product is for research use only.

Validation Data

SUPPORT

SUPPORT@GENUINBIOTECH.COM
TEL: +1-540-855-7041

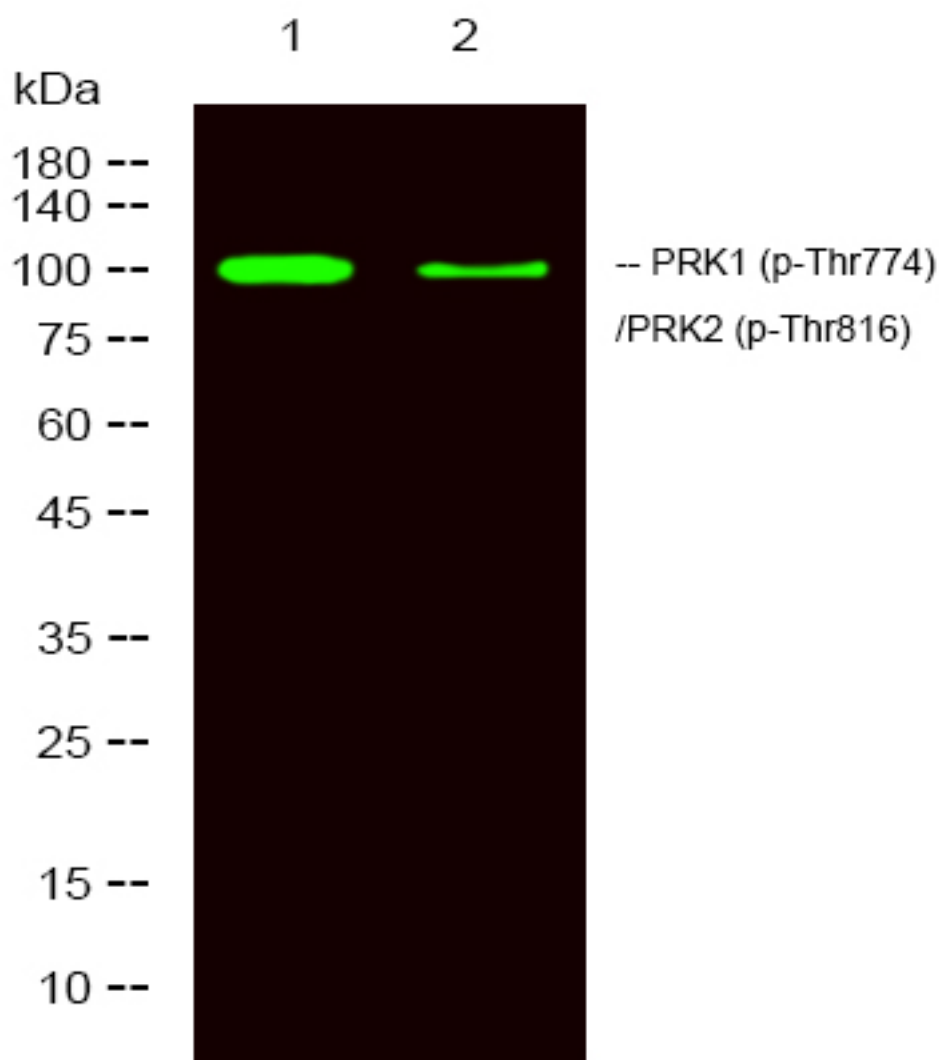
ORDERS

SALES@GENUINBIOTECH.COM
FAX: +1-540-855-7041

WWW.GENUINBIOTECH.COM

**Anti-Phospho-PRK1 (T774)/PRK2 (T816)
Rabbit Polyclonal Antibody**

PAGE 2



Western blotting analysis of Hela treated or untreated by LPS lysis, using primary antibody at 1:1,000 dilution. Secondary antibody was diluted at 1:10,000

SUPPORT

SUPPORT@GENUINBIOTECH.COM
TEL: +1-540-855-7041

ORDERS

SALES@GENUINBIOTECH.COM
FAX: +1-540-855-7041

WWW.GENUINBIOTECH.COM