

Anti-Phospho- β -Catenin (S675) Rabbit Polyclonal Antibody



Catalog #: U2044

Aliases

CTNNB1; CTNNB; OK/SW-cl.35; Catenin beta-1; Beta-catenin

Background

Gene Name: CTNNB1/CTNNB/OK/SW-cl.35/PRO2286

NCBI Gene Entry: [1499](#)

UniProt Entry: [P35222](#)

Application Information

Molecular Weight: Predicted, 85 kDa; observed, 92 kDa

Clonality: Rabbit polyclonal antibody

Species Reactivity: Human, mouse, rat

Applications Tested: Western blotting (WB)

Immunogen

A synthesized peptide derived from human Phospho- β -Catenin (Ser675)

Isotype

Rabbit IgG

Storage Buffer

Supplied in PBS containing 50% glycerol, 0.5% BSA and 0.02% sodium azide.

Storage

Store at -20 °C for one year.

Recommended Dilutions

Western Blotting (WB): 1:1,000-1:2,000

Note: This product is for research use only.

Validation Data

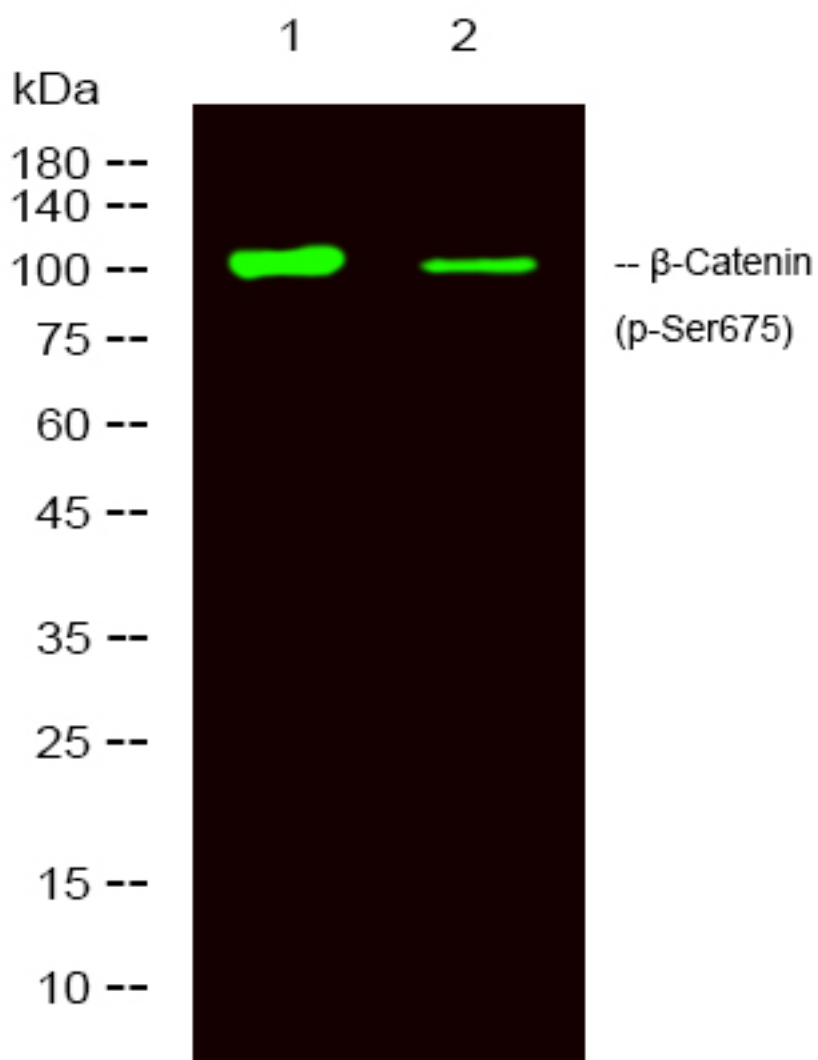
SUPPORT

SUPPORT@GENUINBIOTECH.COM
TEL: +1-540-855-7041

ORDERS

SALES@GENUINBIOTECH.COM
FAX: +1-540-855-7041

WWW.GENUINBIOTECH.COM



Western blotting analysis of 1 HeLa, 2 treated with LPS 100ng/mL 20min, using primary antibody at 1:1,000 dilution. Secondary antibody was diluted at 1:10,000