

# Anti-Phospho-BACE (S498) Rabbit Polyclonal Antibody



**Catalog #: U2045**

## Aliases

Beta-secretase 1 (EC 3.4.23.46;Aspartyl protease 2;ASP2;Asp 2;Beta-site amyloid precursor protein cleaving enzyme 1;Beta-site APP cleaving enzyme 1;Memapsin-2;Membrane-associated aspartic protease 2)

## Background

Gene Name: BACE1/BACE/KIAA1149

NCBI Gene Entry: [23621](#)

UniProt Entry: [P56817](#)

## Application Information

Molecular Weight: Predicted, 56 kDa; observed, 73 kDa

Clonality: Rabbit polyclonal antibody

Species Reactivity: Human, mouse, rat

Applications Tested: Western blotting (WB)

## Immunogen

A synthesized peptide derived from human Phospho-BACE (Ser498)

## Isotype

Rabbit IgG

## Storage Buffer

Supplied in PBS containing 50% glycerol, 0.5% BSA and 0.02% sodium azide.

## Storage

Store at -20 °C for one year.

## Recommended Dilutions

Western Blotting (WB): 1:1,000-1:2,000

**Note:** This product is for research use only.

## Validation Data

---

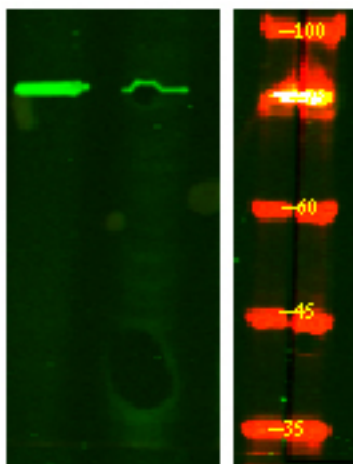
### SUPPORT

SUPPORT@GENUINBIOTECH.COM  
TEL: +1-540-855-7041

### ORDERS

SALES@GENUINBIOTECH.COM  
FAX: +1-540-855-7041

[WWW.GENUINBIOTECH.COM](http://WWW.GENUINBIOTECH.COM)



Western blotting analysis of HeLa treated or untreated by LPS lysis, using primary antibody at 1:1,000 dilution. Secondary antibody was diluted at 1:10,000