

Anti-Phospho-Smad1 (S214) Rabbit Polyclonal Antibody



Catalog #: U2061

Aliases

Mothers against decapentaplegic homolog 1 (MAD homolog 1; Mothers against DPP homolog 1; JV4-1; Mad-related protein 1; SMAD family member 1; SMAD 1; Smad1; hSMAD1; Transforming growth factor-beta-signaling protein 1; BSP-1)

Background

Gene Name: SMAD1/BSP1/MADH1/MADR1

NCBI Gene Entry: [4086](#)

UniProt Entry: [Q15797](#)

Application Information

Molecular Weight: Predicted, 52 kDa; observed, 51 kDa

Clonality: Rabbit polyclonal antibody

Species Reactivity: Human, mouse, rat

Applications Tested: Western blotting (WB), immunohistochemistry (IHC)

Immunogen

A synthesized peptide derived from human Phospho-Smad1 (Ser214)

Isotype

Rabbit IgG

Storage Buffer

Supplied in PBS containing 50% glycerol, 0.5% BSA and 0.02% sodium azide.

Storage

Store at -20 °C for one year.

Recommended Dilutions

Western Blotting (WB): 1:500-1:2,000

Immunohistochemistry-Paraffin (IHC-P): 1:50-1:300

Note: This product is for research use only.

Validation Data

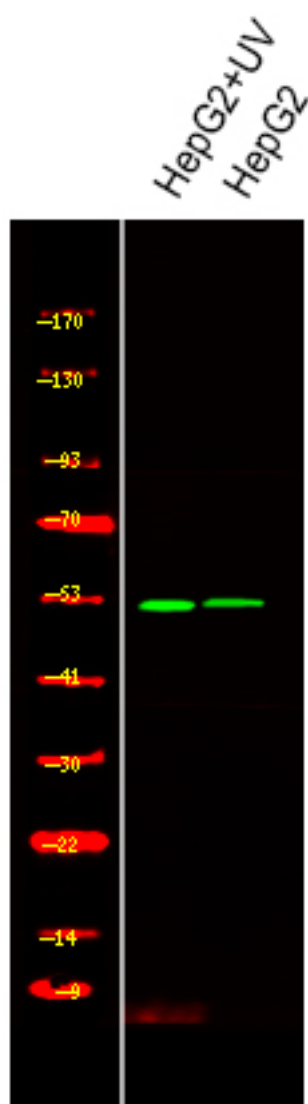
SUPPORT

SUPPORT@GENUINBIOTECH.COM
TEL: +1-540-855-7041

ORDERS

SALES@GENUINBIOTECH.COM
FAX: +1-540-855-7041

WWW.GENUINBIOTECH.COM



Western blotting analysis of various,using primary antibody at 1:1,000 dilution. Secondary antibody was diluted at 1:10,000