

Anti-Phospho-Smad2 (S245) Rabbit Polyclonal Antibody



Catalog #: U2063

Aliases

Mothers against decapentaplegic homolog 2 (MAD homolog 2; Mothers against DPP homolog 2; JV18-1; Mad-related protein 2; hMAD-2; SMAD family member 2; SMAD 2; Smad2; hSMAD2)

Background

Gene Name: SMAD2/MADH2/MADR2

NCBI Gene Entry: [4087](#)

UniProt Entry: [Q15796](#)

Application Information

Molecular Weight: Predicted, 52 kDa; observed, 55 kDa

Clonality: Rabbit polyclonal antibody

Species Reactivity: Human, mouse, rat

Applications Tested: Western blotting (WB), immunohistochemistry (IHC)

Immunogen

A synthesized peptide derived from human Phospho-Smad2 (Ser245)

Isotype

Rabbit IgG

Storage Buffer

Supplied in PBS containing 50% glycerol, 0.5% BSA and 0.02% sodium azide.

Storage

Store at -20 °C for one year.

Recommended Dilutions

Western Blotting (WB): 1:500-1:2,000

Immunohistochemistry-Paraffin (IHC-P): 1:50-1:300

Note: This product is for research use only.

Validation Data

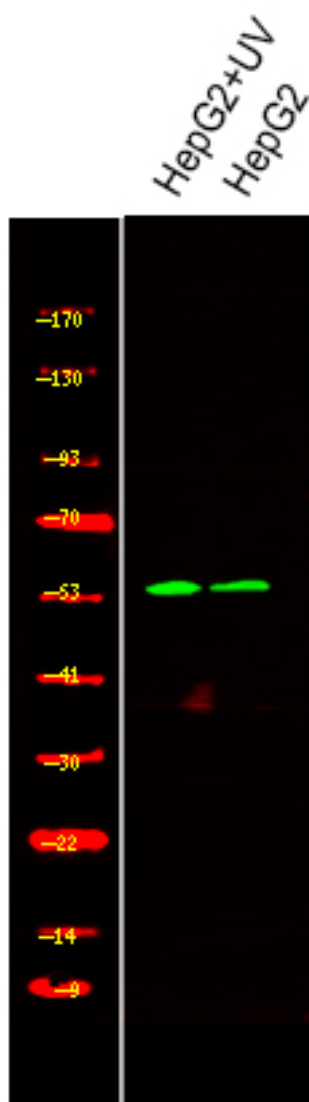
SUPPORT

SUPPORT@GENUINBIOTECH.COM
TEL: +1-540-855-7041

ORDERS

SALES@GENUINBIOTECH.COM
FAX: +1-540-855-7041

WWW.GENUINBIOTECH.COM



Western blotting analysis of various,using primary antibody at 1:1,000 dilution. Secondary antibody was diluted at 1:10,000