

# Anti-Phospho-Kinesin-like Protein KIF1C (S1092) Rabbit Polyclonal Antibody



**Catalog #: U2068**

## Aliases

Kinesin-like protein KIF1C

## Background

Gene Name: KIF1C/KIAA0706

NCBI Gene Entry: [10749](#)

UniProt Entry: [O43896](#)

## Application Information

Molecular Weight: Predicted, 123 kDa; observed, 121 kDa

Clonality: Rabbit polyclonal antibody

Species Reactivity: Human, mouse, rat

Applications Tested: Western blotting (WB), immunohistochemistry (IHC)

## Immunogen

A synthesized peptide derived from human Phospho-Kinesin-like Protein KIF1C (Ser1092)

## Isotype

Rabbit IgG

## Storage Buffer

Supplied in PBS containing 50% glycerol, 0.5% BSA and 0.02% sodium azide.

## Storage

Store at -20 °C for one year.

## Recommended Dilutions

Western Blotting (WB): 1:500-1:2,000

Immunohistochemistry-Paraffin (IHC-P): 1:50-1:300

**Note:** This product is for research use only.

## Validation Data

---

### SUPPORT

SUPPORT@GENUINBIOTECH.COM  
TEL: +1-540-855-7041

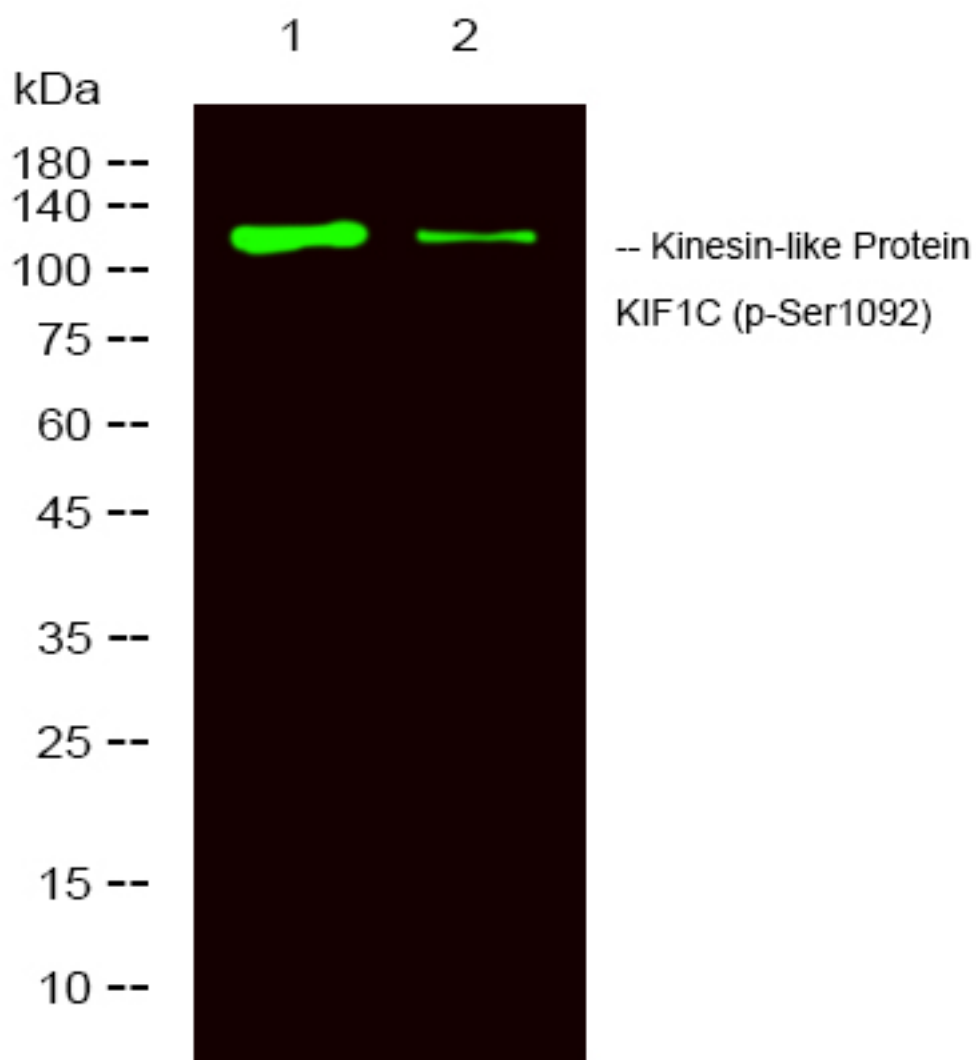
### ORDERS

SALES@GENUINBIOTECH.COM  
FAX: +1-540-855-7041

[WWW.GENUINBIOTECH.COM](http://WWW.GENUINBIOTECH.COM)

## Anti-Phospho-Kinesin-like Protein KIF1C (S1092) Rabbit Polyclonal Antibody

PAGE 2



Western blotting analysis of mouse heart , rat heart,using primary antibody at 1:1,000 dilution.  
Secondary antibody was diluted at 1:10,000

### SUPPORT

SUPPORT@GENUINBIOTECH.COM  
TEL: +1-540-855-7041

### ORDERS

SALES@GENUINBIOTECH.COM  
FAX:+1-540-855-7041

[WWW.GENUINBIOTECH.COM](http://WWW.GENUINBIOTECH.COM)