

# Anti-Phospho-NFAT2 (S172) Rabbit Polyclonal Antibody



**Catalog #: U2123**

## Aliases

Nuclear factor of activated T-cells, cytoplasmic 1 (NF-ATc1) (NFATc1) (NFAT transcription complex cytosolic component) (NF-ATc) (NFATc)

## Background

Gene Name: NFATC1/NFAT2/NFATC

NCBI Gene Entry: [4772](#)

UniProt Entry: [O95644](#)

## Application Information

Molecular Weight: Predicted, 101 kDa; observed, 101 kDa

Clonality: Rabbit polyclonal antibody

Species Reactivity: Human, mouse, rat

Applications Tested: Western blotting (WB)

## Immunogen

A synthesized peptide derived from human Phospho-NFAT2 (Ser172)

## Isotype

Rabbit IgG

## Storage Buffer

Supplied in PBS containing 50% glycerol, 0.5% BSA and 0.02% sodium azide.

## Storage

Store at -20 °C for one year.

## Recommended Dilutions

Western Blotting (WB): 1:500-1:2,000

**Note:** This product is for research use only.

## Validation Data

---

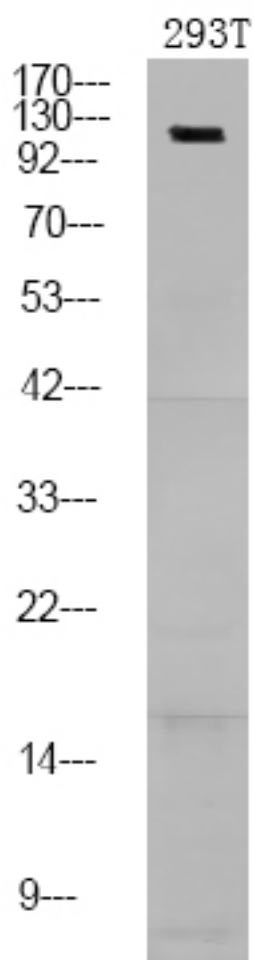
### SUPPORT

SUPPORT@GENUINBIOTECH.COM  
TEL: +1-540-855-7041

### ORDERS

SALES@GENUINBIOTECH.COM  
FAX: +1-540-855-7041

[WWW.GENUINBIOTECH.COM](http://WWW.GENUINBIOTECH.COM)



Western blotting analysis of 293T using primary antibody at 1:1,000 dilution 4°C, overnight.  
Secondary antibody was diluted at 1:10,000 25°C □ 1.5 hours