

# Anti-Phospho-FKHR (S249) Rabbit Polyclonal Antibody



**Catalog #: U2126**

## Aliases

Forkhead box protein O1 (Forkhead box protein O1A) (Forkhead in rhabdomyosarcoma)

## Background

Gene Name: FOXO1/FKHR/FOXO1A

NCBI Gene Entry: [2308](#)

UniProt Entry: [Q12778](#)

## Application Information

Molecular Weight: Predicted, 70 kDa; observed, 70 kDa

Clonality: Rabbit polyclonal antibody

Species Reactivity: Human, mouse, rat

Applications Tested: Western blotting (WB)

## Immunogen

A synthesized peptide derived from human Phospho-FKHR (Ser249)

## Isotype

Rabbit IgG

## Storage Buffer

Supplied in PBS containing 50% glycerol, 0.5% BSA and 0.02% sodium azide.

## Storage

Store at -20 °C for one year.

## Recommended Dilutions

Western Blotting (WB): 1:500-1:2,000

**Note:** This product is for research use only.

## Validation Data

---

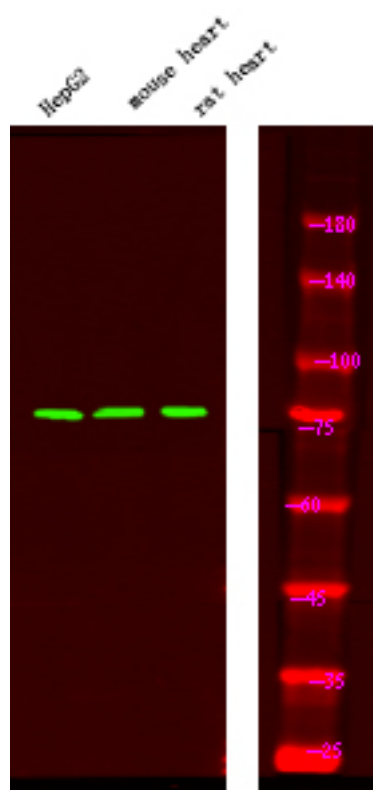
### SUPPORT

SUPPORT@GENUINBIOTECH.COM  
TEL: +1-540-855-7041

### ORDERS

SALES@GENUINBIOTECH.COM  
FAX: +1-540-855-7041

[WWW.GENUINBIOTECH.COM](http://WWW.GENUINBIOTECH.COM)



Western blotting analysis of HepG2, mouse brain tissue, rat brain tissue, using primary antibody at 1:1,000 dilution 4°C, overnight. Secondary antibody was diluted at 1:10,000 25°C 1.5hours