

Anti-Phospho-Myd88 (Y257) Rabbit Polyclonal Antibody



Catalog #: U2130

Aliases

Myeloid differentiation primary response protein MyD88

Background

Gene Name: MYD88

NCBI Gene Entry: [4615](#)

UniProt Entry: [Q99836](#)

Application Information

Molecular Weight: Predicted, 33 kDa; observed, 33 kDa

Clonality: Rabbit polyclonal antibody

Species Reactivity: Human, mouse, rat

Applications Tested: Western blotting (WB)

Immunogen

A synthesized peptide derived from human Phospho-Myd88 (Tyr257)

Isotype

Rabbit IgG

Storage Buffer

Supplied in PBS containing 50% glycerol, 0.5% BSA and 0.02% sodium azide.

Storage

Store at -20 °C for one year.

Recommended Dilutions

Western Blotting (WB): 1:500-1:2,000

Note: This product is for research use only.

Validation Data

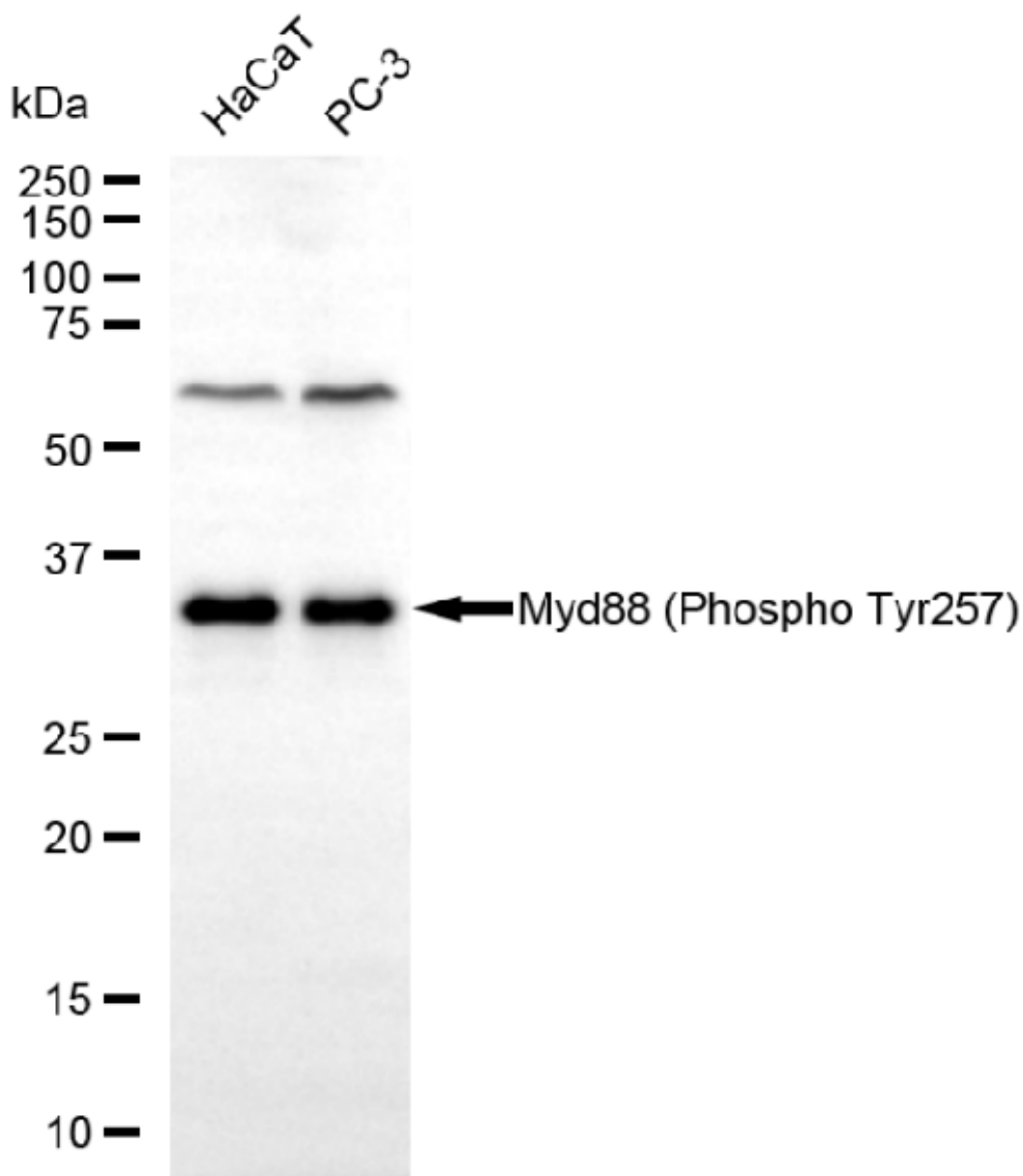
SUPPORT

SUPPORT@GENUINBIOTECH.COM
TEL: +1-540-855-7041

ORDERS

SALES@GENUINBIOTECH.COM
FAX: +1-540-855-7041

WWW.GENUINBIOTECH.COM



Copyright ©2025 Genuin Biotechnologies LLC

Western blotting analysis using anti-Phospho-Myd88 (Y257) antibody (Cat#U2130). Total lysates (30 µg) were loaded and separated by SDS-PAGE. The blot was incubated with anti-Phospho-Myd88 (Y257) antibody (Cat#U2130, 1:2,500) and HRP-conjugated goat anti-rabbit secondary antibody (Cat#201, 1:20,000) respectively. Image was developed using FeQ™ ECL Substrate Kit (Cat#226).

SUPPORT

SUPPORT@GENUINBIOTECH.COM
TEL: +1-540-855-7041

ORDERS

SALES@GENUINBIOTECH.COM
FAX: +1-540-855-7041

WWW.GENUINBIOTECH.COM