

# Anti-Phospho-EPHB4 (Y987) Rabbit Polyclonal Antibody



**Catalog #: U2137**

## Aliases

Ephrin type-B receptor 4 (EC 2.7.10.1) (Hepatoma transmembrane kinase) (Tyrosine-protein kinase TYRO11)

## Background

Gene Name: EPHB4/HTK/MYK1/TYRO11

NCBI Gene Entry: [2050](#)

UniProt Entry: [P54760](#)

## Application Information

Molecular Weight: Predicted, 108 kDa; observed, 110 kDa

Clonality: Rabbit polyclonal antibody

Species Reactivity: Human, mouse, rat

Applications Tested: Western blotting (WB)

## Immunogen

A synthesized peptide derived from human Phospho-EPHB4 (Tyr987)

## Isotype

Rabbit IgG

## Storage Buffer

Supplied in PBS containing 50% glycerol, 0.5% BSA and 0.02% sodium azide.

## Storage

Store at -20 °C for one year.

## Recommended Dilutions

Western Blotting (WB): 1:500-1:2,000

**Note:** This product is for research use only.

## Validation Data

---

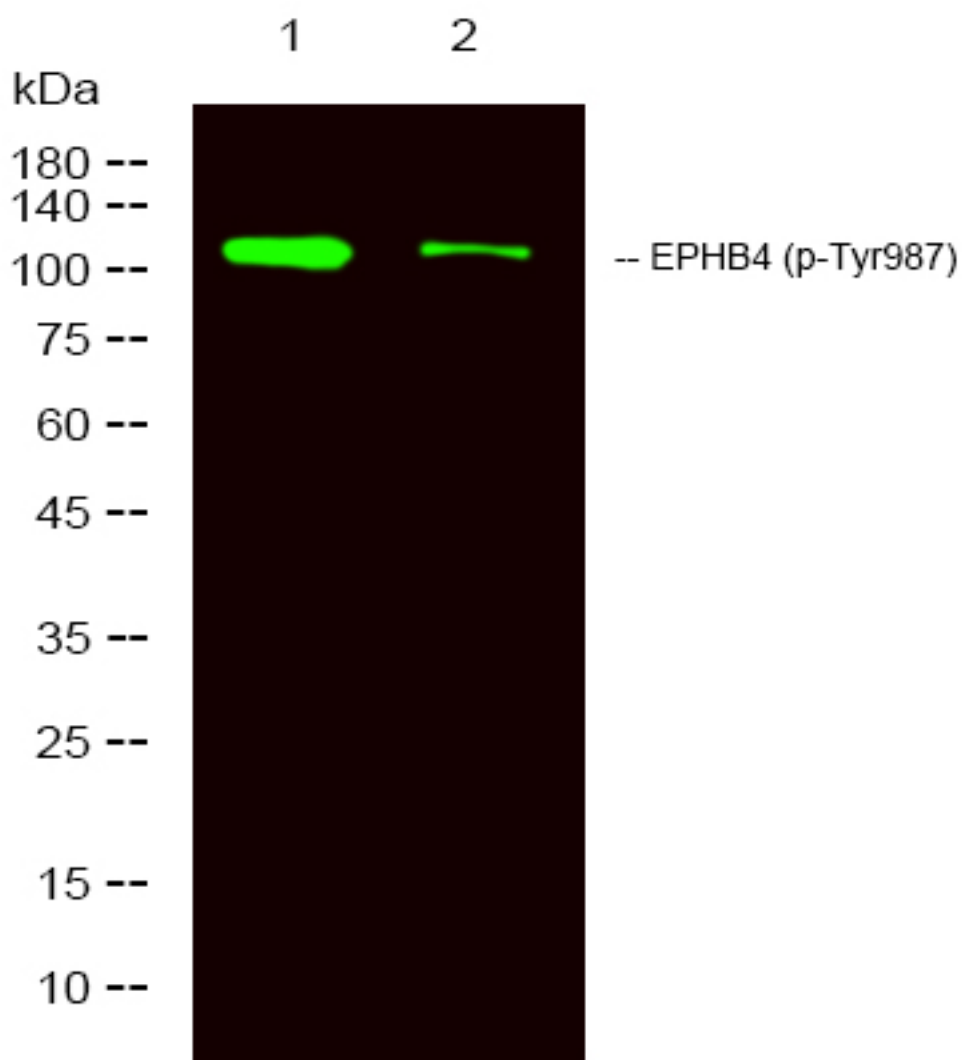
### SUPPORT

SUPPORT@GENUINBIOTECH.COM  
TEL: +1-540-855-7041

### ORDERS

SALES@GENUINBIOTECH.COM  
FAX: +1-540-855-7041

[WWW.GENUINBIOTECH.COM](http://WWW.GENUINBIOTECH.COM)



Western blotting analysis of 1 HeLa treated with LPS, 2 HeLa, using primary antibody at 1:1,000 dilution. Secondary antibody was diluted at 1:10,000