

Anti-Phospho-ROR1 (Y786) Rabbit Polyclonal Antibody



Catalog #: U2146

Aliases

Tyrosine-protein kinase transmembrane receptor ROR1 (EC 2.7.10.1) (Neurotrophic tyrosine kinase, receptor-related 1)

Background

Gene Name: ROR1/NTRKR1

NCBI Gene Entry: [4919](#)

UniProt Entry: [Q01973](#)

Application Information

Molecular Weight: Predicted, 104 kDa; observed, 105 kDa

Clonality: Rabbit polyclonal antibody

Species Reactivity: Human, mouse, rat

Applications Tested: Western blotting (WB)

Immunogen

A synthesized peptide derived from human Phospho-ROR1 (Tyr786)

Isotype

Rabbit IgG

Storage Buffer

Supplied in PBS containing 50% glycerol, 0.5% BSA and 0.02% sodium azide.

Storage

Store at -20 °C for one year.

Recommended Dilutions

Western Blotting (WB): 1:500-1:2,000

Note: This product is for research use only.

Validation Data

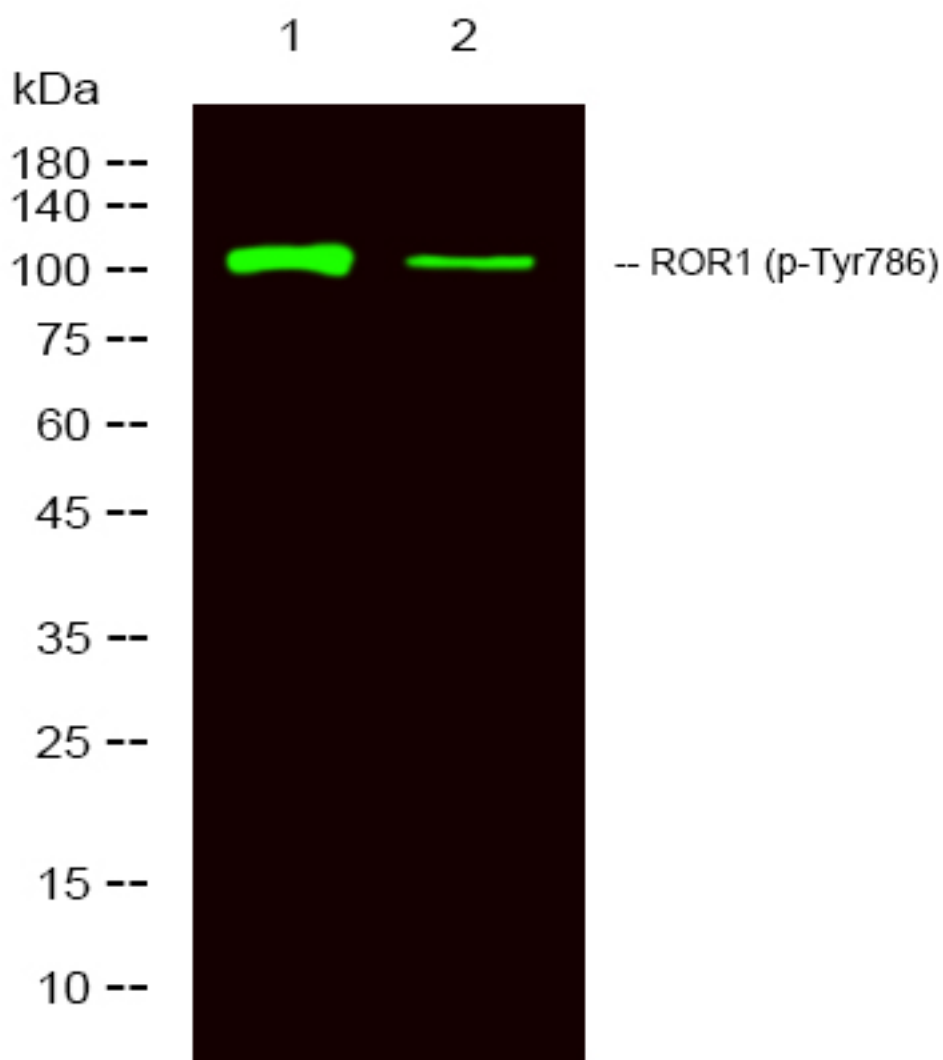
SUPPORT

SUPPORT@GENUINBIOTECH.COM
TEL: +1-540-855-7041

ORDERS

SALES@GENUINBIOTECH.COM
FAX: +1-540-855-7041

WWW.GENUINBIOTECH.COM



Western blotting analysis of 1 HeLa, 2 treated with LPS 100ng/mL 20min, using primary antibody at 1:1,000 dilution. Secondary antibody was diluted at 1:10,000