

Anti-Phospho-CDK5 (S159) Rabbit Polyclonal Antibody



Catalog #: U2148

Aliases

Cyclin-dependent kinase 5 (EC 2.7.11.22) (Cell division protein kinase 5) (Serine/threonine-protein kinase PSSALRE) (Tau protein kinase II catalytic subunit) (TPKII catalytic subunit)

Background

Gene Name: CDK5/CDKN5

NCBI Gene Entry: [1020](#)

UniProt Entry: [Q00535](#)

Application Information

Molecular Weight: Predicted, 33 kDa; observed, 33 kDa

Clonality: Rabbit polyclonal antibody

Species Reactivity: Human, mouse, rat

Applications Tested: Western blotting (WB)

Immunogen

A synthesized peptide derived from human Phospho-CDK5 (Ser159)

Isotype

Rabbit IgG

Storage Buffer

Supplied in PBS containing 50% glycerol, 0.5% BSA and 0.02% sodium azide.

Storage

Store at -20 °C for one year.

Recommended Dilutions

Western Blotting (WB): 1:500-1:2,000

Note: This product is for research use only.

Validation Data

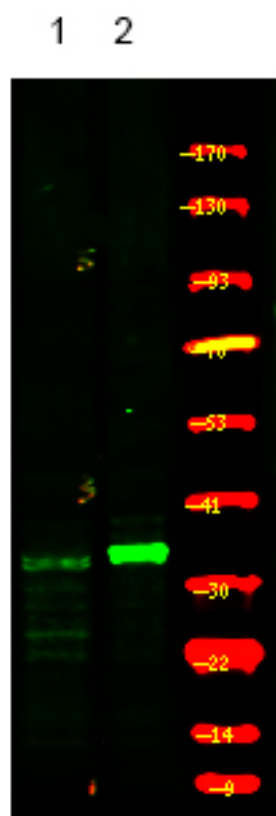
SUPPORT

SUPPORT@GENUINBIOTECH.COM
TEL: +1-540-855-7041

ORDERS

SALES@GENUINBIOTECH.COM
FAX: +1-540-855-7041

WWW.GENUINBIOTECH.COM



Western blotting analysis of mouse lung tissue ,using primary antibody at 1:1,000 dilution. Secondary antibody was diluted at 1:10,000