

# Anti-Phospho-TGFBR2 (Y284) Rabbit Polyclonal Antibody



**Catalog #: U2150**

## Aliases

TGF-beta receptor type-2 (TGFR-2) (EC 2.7.11.30) (TGF-beta type II receptor) (Transforming growth factor-beta receptor type II) (TGF-beta receptor type II) (TbetaR-II)

## Background

Gene Name: TGFBR2

NCBI Gene Entry: [7048](#)

UniProt Entry: [P37173](#)

## Application Information

Molecular Weight: Predicted, 65 kDa; observed, 75 kDa

Clonality: Rabbit polyclonal antibody

Species Reactivity: Human, mouse, rat

Applications Tested: Western blotting (WB)

## Immunogen

A synthesized peptide derived from human Phospho-TGFBR2 (Tyr284)

## Isotype

Rabbit IgG

## Storage Buffer

Supplied in PBS containing 50% glycerol, 0.5% BSA and 0.02% sodium azide.

## Storage

Store at -20 °C for one year.

## Recommended Dilutions

Western Blotting (WB): 1:500-1:2,500

**Note:** This product is for research use only.

## Validation Data

---

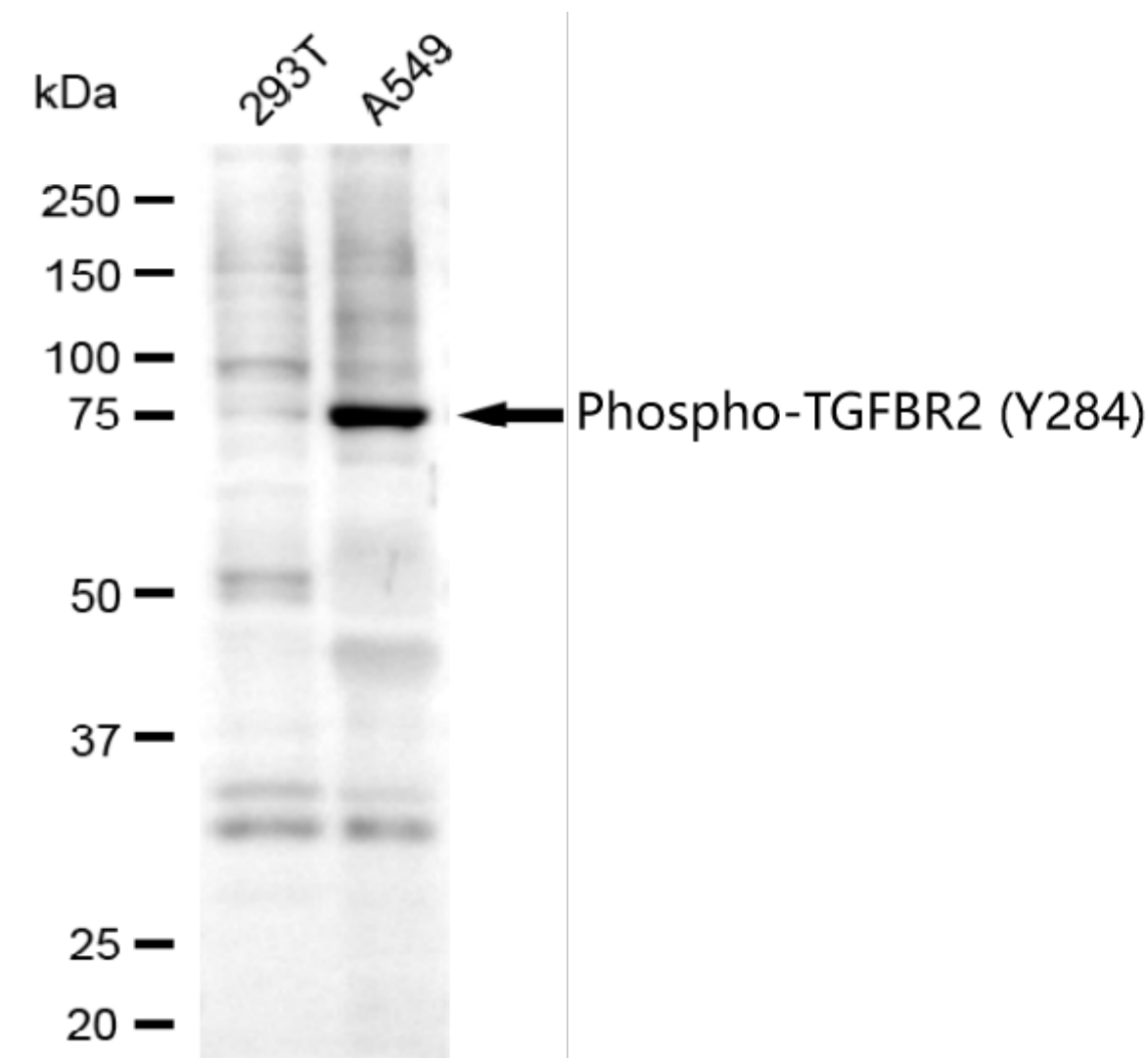
### SUPPORT

SUPPORT@GENUINBIOTECH.COM  
TEL: +1-540-855-7041

### ORDERS

SALES@GENUINBIOTECH.COM  
FAX: +1-540-855-7041

[WWW.GENUINBIOTECH.COM](http://WWW.GENUINBIOTECH.COM)



Copyright ©2025 Genuin Biotechnologies LLC

Western blotting analysis using anti-Phospho-TGFBR2 (Y284) antibody (Cat#U2150). Total lysates (30  $\mu$ g) were loaded and separated by SDS-PAGE. The blot was incubated with anti-Phospho-TGFBR2 (Y284) antibody (Cat#U2150, 1:2,500) and HRP-conjugated goat anti-rabbit secondary antibody (Cat#201, 1:20,000) respectively. Image was developed using FeQ™ ECL Substrate Kit (Cat#226).