

Anti-Phospho-S100A9 (T113) Rabbit Polyclonal Antibody



Catalog #: U2151

Aliases

Protein S100-A9 (Calgranulin-B) (Calprotectin L1H subunit) (Leukocyte L1 complex heavy chain) (Migration inhibitory factor-related protein 14) (MRP-14) (p14) (S100 calcium-binding protein A9)

Background

Gene Name: S100A9/CAGB/CFAG/MRP14

NCBI Gene Entry: [6280](#)

UniProt Entry: [P06702](#)

Application Information

Molecular Weight: Predicted, 13 kDa; observed, 13 kDa

Clonality: Rabbit polyclonal antibody

Species Reactivity: Human, mouse, rat

Applications Tested: Western blotting (WB)

Immunogen

A synthesized peptide derived from human Phospho-S100A9 (Thr113)

Isotype

Rabbit IgG

Storage Buffer

Supplied in PBS containing 50% glycerol, 0.5% BSA and 0.02% sodium azide.

Storage

Store at -20 °C for one year.

Recommended Dilutions

Western Blotting (WB): 1:500-1:2,000

Note: This product is for research use only.

Validation Data

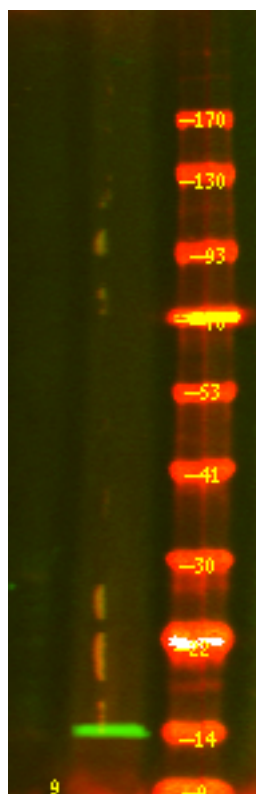
SUPPORT

SUPPORT@GENUINBIOTECH.COM
TEL: +1-540-855-7041

ORDERS

SALES@GENUINBIOTECH.COM
FAX: +1-540-855-7041

WWW.GENUINBIOTECH.COM



Western blotting analysis of 1 A549 cell, 2 LPS 100ng/mL 30min treated ,using primary antibody at 1:1,000 dilution. Secondary antibody was diluted at 1:10,000