

# Anti-Phospho-ILK-1 (S343) Rabbit Polyclonal Antibody



**Catalog #: U2154**

## Aliases

Integrin-linked protein kinase (EC 2.7.11.1) (59 kDa serine/threonine-protein kinase) (ILK-1) (ILK-2) (p59ILK)

## Background

Gene Name: ILK/ILK1/ILK2

NCBI Gene Entry: [3611](#)

UniProt Entry: [Q13418](#)

## Application Information

Molecular Weight: Predicted, 51 kDa; observed, 51 kDa

Clonality: Rabbit polyclonal antibody

Species Reactivity: Human, mouse, rat

Applications Tested: Western blotting (WB)

## Immunogen

A synthesized peptide derived from human Phospho-ILK-1 (Ser343)

## Isotype

Rabbit IgG

## Storage Buffer

Supplied in PBS containing 50% glycerol, 0.5% BSA and 0.02% sodium azide.

## Storage

Store at -20 °C for one year.

## Recommended Dilutions

Western Blotting (WB): 1:500-1:2,000

**Note:** This product is for research use only.

## Validation Data

---

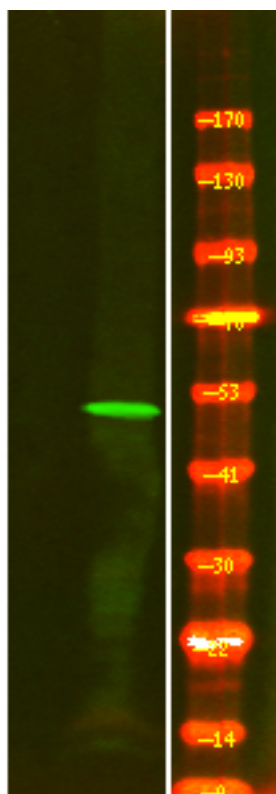
### SUPPORT

SUPPORT@GENUINBIOTECH.COM  
TEL: +1-540-855-7041

### ORDERS

SALES@GENUINBIOTECH.COM  
FAX: +1-540-855-7041

[WWW.GENUINBIOTECH.COM](http://WWW.GENUINBIOTECH.COM)



Western blotting analysis of 1 HEK-293 cell, 2 Serum-free treated ,using primary antibody at 1:1,000 dilution. Secondary antibody was diluted at 1:10,000