

Anti-Phospho-MAP3K2 (S520) Rabbit Polyclonal Antibody



Catalog #: U2155

Aliases

Mitogen-activated protein kinase kinase kinase 2 (EC 2.7.11.25) (MAPK/ERK kinase kinase 2) (MEK kinase 2) (MEKK 2)

Background

Gene Name: MAP3K2/MAPKKK2/MEKK2

NCBI Gene Entry: [10746](#)

UniProt Entry: [Q9Y2U5](#)

Application Information

Molecular Weight: Predicted, 70 kDa; observed, 70 kDa

Clonality: Rabbit polyclonal antibody

Species Reactivity: Human, mouse, rat

Applications Tested: Western blotting (WB)

Immunogen

A synthesized peptide derived from human Phospho-MAP3K2 (Ser520)

Isotype

Rabbit IgG

Storage Buffer

Supplied in PBS containing 50% glycerol, 0.5% BSA and 0.02% sodium azide.

Storage

Store at -20 °C for one year.

Recommended Dilutions

Western Blotting (WB): 1:500-1:2,000

Note: This product is for research use only.

Validation Data

SUPPORT

SUPPORT@GENUINBIOTECH.COM
TEL: +1-540-855-7041

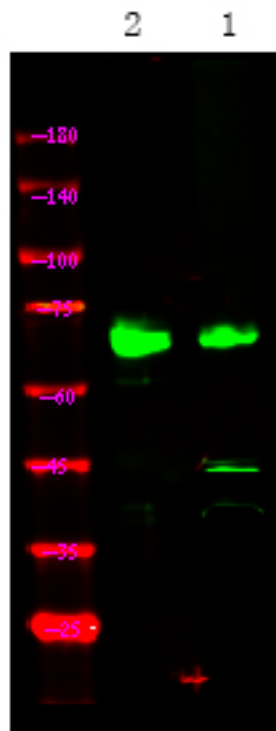
ORDERS

SALES@GENUINBIOTECH.COM
FAX: +1-540-855-7041

WWW.GENUINBIOTECH.COM

Anti-Phospho-MAP3K2 (S520) Rabbit Polyclonal Antibody

PAGE 2



Western blotting analysis of mouse liver ,using primary antibody at 1:1,000 dilution. Secondary antibody was diluted at 1:10,000

SUPPORT

SUPPORT@GENUINBIOTECH.COM
TEL: +1-540-855-7041

ORDERS

SALES@GENUINBIOTECH.COM
FAX: +1-540-855-7041

WWW.GENUINBIOTECH.COM