

# Anti-Phospho-eNOS (S633) Rabbit Polyclonal Antibody



**Catalog #: U2156**

## Aliases

Nitric oxide synthase, endothelial (EC 1.14.13.39) (Constitutive NOS) (cNOS) (EC-NOS) (Endothelial NOS) (eNOS) (NOS type III) (NOSIII)

## Background

Gene Name: NOS3

NCBI Gene Entry: [4846](#)

UniProt Entry: [P29474](#)

## Application Information

Molecular Weight: Predicted, 133 kDa; observed, 133 kDa

Clonality: Rabbit polyclonal antibody

Species Reactivity: Human, mouse, rat

Applications Tested: Western blotting (WB)

## Immunogen

A synthesized peptide derived from human Phospho-eNOS (Ser633)

## Isotype

Rabbit IgG

## Storage Buffer

Supplied in PBS containing 50% glycerol, 0.5% BSA and 0.02% sodium azide.

## Storage

Store at -20 °C for one year.

## Recommended Dilutions

Western Blotting (WB): 1:500-1:2,000

**Note:** This product is for research use only.

## Validation Data

---

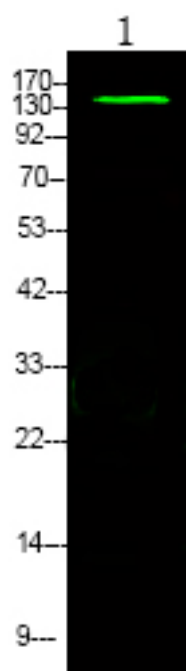
### SUPPORT

SUPPORT@GENUINBIOTECH.COM  
TEL: +1-540-855-7041

### ORDERS

SALES@GENUINBIOTECH.COM  
FAX: +1-540-855-7041

[WWW.GENUINBIOTECH.COM](http://WWW.GENUINBIOTECH.COM)



Western blotting analysis of mouse heart ,using primary antibody at 1:1,000 dilution.  
Secondary antibody was diluted at 1:10,000